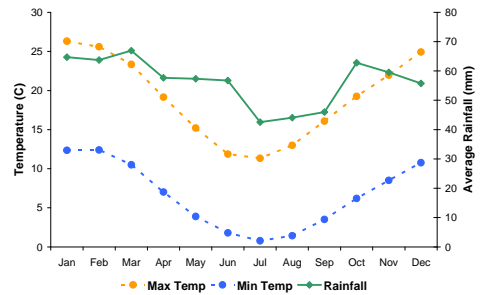


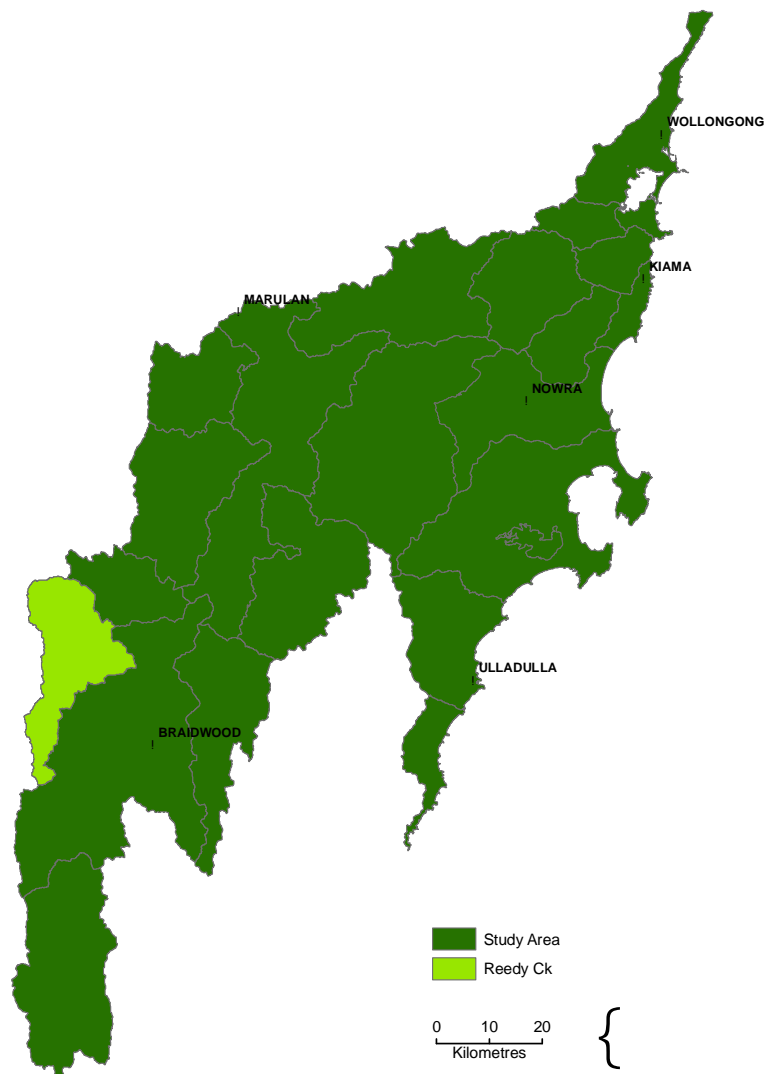
Report Card - Reedy Creek

General Information

<i>Sub-catchment size</i>	371 km ²
<i>Riparian landscape area</i>	14 km ²
<i>Average annual rainfall range</i>	680 – 1160 mm
<i>Median annual rainfall</i>	730 mm
<i>Elevation range</i>	570 – 1340 m
<i>Sub-catchment stream length</i>	1234 km
<i>Analysis area stream length</i>	896 km

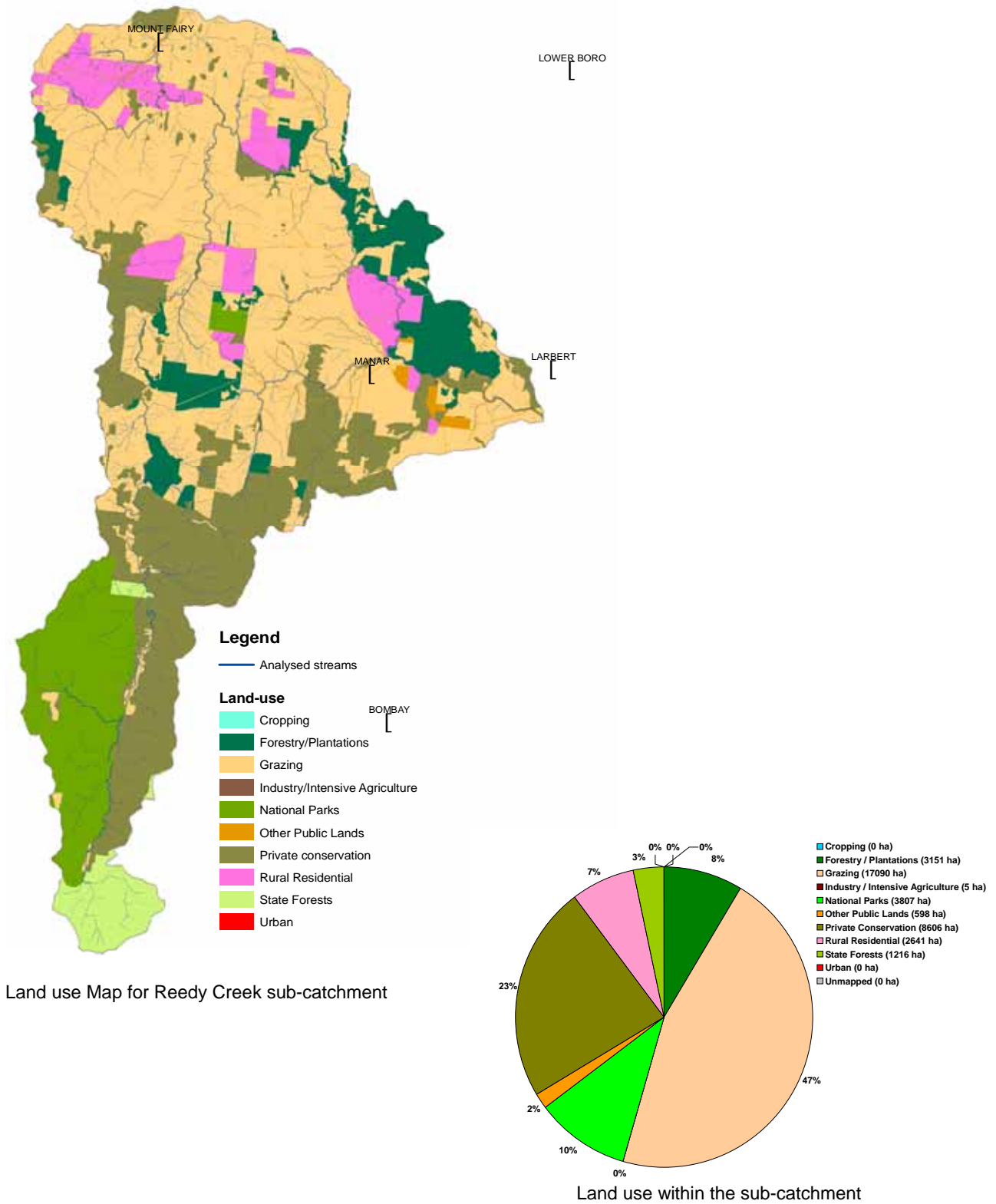


Average daily temperature and monthly rainfall data



Location of Reedy Creek sub-catchment within study area

Land Use

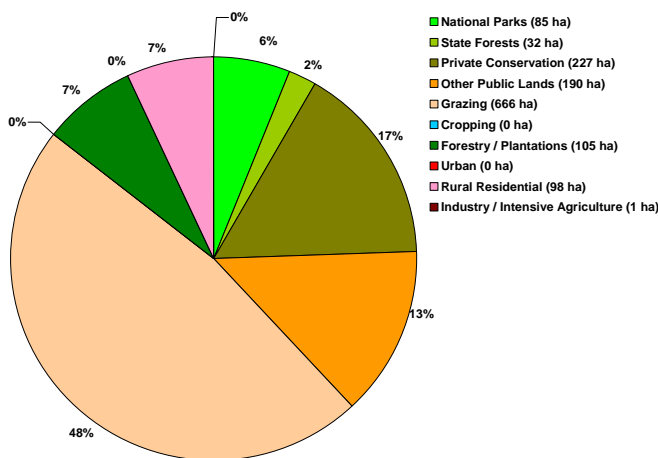


Land use Map for Reedy Creek sub-catchment

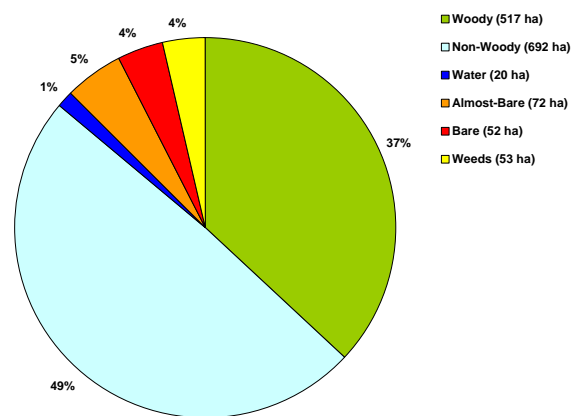
Report Card

Reedy Creek Riparian Zone Summary

- Grazing comprises the largest area within the sub-catchment and the riparian zone.
- Woody riparian cover composes approximately 37% of the riparian area. About 20% of the Woody cover is within National Parks and/or State Forests.
- About 90% of the weeds occur in Public (Other Conservation) and Grazing (Agriculture) land use categories.
- National Parks and State Forests have minimal areas of bare, almost bare and weeds.
- Grazing, followed by rural residential, have the lowest amount of woody vegetation on a per hectare basis.



Land use within the riparian zone



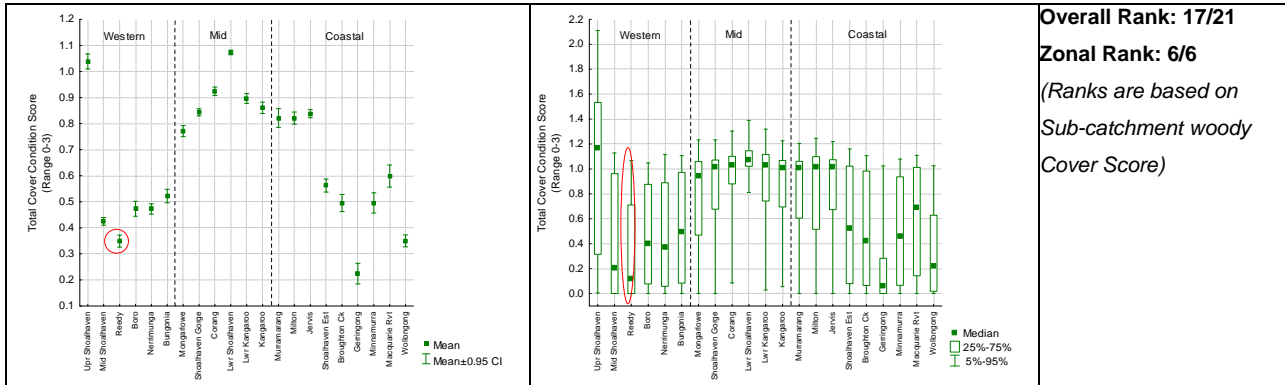
Land cover classes within the riparian zone.

Cover class by land use within the riparian zone

Cover Class	Landuse	Conservation		Other Conservation		Agriculture			Other		
		National Parks	State Forests	Private Conservation	Other Public Lands	Grazing	Cropping	Forestry / Plantations	Urban	Rural Residential	Industry / Intensive Agriculture
Woody	Area (ha)	74.3	30.6	159.1	56.4	103.7	0.0	69.2	0.0	23.8	0.1
	% of Cover Class	14.4%	5.9%	30.8%	10.9%	20.1%	0.0%	13.4%	0.0%	4.6%	0.0%
Non-Woody	Area (ha)	10.9	1.3	51.3	72.3	465.8	0.0	29.0	0.0	60.3	0.6
	% of Cover Class	1.6%	0.2%	7.4%	10.5%	67.4%	0.0%	4.2%	0.0%	8.7%	0.1%
Water	Area (ha)	0.1	0.0	1.4	7.6	7.3	0.0	1.5	0.0	1.5	0.1
	% of Cover Class	0.4%	0.2%	7.1%	38.9%	37.6%	0.0%	7.6%	0.0%	7.7%	0.5%
Almost Bare	Area (ha)	0.0	0.0	6.4	13.6	44.7	0.0	1.7	0.0	5.1	0.1
	% of Cover Class	0.0%	0.0%	9.0%	19.0%	62.5%	0.0%	2.4%	0.0%	7.1%	0.1%
Bare	Area (ha)	0.0	0.0	4.8	18.2	23.7	0.0	1.9	0.0	3.5	0.0
	% of Cover Class	0.1%	0.0%	9.1%	34.8%	45.5%	0.0%	3.7%	0.0%	6.8%	0.0%
Weeds	Area (ha)	0.0	0.0	4.0	21.6	21.2	0.0	1.4	0.0	4.2	0.1
	% of Cover Class	0.0%	0.0%	7.7%	41.1%	40.3%	0.0%	2.7%	0.0%	8.1%	0.2%

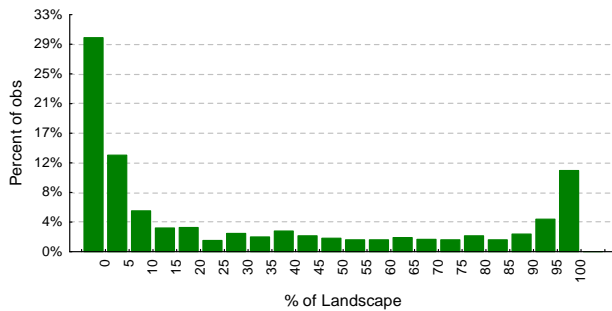
Report Card - Woody cover

Reedy Creek - Woody vegetation

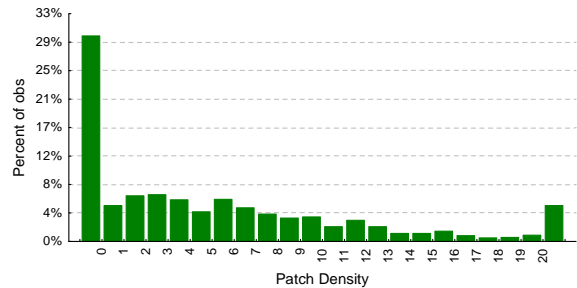


Comparison of mean median woody cover scores across study area

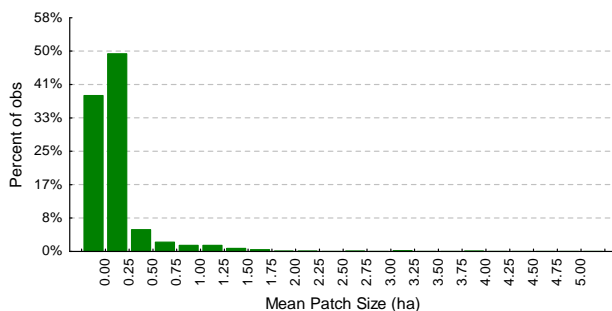
- The riparian zone in approximately 29% of the sub-catchment tiles, where woody vegetation cover is present, consists of between 50 and 100% woody cover, i.e. woody cover is very dominant in the riparian zones of these tiles. Woody riparian cover is much less dominant in 53% of the sub-catchment tiles, where it constitutes of 20% or less of the riparian area within a tile.
- The Patch Density shows generally low values indicating the general intactness of the woody cover where it exists.
- The Mean Patch Size graph shows that the woody riparian cover in this sub-catchment is generally grainy.



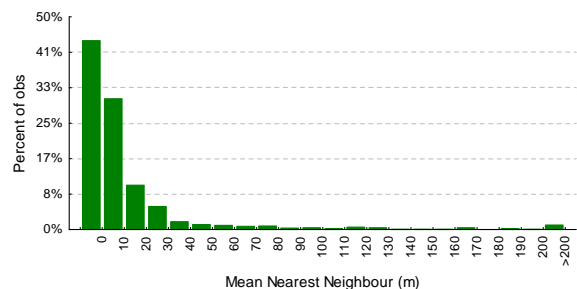
Distribution of the percentage of woody vegetation or **Percent of Landscape (PL)** within tiles in the riparian zones of the sub-catchment.



Distribution of the woody vegetation Patch Density (ha) within tiles in the riparian zones.



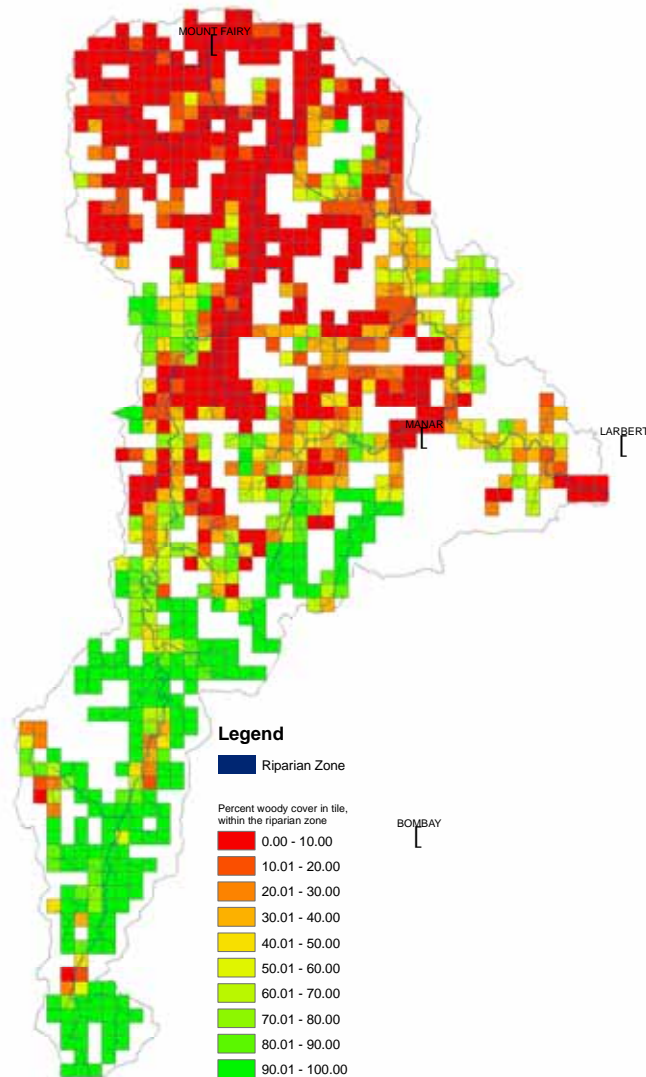
Distribution of mean patch size (ha) of woody vegetation in the riparian zones.



Distribution of the Mean Nearest Neighbour (Metres) distance between woody vegetation patches within tiles in the riparian zones.

Report Card - **Woody cover**

Reedy Creek – Woody Vegetation



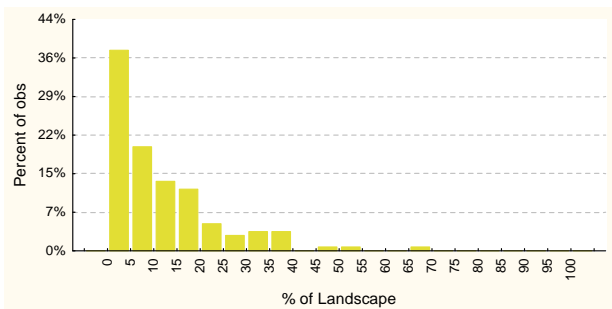
Woody cover map of Reedy Creek sub-catchment

- Most of the *woody* riparian vegetation is found in the southern upper reaches of the sub-catchment where the predominant land-uses include National Parks, State Forest and Private Native Forestry.
- The *woody* vegetation in the northern and lower reaches of the creek is fragmented and very sparse to absent. Grazing is the predominant land use.

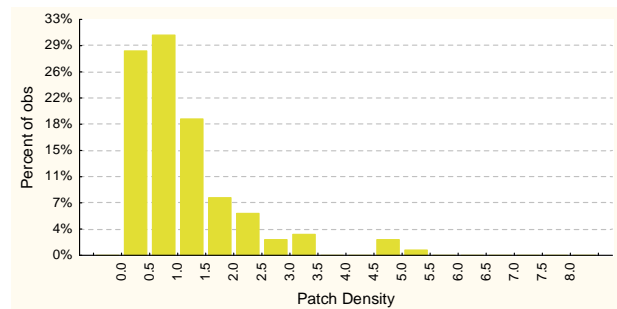
Report Card - Weeds (Willows)

Reedy Creek – Weeds (Willows)

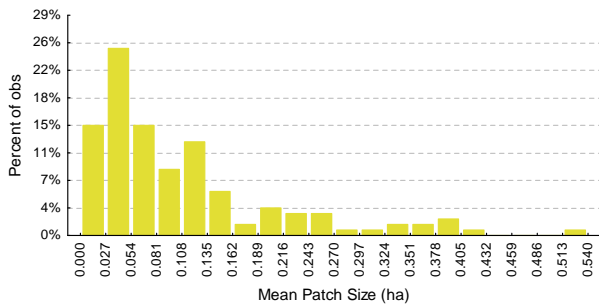
- The **% of Landscape** graph indicates that weeds generally do not dominate the riparian zone in the sub-catchment. In approximately 37% of the tiles where the weeds (mostly Willows) exist, they occupy 5% or less of the riparian zone.
- Weeds generally exist in relatively small patch sizes as indicated by the Mean Patch Size graph.



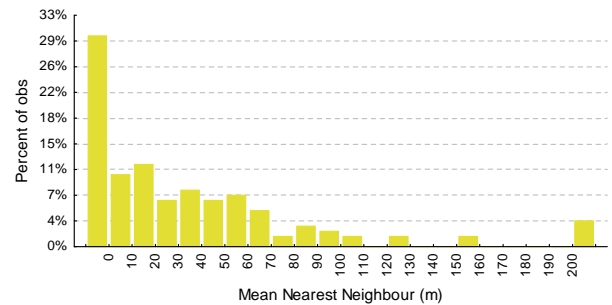
Distribution of the percentage of Weeds or **Percent of Landscape (PL)** within tiles in the riparian zone.



Distribution of the Weeds Patch Density (PD) within tiles in the riparian zones.



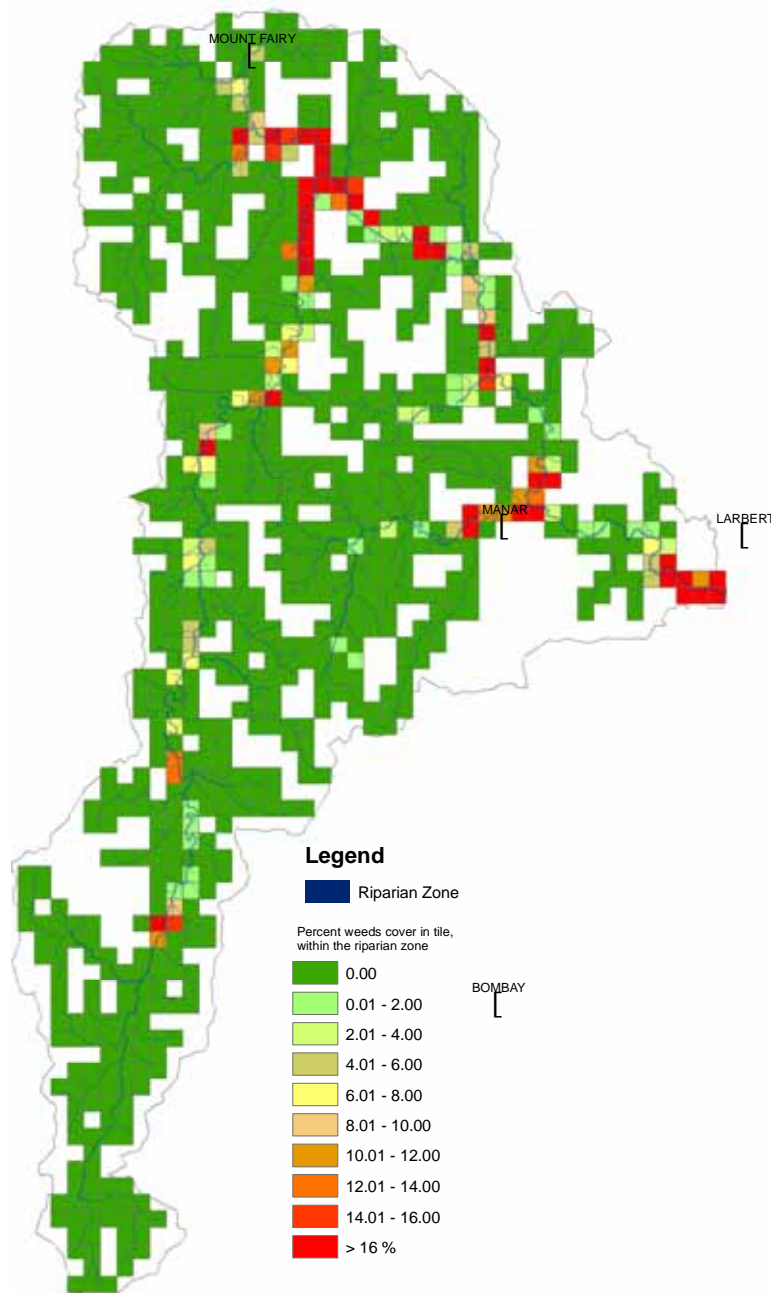
Distribution of mean patch size (ha) of weeds in the riparian zones.



Distribution of the Mean Nearest Neighbour (Metres) distance between Weeds patches within tiles in the riparian zones.

Report Card - Weeds (Willows)

Reedy Creek – Weeds (Willows)

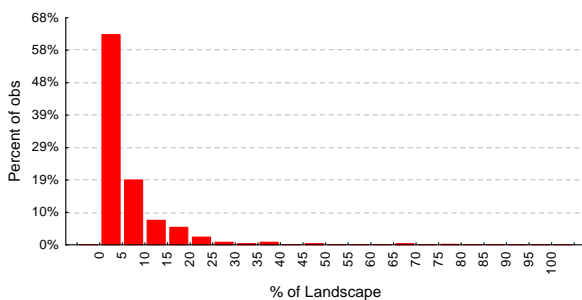


Weeds map of Reedy Creek sub-catchment

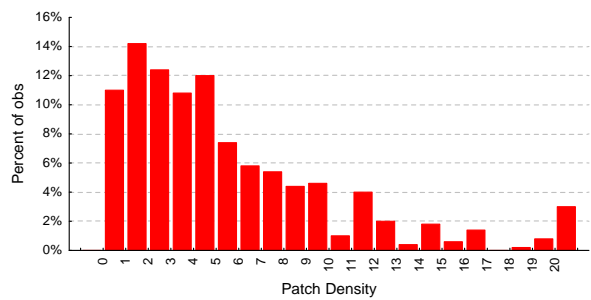
- Weeds (mainly Willows) are widely distributed in the sub-catchment but exist primarily along the main trunk streams. Small but significant patches of willows occur in generally intact upper reaches of the sub-catchment.
- The largest and contiguous weed (willows) patches appear to be concentrated towards the upper northern part of the sub-catchment and the lower parts of the sub-catchment, where grazing is the predominant land use.
- Weeds (willows) are present in at least approximately 14% of the sub-catchment tiles.

Reedy Creek – Bare

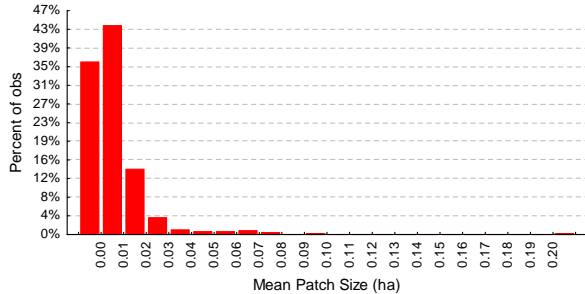
- The **% of Landscape** graphs shows that Bare areas generally do not dominate the riparian area in this sub-catchment. Where the Bare areas are present within tiles, they occupy 5% or less of the riparian zone in approximately 64% of the tiles.
- The relatively large values of the Patch Density graph indicate frequent occurrence of the Bare patches within the sub-catchment
- Bare areas are generally small as indicated by the Mean Patch Size graph.



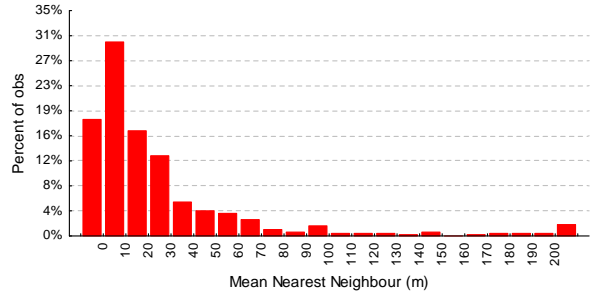
Distribution of the percentage of Bare area or **Percent of Landscape (PL)** within tiles in the riparian zones.



Distribution of the *Bare* Patch Density (PD) within tiles in the riparian zones.

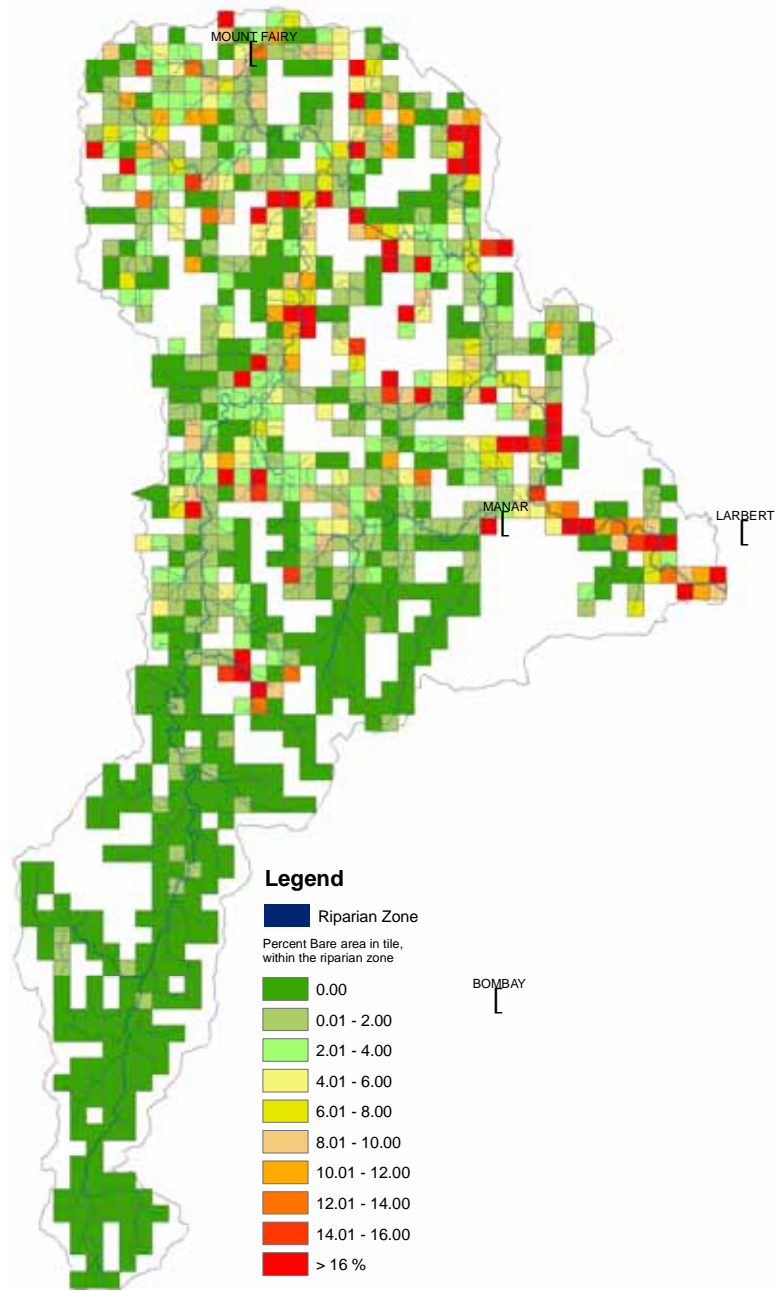


Distribution of mean patch size of *Bare* areas in the riparian zones.



Distribution of the Mean Nearest Neighbour (MNN) distance between *Bare* patches within tiles in the riparian zones.

Reedy Creek – Bare



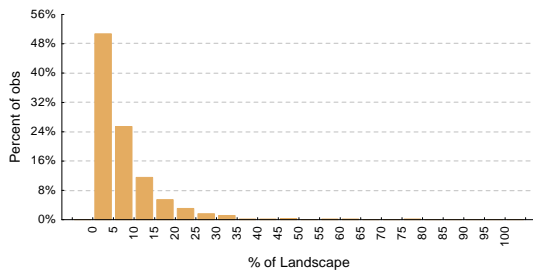
Bare map of Reedy Creek sub-catchment

- Riparian zones with the highest proportion of *Bare* areas within the landscape tile area are widely distributed and concentrated in the northern and lower reaches of the sub-catchment where grazing is the main land use.
- *Bare* areas exist in about 54% of the sub-catchment tiles.

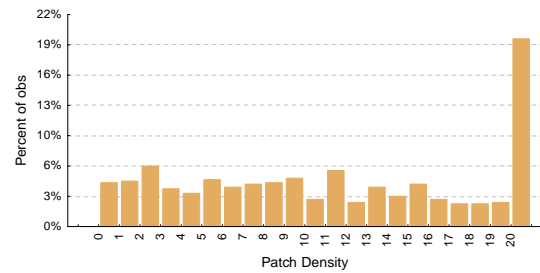
Report Card - Almost Bare

Reedy Creek – Almost Bare

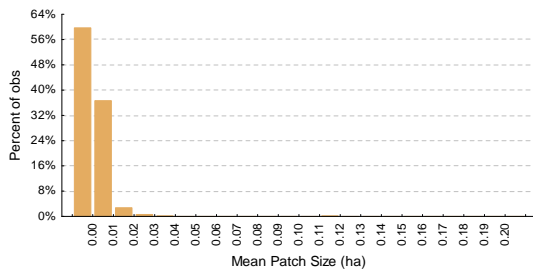
- Where they exist, the Almost Bare areas generally do not dominate the riparian area in this sub-catchment as indicated by the **% of Landscape** graph.
- The relatively large values of the Patch Density graph indicate frequent occurrence of the Almost Bare patches within the sub-catchment.
- Almost Bare areas are generally small as indicated by the Mean Patch Size graph.



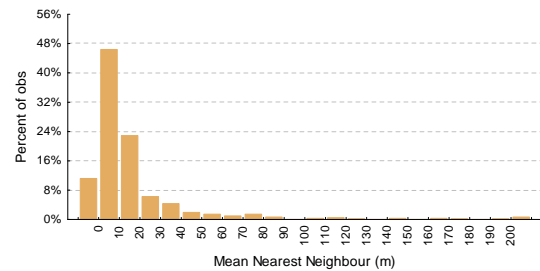
Distribution of the percentage of *Almost bare* area or **Percent of Landscape (PL)** within tiles in the riparian zones.



Distribution of the *Almost Bare* Patch Density (Ha) within tiles in the riparian zones.



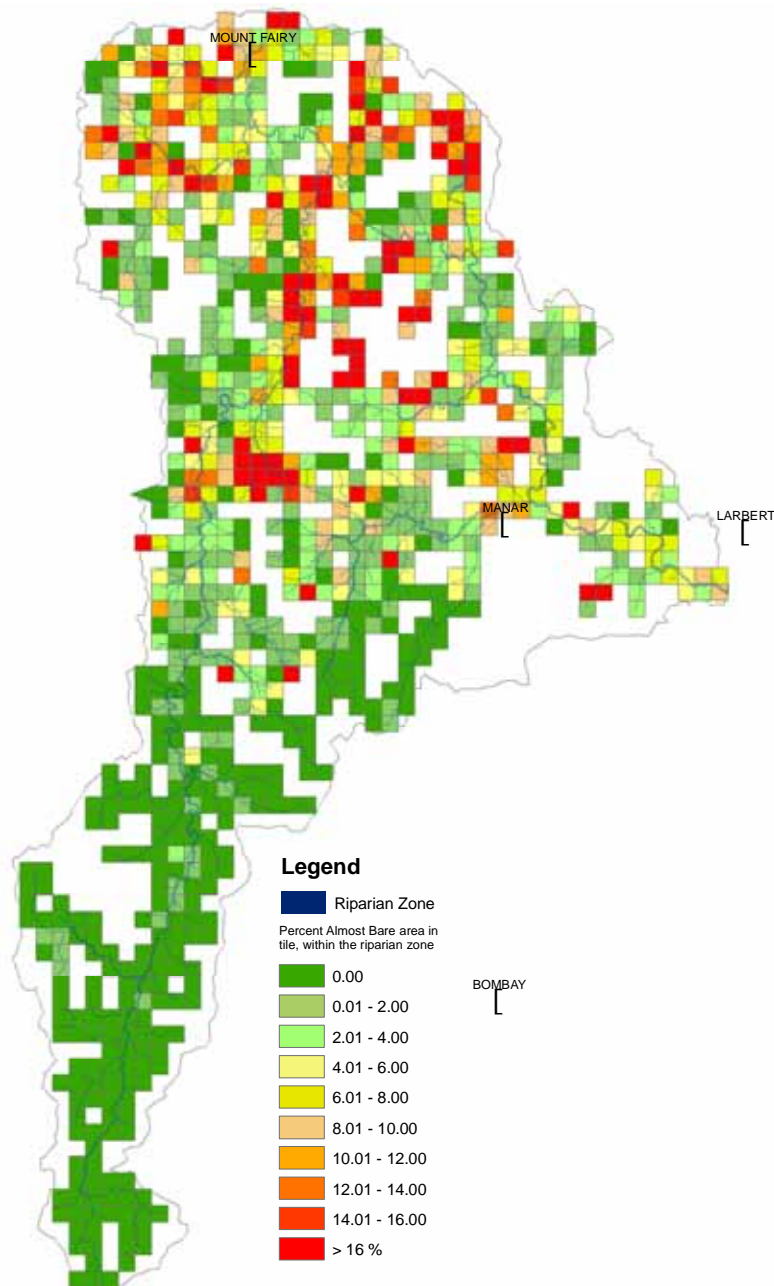
Distribution of mean patch size (Ha) of *Almost Bare* areas in the riparian zones.



Distribution of the Mean Nearest Neighbour (metres) distance between *Almost Bare* patches within tiles in the riparian zones.

Report Card - Almost Bare

Reedy Creek – Almost Bare



Almost Bare map of Reedy Creek sub-catchment

- Riparian zones with the highest proportion of *Almost Bare* areas within the landscape tile area are widely distributed and concentrated in the northern and lower reaches of the of the sub-catchment where grazing is the main land use.
- *Almost Bare* areas exist in approximately 65% of the sub-catchment tiles.