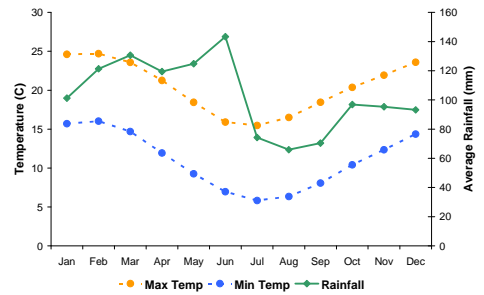


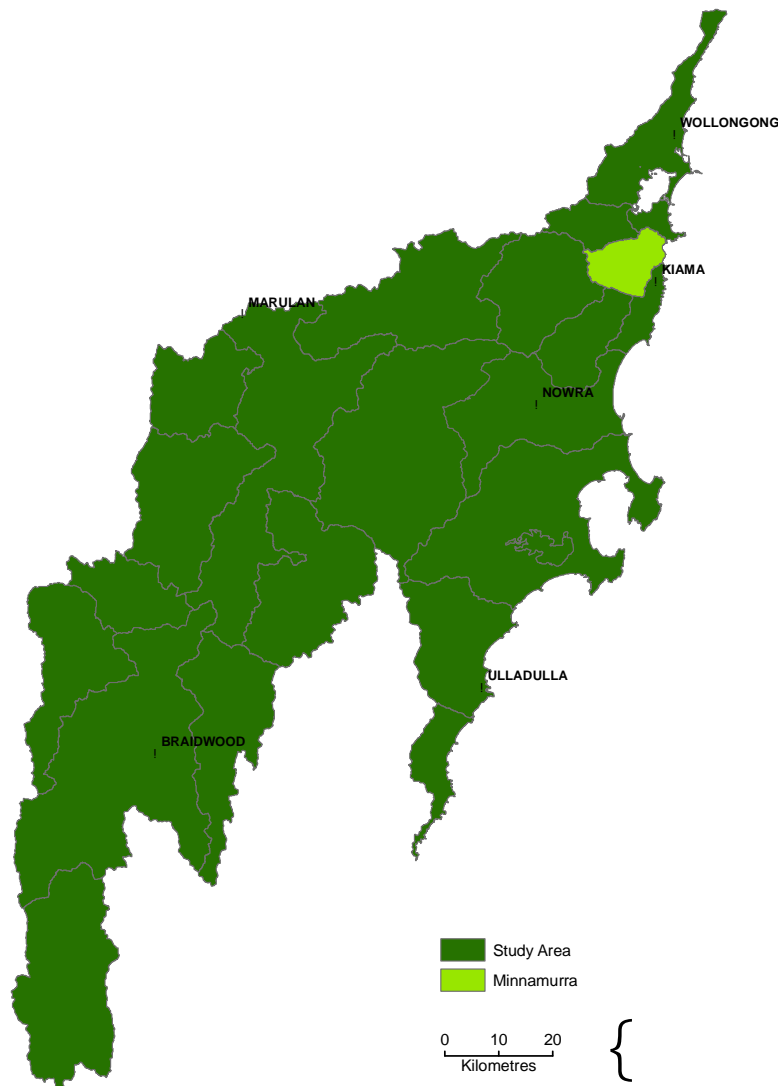
Report Card - Minnamurra

General Information

Sub-catchment size	121 km ²
Riparian landscape area	6 km ²
Average annual rainfall range	1220-2020 mm
Median annual rainfall	1450 mm
Elevation range	2-773 m
Sub-catchment stream length	411 km
Analysis area stream length	284 km



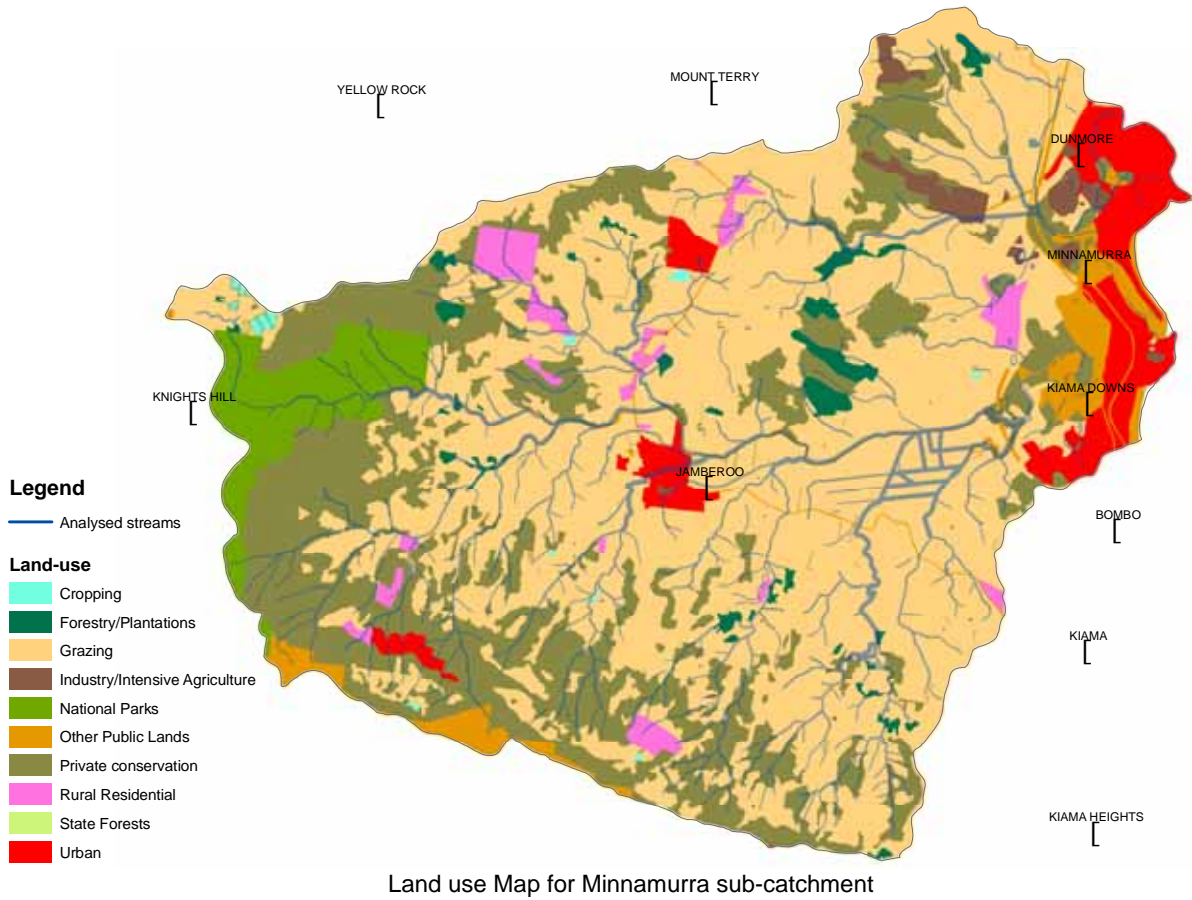
Average daily temperature and monthly rainfall data



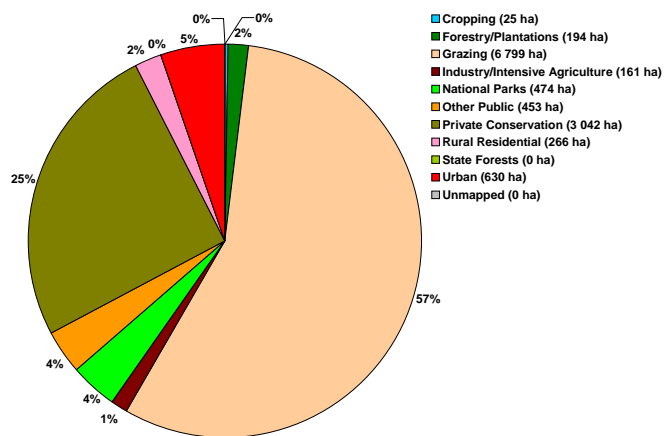
Location of Minnamurra sub-catchment within study area

Report Card

Land Use



Land use Map for Minnamurra sub-catchment

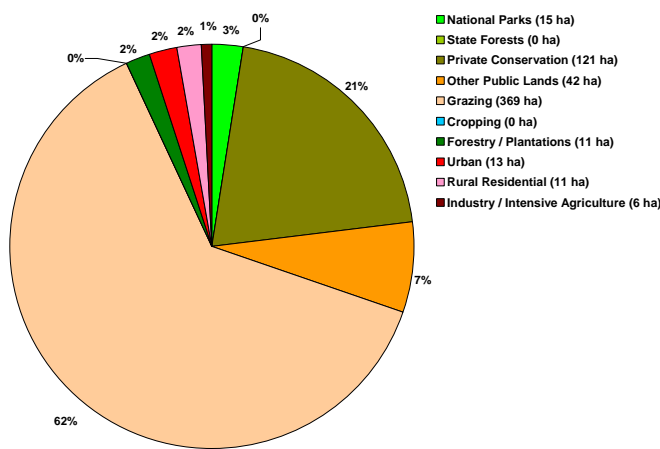


Land use within the sub-catchment

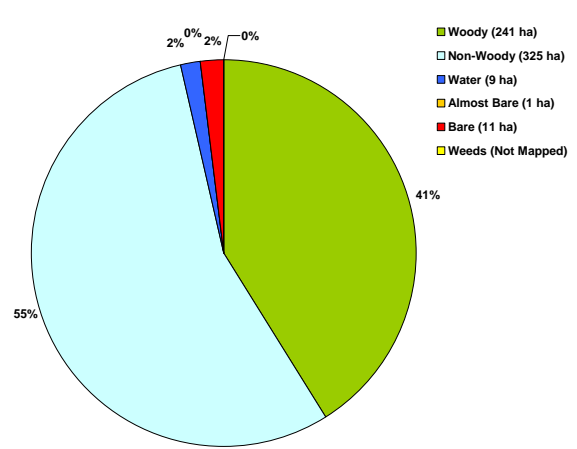
Report Card

Minnamurra Riparian Zone Summary

- Grazing comprises the largest area within the riparian zone (62%).
- Woody riparian cover composes approximately 41% of the riparian area and about 52% of the woody riparian cover is located within Private Conservation and National Parks land use categories.



Land use within the riparian zone



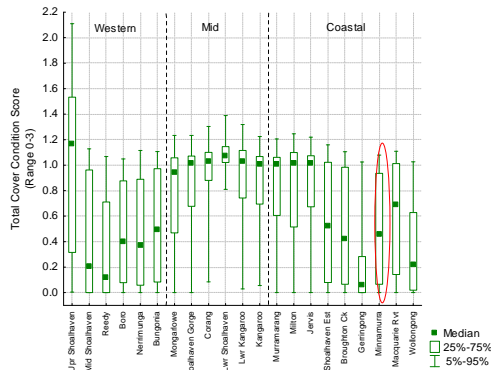
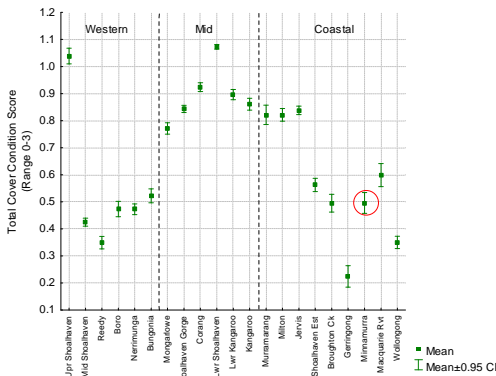
Land cover classes within the riparian zone

Cover Class by land use within the riparian zone

Cover Class	Landuse	Conservation		Other Conservation		Agriculture			Other		
		National Parks	State Forests	Private Conservation	Other Public Lands	Grazing	Cropping	Forestry / Plantations	Urban	Rural Residential	Industry / Intensive Agriculture
Woody	Area (ha)	14.6	0.0	112.1	23.1	74.7	0.0	9.4	2.4	4.8	0.4
	% of Cover Class	6.0%	0.0%	46.4%	9.5%	30.9%	0.0%	3.9%	1.0%	2.0%	0.2%
Non-Woody	Area (ha)	0.7	0.0	6.5	15.4	283.4	0.1	1.5	9.6	6.0	1.8
	% of Cover Class	0.2%	0.0%	2.0%	4.7%	87.2%	0.0%	0.4%	3.0%	1.8%	0.6%
Water	Area (ha)	0.0	0.0	1.8	1.5	4.8	0.0	0.0	0.1	0.0	0.8
	% of Cover Class	0.0%	0.0%	20.3%	16.4%	52.8%	0.0%	0.0%	1.6%	0.2%	8.6%
Almost Bare	Area (ha)	0.0	0.0	0.1	0.1	0.9	0.0	0.0	0.0	0.0	0.0
	% of Cover Class	0.0%	0.0%	5.0%	7.4%	83.7%	0.0%	1.4%	1.4%	0.5%	0.5%
Bare	Area (ha)	0.0	0.0	0.2	2.3	5.3	0.0	0.0	0.4	0.3	2.6
	% of Cover Class	0.0%	0.0%	1.6%	21.0%	48.5%	0.0%	0.0%	3.3%	2.3%	23.3%
Weeds	Area (ha)	N/A	N/A	N/A	N/A	N/A	N/A	N/A	N/A	N/A	N/A
	% of Cover Class	N/A	N/A	N/A	N/A	N/A	N/A	N/A	N/A	N/A	N/A

Report Card - Woody cover

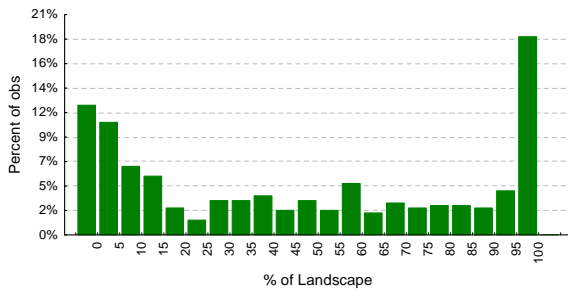
Minnamurra – Woody Cover



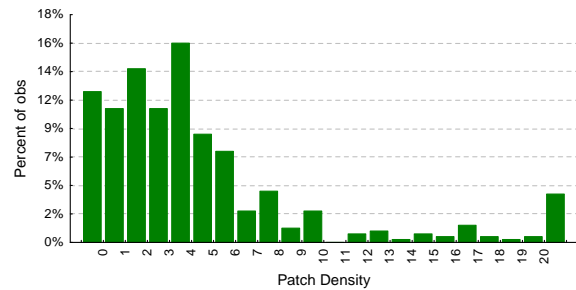
Overall Rank: 19/21
Zonal Rank : 7/9
(Ranks are based on Sub-catchment Woody Cover Score)

Comparison of mean median woody cover scores across study area

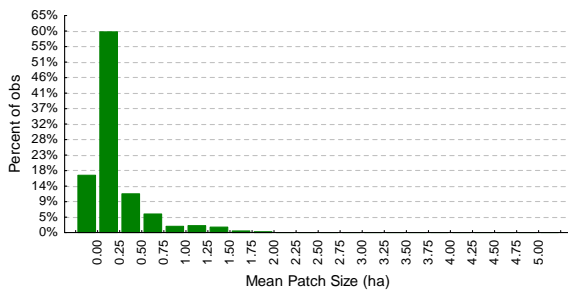
- The riparian zone in approximately 42% of the sub-catchment tiles, where woody vegetation cover is present, consists of 50% or more woody cover, i.e. woody cover is very dominant in the riparian zones of these tiles. However, woody riparian cover is much less dominant in 35% of the sub-catchment tiles, where it consists of 20 % or less of the riparian area within a tile.
- The relatively high values of the Patch Density graph indicate fragmented woody riparian cover.
- The low values of the Mean Patch Size graph indicate that the woody riparian cover is grainy.



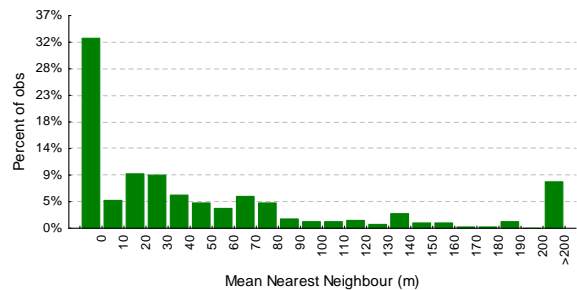
Distribution of the percentage of woody vegetation or **Percent of Landscape (PL)** within tiles in the riparian zones of the sub-catchment.



Distribution of the woody vegetation Patch Density (ha) within tiles in the riparian zones.



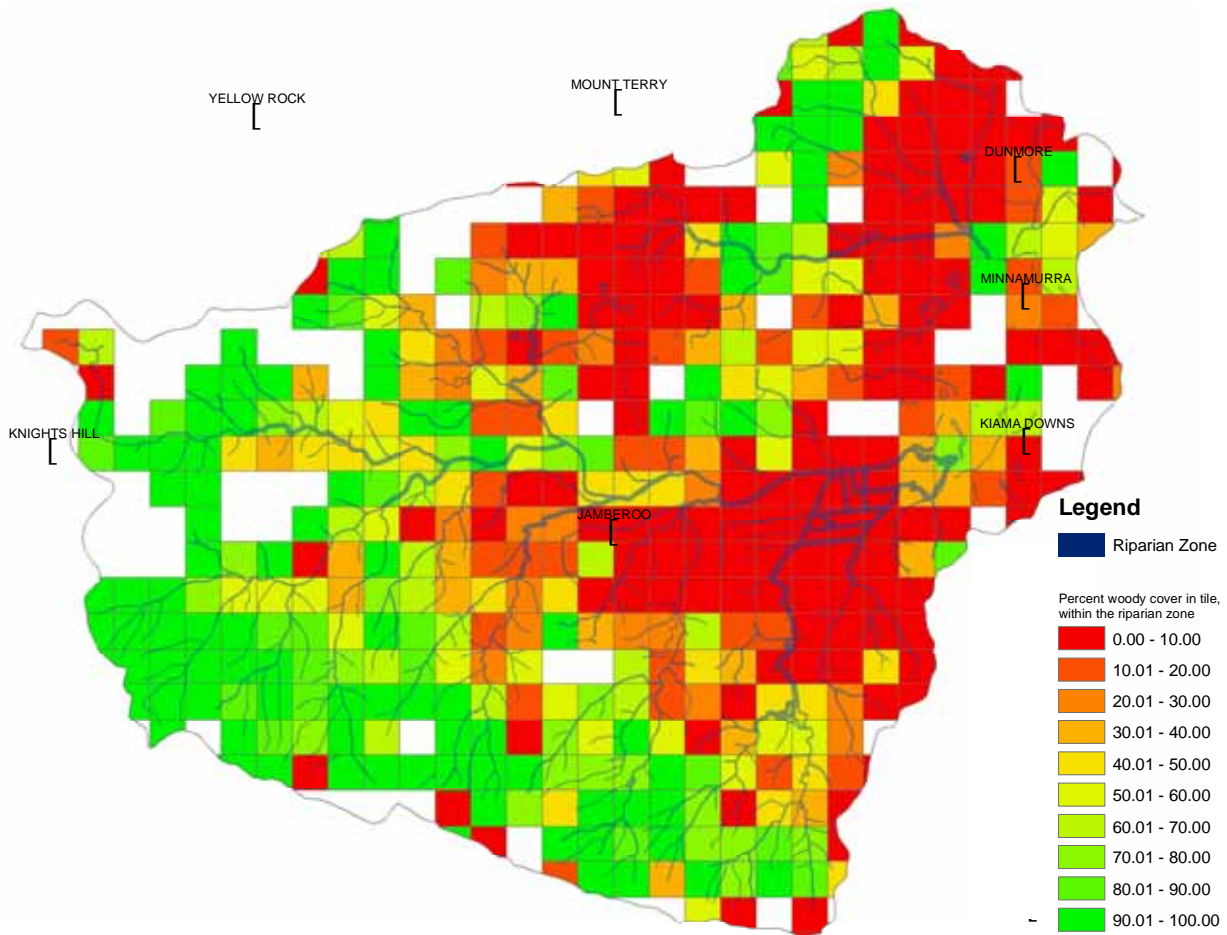
Distribution of mean patch size (ha) of woody vegetation in the riparian zones.



Distribution of the Mean Nearest Neighbour (Metres) distance between woody vegetation patches within tiles in the riparian zones.

Report Card - Woody cover

Minnamurra – Woody cover

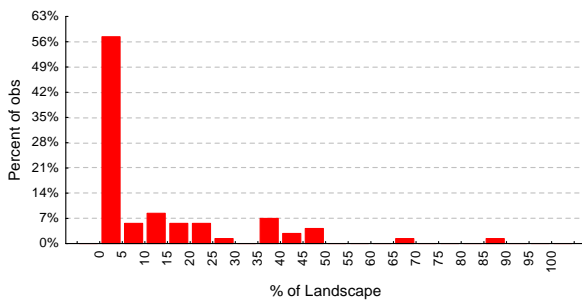


Woody cover map for Minnamurra sub-catchment

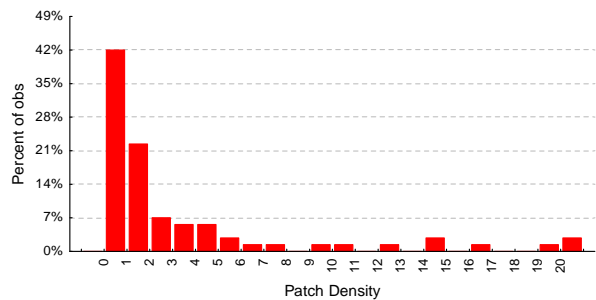
- The south and western parts of the sub-catchment have the highest proportions of intact woody vegetation cover within the riparian zone.
- The riparian woody vegetation cover in the central and northern parts, where Grazing and Urban are the predominant land use types, is less dominant and fragmented.

Minnamurra – Bare

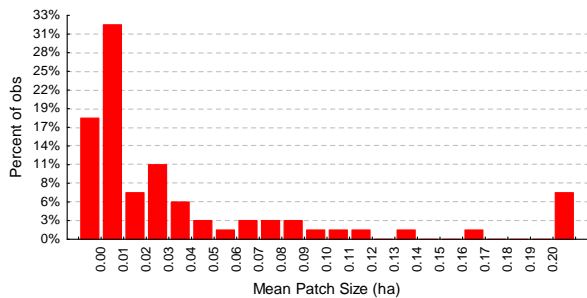
- The **% Landscape** graph shows that Bare areas generally do not dominate the riparian area in this sub-catchment. Where the Bare areas are present within tiles, they occupy 5% or less of the riparian zone in approximately 56% of the tiles.
- Bare areas are generally small in size as indicated by the Mean Patch Size graph.



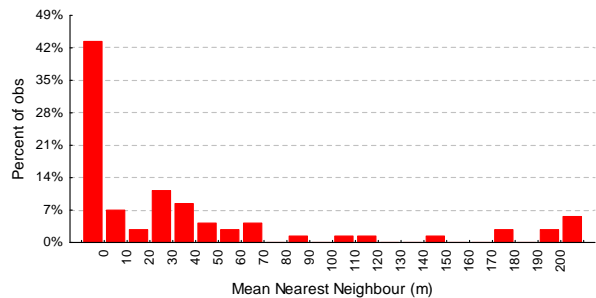
Distribution of the percentage of Bare area or Percent of Landscape (PL) within tiles in the riparian zones.



Distribution of the Bare Patch Density (PD) within tiles in the riparian zones.

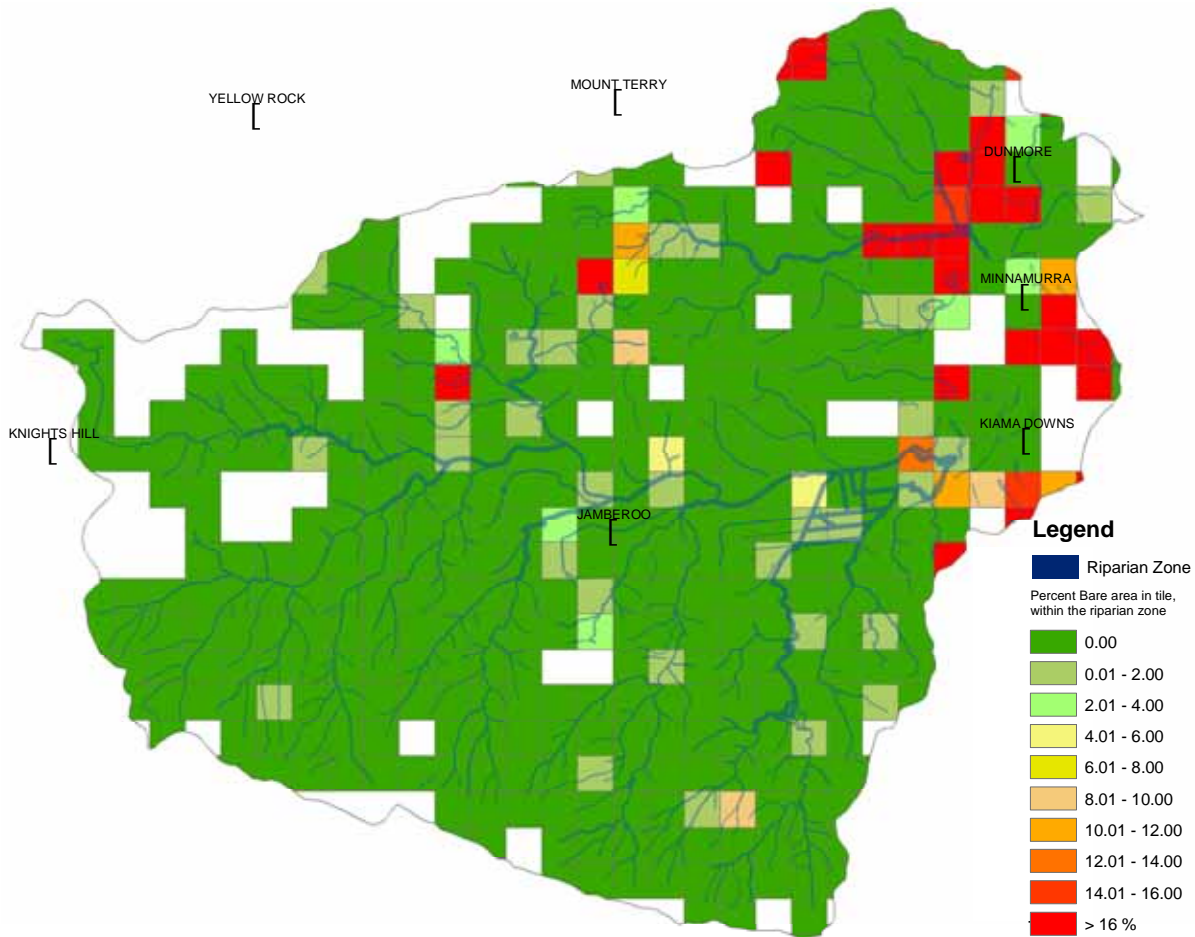


Distribution of mean patch size of Bare areas in the riparian zones.



Distribution of the Mean Nearest Neighbour (MNN) distance between Bare patches within tiles in the riparian zones.

Minnamurra – Bare



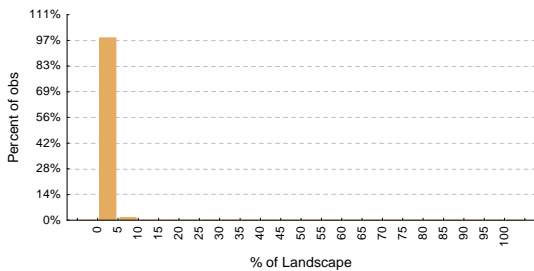
Bare map of Minnamurra sub-catchment

- Bare areas exist predominantly in riparian zones where Industry/Intensive Agriculture is the main land use type.
- Where Bare areas exist, they generally compose a small proportion of the riparian zone.

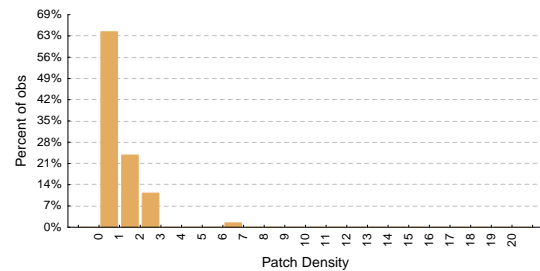
Report Card - Almost Bare

Minnamurra – Almost Bare

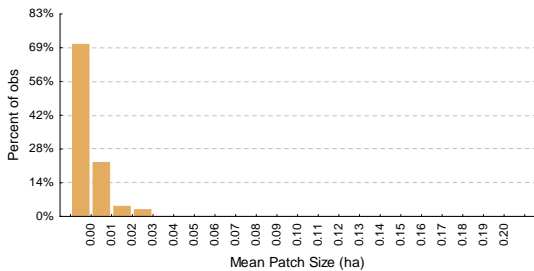
- The **% Landscape** graph shows that Bare areas generally do not dominate the riparian area in this sub-catchment. Where the Bare areas are present within tiles, they occupy 5% or less of the riparian zone in approximately 97% of the tiles.
- Bare areas are generally small in size as indicated by the Mean Patch Size graph.



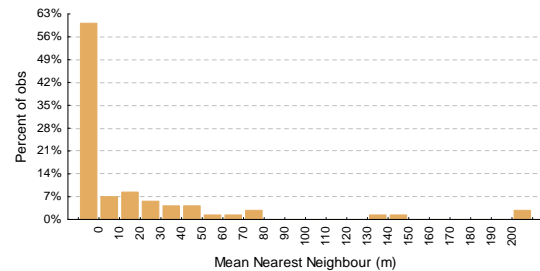
Distribution of the percentage of *Almost bare* area or **Percent of Landscape (PL)** within tiles in the riparian zones.



Distribution of the *Almost Bare* Patch Density (Ha) within tiles in the riparian zones.



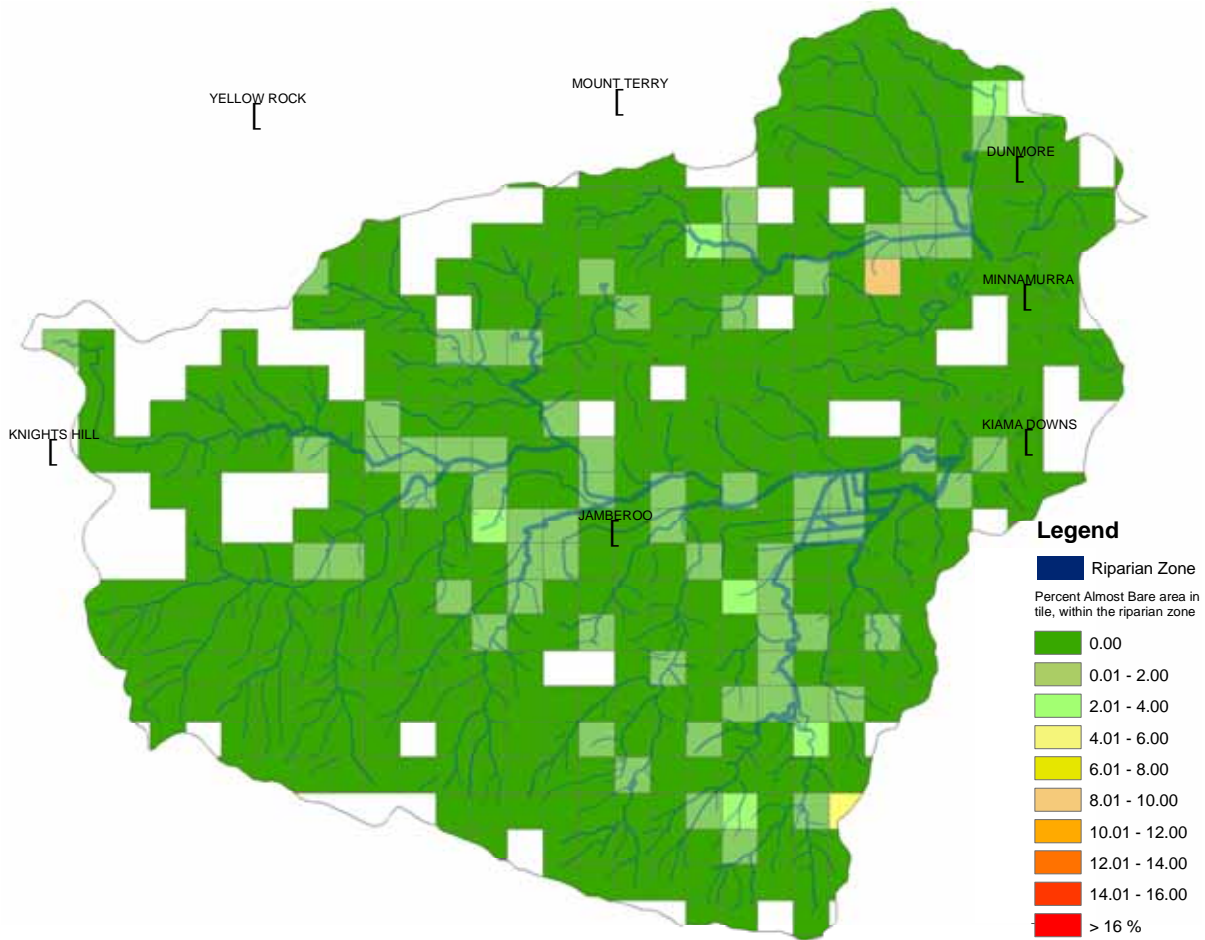
Distribution of mean patch size (Ha) of *Almost Bare* areas in the riparian zones.



Distribution of the Mean Nearest Neighbour (metres) distance between *Almost Bare* patches within tiles in the riparian zones.

Report Card - Almost Bare

Minnamurra – Almost Bare



Almost Bare map of Minnamurra sub-catchment

- Where Almost Bare areas exist, they generally compose a small proportion of the riparian zone.