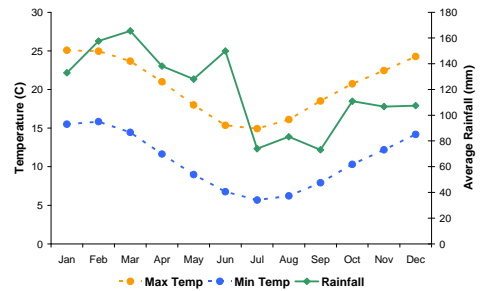


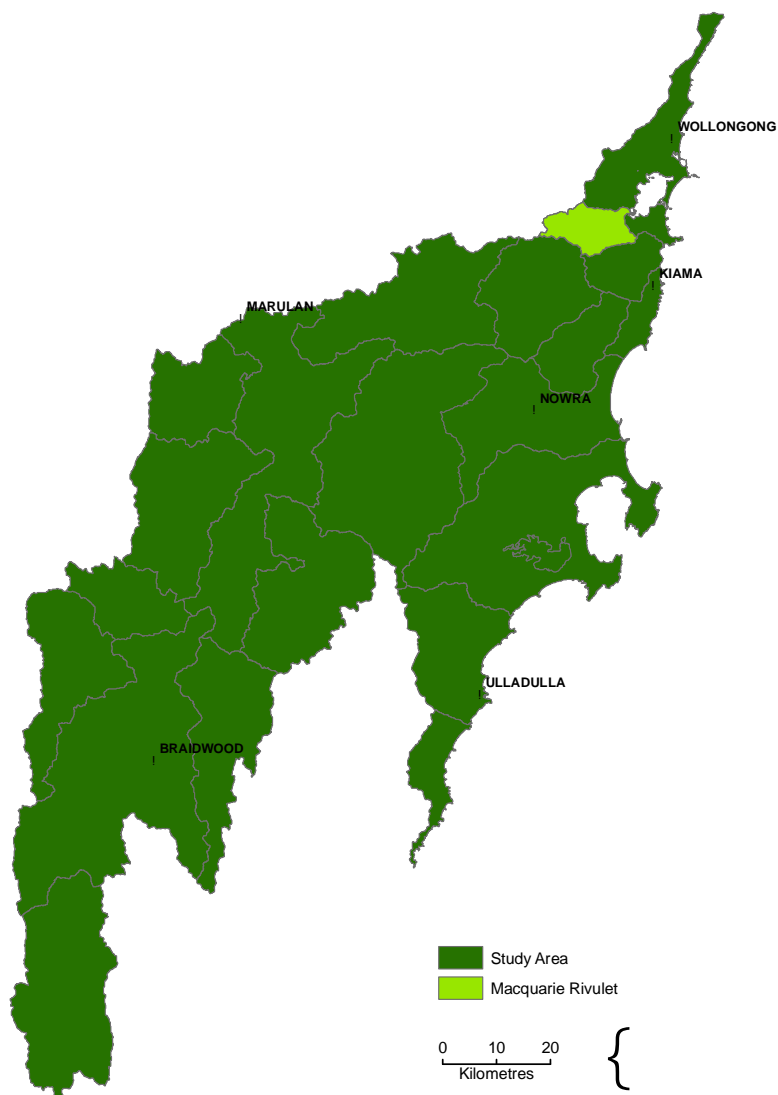
Report Card - Macquarie Rivulet

General Information

Sub-catchment size	106 km ²
Riparian landscape area	5 km ²
Average annual rainfall range	1110-1990 mm
Median annual rainfall	1440 mm
Elevation range	0-792 m
Sub-catchment stream length	329 km
Analysis area stream length	233 km



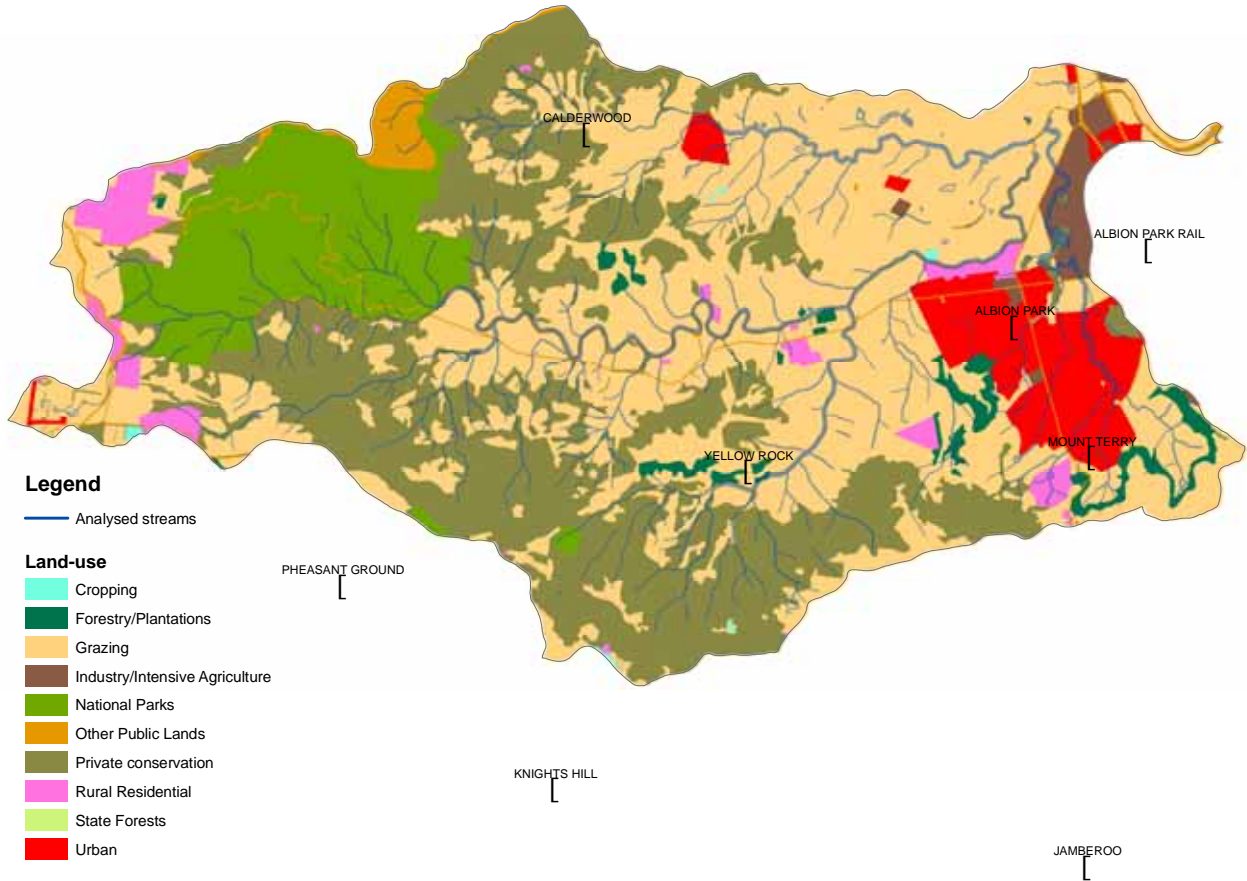
Average daily temperature and monthly rainfall data



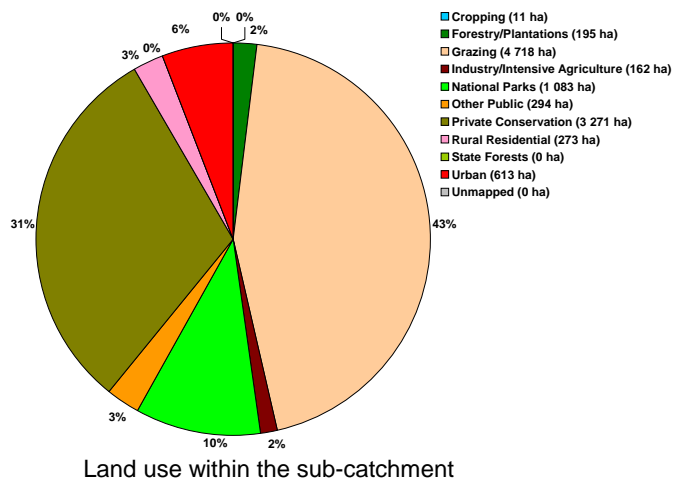
Location of Macquarie Rivulet sub-catchment within study area

Report Card

Land Use



Land use Map for Macquarie Rivulet sub-catchment

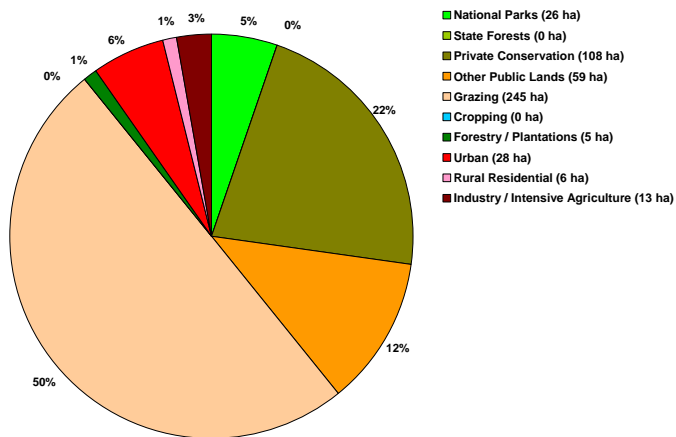


Land use within the sub-catchment

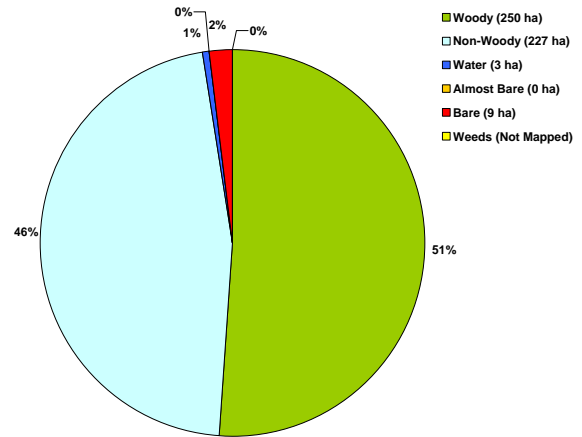
Report Card

Macquarie Rivulet Sub-catchment Riparian Zone Summary

- Grazing comprises the largest area within the riparian zone.
- Approximately 51% of the riparian area is woody and approximately 49% of woody riparian cover is located within National Parks and Private Conservation.



Land use within the riparian zone



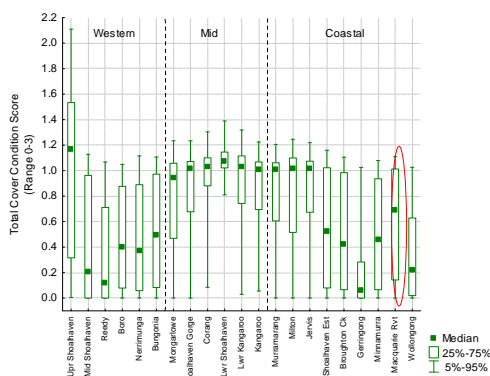
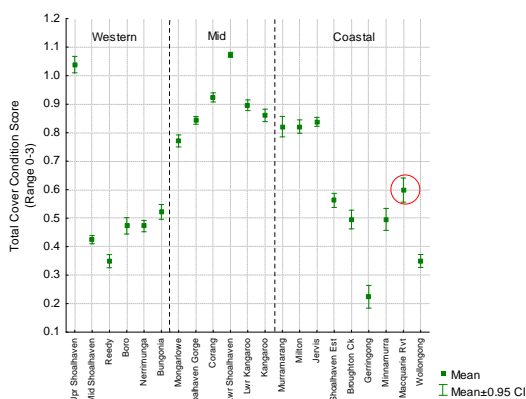
Land cover classes within the riparian zone

Cover Class by land use within the riparian zone

Cover Class	Landuse	Conservation		Other Conservation		Agriculture			Other		Industry / Intensive Agriculture
		National Parks	State Forests	Private Conservation	Other Public Lands	Grazing	Cropping	Forestry / Plantations	Urban	Rural Residential	
Woody	Area (ha)	25.8	0.0	96.6	43.1	71.3	0.1	3.9	6.5	2.4	0.7
	% of Cover Class	10.3%	0.0%	38.6%	17.2%	28.5%	0.1%	1.6%	2.6%	0.9%	0.3%
Non-Woody	Area (ha)	0.1	0.0	10.6	14.8	166.4	0.2	1.3	18.2	3.0	12.5
	% of Cover Class	0.1%	0.0%	4.7%	6.5%	73.3%	0.1%	0.6%	8.0%	1.3%	5.5%
Water	Area (ha)	0.0	0.0	0.2	0.3	2.0	0.0	0.0	0.0	0.1	0.0
	% of Cover Class	0.0%	0.0%	8.1%	11.8%	74.2%	0.0%	0.0%	0.5%	4.9%	0.5%
Almost Bare	Area (ha)	0.0	0.0	0.0	0.0	0.2	0.0	0.0	0.0	0.0	0.0
	% of Cover Class	0.0%	0.0%	6.3%	15.2%	60.7%	0.0%	0.0%	5.4%	10.7%	1.8%
Bare	Area (ha)	0.0	0.0	0.2	0.4	4.8	0.0	0.0	3.1	0.5	0.2
	% of Cover Class	0.0%	0.0%	1.7%	4.1%	52.9%	0.0%	0.0%	34.3%	5.2%	1.9%
Weeds	Area (ha)	N/A	N/A	N/A	N/A	N/A	N/A	N/A	N/A	N/A	N/A
	% of Cover Class	N/A	N/A	N/A	N/A	N/A	N/A	N/A	N/A	N/A	N/A

Report Card - Woody cover

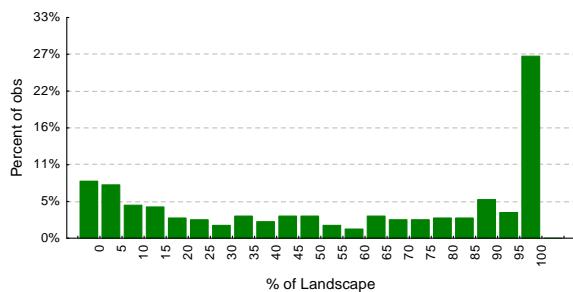
Macquarie Rivulet – Woody Cover



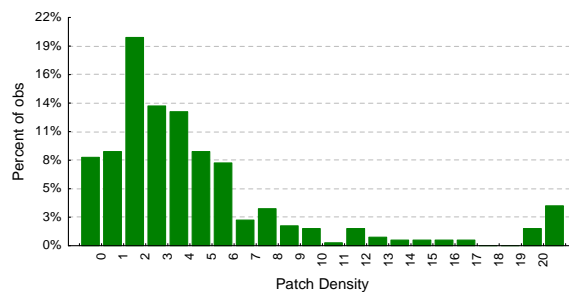
Overall Rank: 13/21
Zonal Rank: 5/9
(Ranks are based on Subcatchment Woody Cover Score)

Comparison of mean and median Woody cover scores across study area

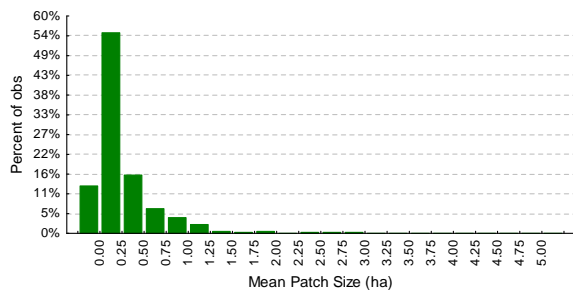
- The riparian zone in approximately 48% of the sub-catchment tiles, where woody vegetation cover is present, consists of 50% or more woody cover, i.e. woody cover is very dominant in the riparian zones of these tiles. However, woody riparian cover is much less dominant in 22% of the sub-catchment tiles, where it consists of 20 % or less of the riparian area within a tile.
- The moderate values of the Patch Density graph indicate moderate fragmentation while the low values of the Mean Patch Size graph indicate that the woody riparian cover is grainy.



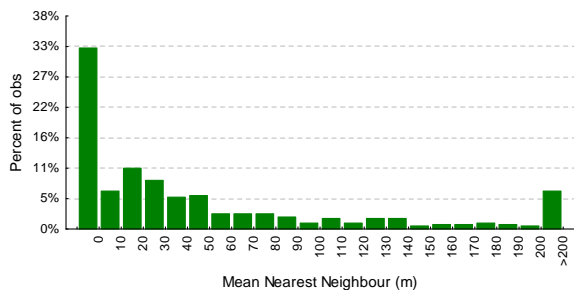
Distribution of the percentage of woody vegetation or **Percent of Landscape (PL)** within tiles in the riparian zones of the subcatchment.



Distribution of the woody vegetation Patch Density (ha) within tiles in the riparian zones.



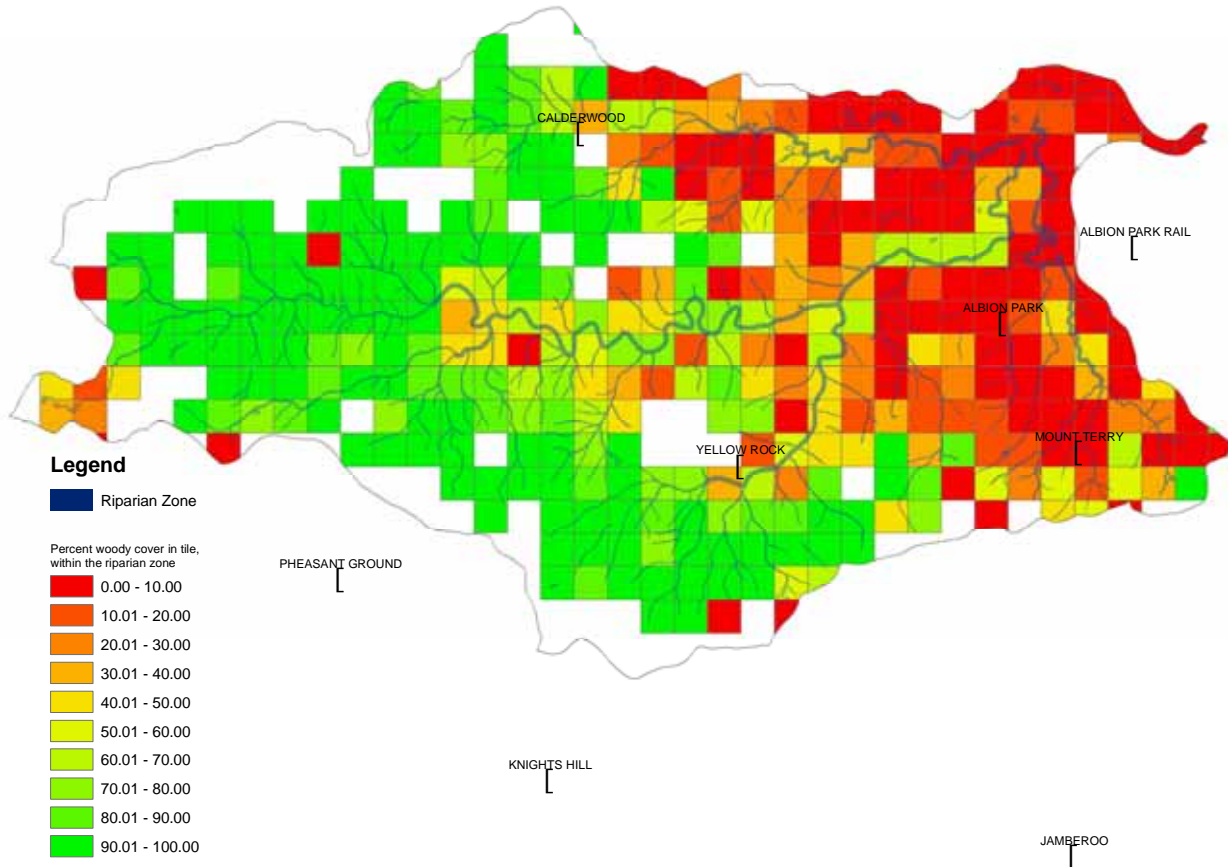
Distribution of mean patch size (ha) of woody vegetation in the riparian zones.



Distribution of the Mean Nearest Neighbour (Metres) distance between woody vegetation patches within tiles in the riparian zones.

Report Card - Woody cover

Macquarie Rivulet – Woody cover

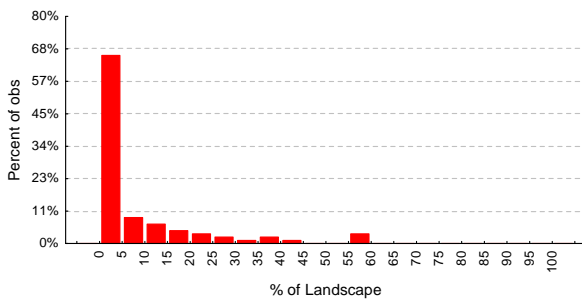


Woody cover map for Macquarie Rivulet sub-catchment

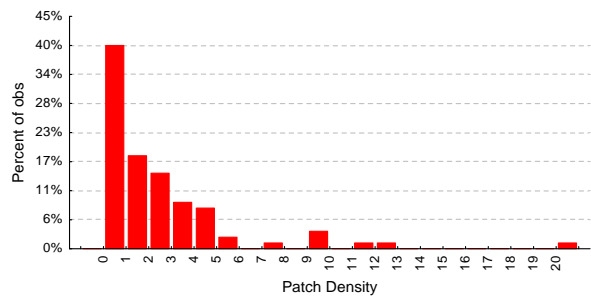
- The upper (western) reaches of the sub-catchment, where National Parks and Private Conservation State Forests are the predominant land use types, have highest proportions of intact woody vegetation cover within the riparian zone.
- The woody riparian vegetation cover in the eastern parts of the sub-catchment, where Grazing and Urban are the predominant land use types, is less dominant and fragmented.

Macquarie Rivulet – Bare

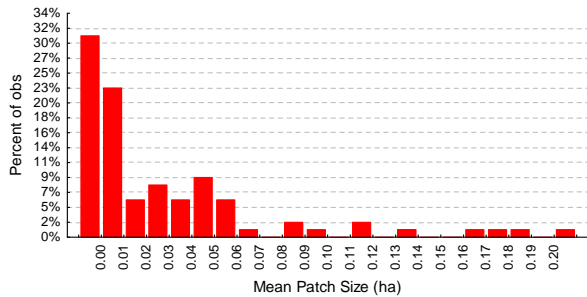
- The % Landscape graph shows that Bare areas generally do not dominate the riparian area in this sub-catchment. Where the Bare areas are present within tiles, they occupy 5% or less of the riparian zone in approximately 66% of the tiles.
- Bare areas are generally small in size as indicated by the Mean Patch Size graph.



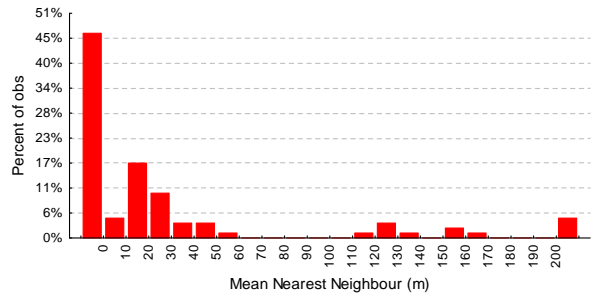
Distribution of the percentage of *Bare* area or **Percent of Landscape (PL)** within tiles in the riparian zones.



Distribution of the *Bare* Patch Density (PD) within tiles in the riparian zones.

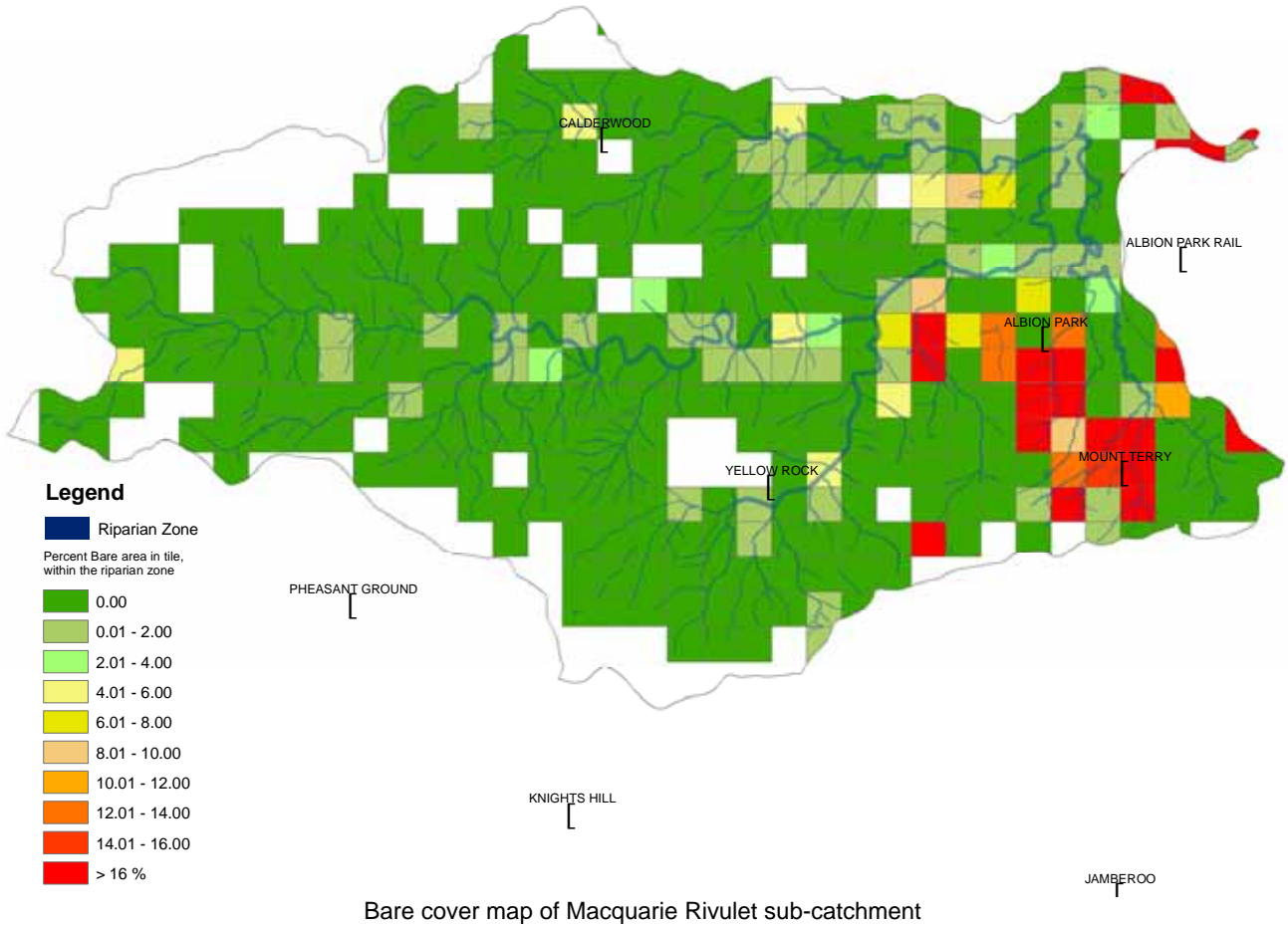


Distribution of mean patch size of *Bare* areas in the riparian zones.



Distribution of the Mean Nearest Neighbour (MNN) distance between *Bare* patches within tiles in the riparian zones.

Macquarie Rivulet – Bare

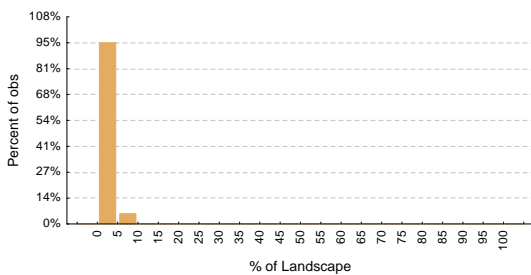


- Bare areas exist predominantly in riparian zones where Urban is the predominant land use.

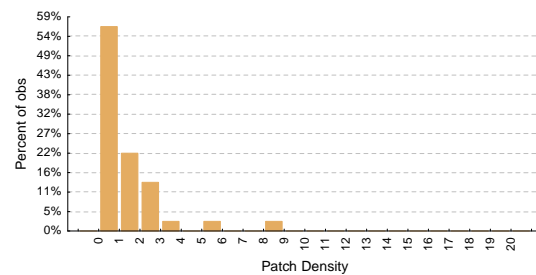
Report Card - Almost Bare

Macquarie Rivulet – Almost Bare

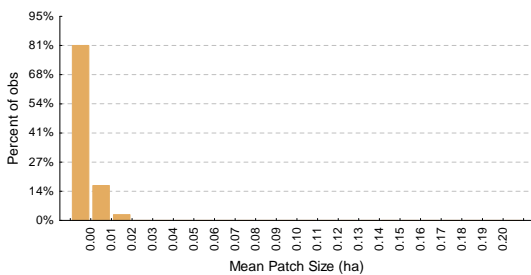
- The **% Landscape** graph shows that Almost Bare areas generally do not dominate the riparian area in this sub-catchment. Where the Almost Bare areas are present within tiles, they occupy 5% or less of the riparian zone in approximately 95% of the tiles.
- Almost Bare areas are generally small in size as indicated by the Mean Patch Size graph.



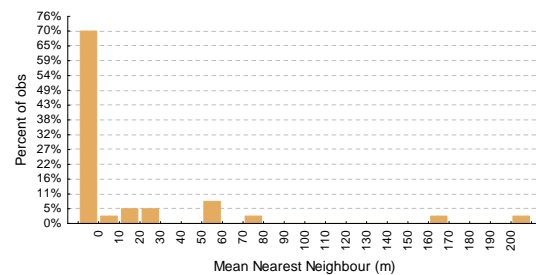
Distribution of the percentage of *Almost bare* area or **Percent of Landscape (PL)** within tiles in the riparian zones.



Distribution of the *Almost Bare* Patch Density (Ha) within tiles in the riparian zones.



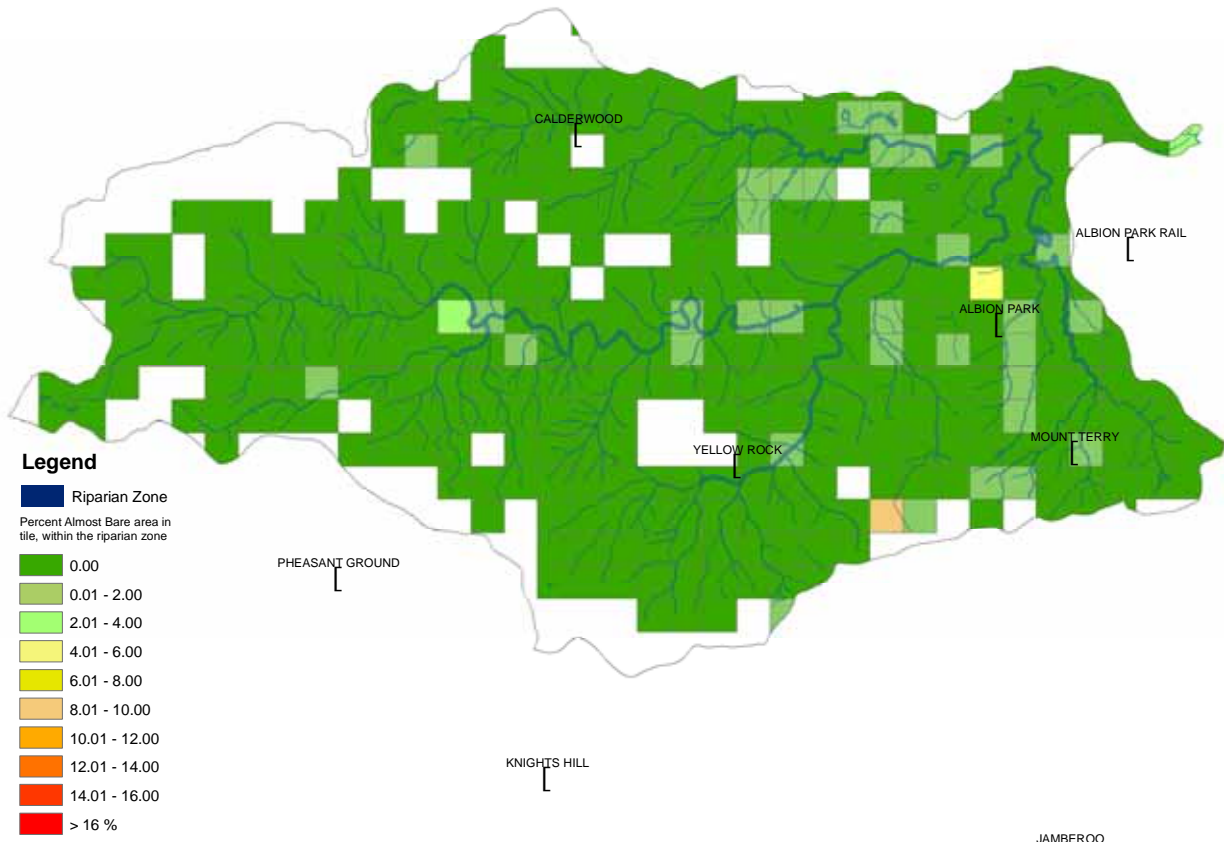
Distribution of mean patch size (Ha) of *Almost Bare* areas in the riparian zones.



Distribution of the Mean Nearest Neighbour (metres) distance between *Almost Bare* patches within tiles in the riparian zones.

Report Card - Almost Bare

Macquarie Rivulet – Almost Bare



- Almost Bare areas are not prevalent in this sub-catchment.
- Where Almost Bare areas exist, they generally compose a small proportion of the riparian zone.