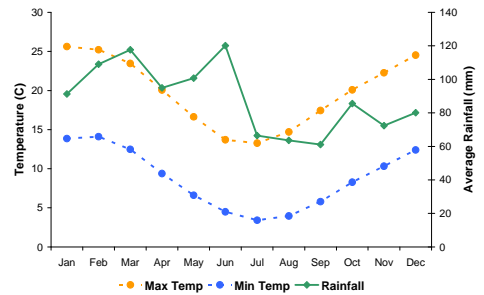


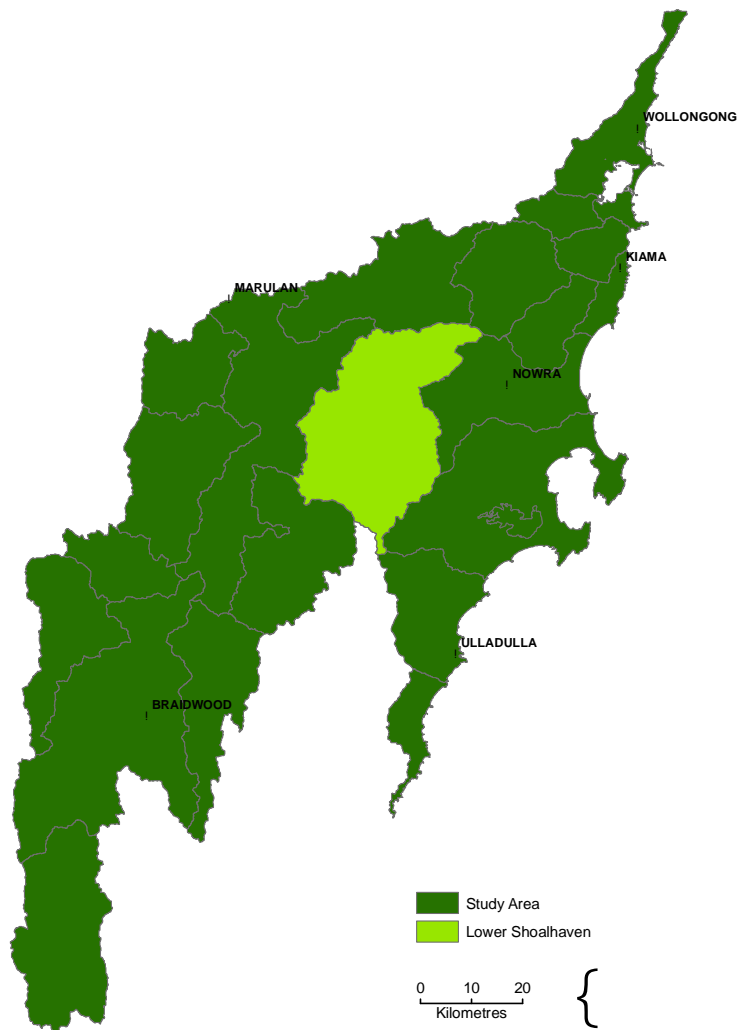
## Report Card - Lower Shoalhaven

### General Information

<i>Sub-catchment size</i>	878 km <sup>2</sup>
<i>Riparian landscape area</i>	37 km <sup>2</sup>
<i>Average annual rainfall range</i>	866-1600 mm
<i>Median annual rainfall</i>	1050 mm
<i>Elevation range</i>	2-793 m
<i>Sub-catchment stream length</i>	2950 km
<i>Analysis area stream length</i>	1560 km



Average daily temperature and monthly rainfall data

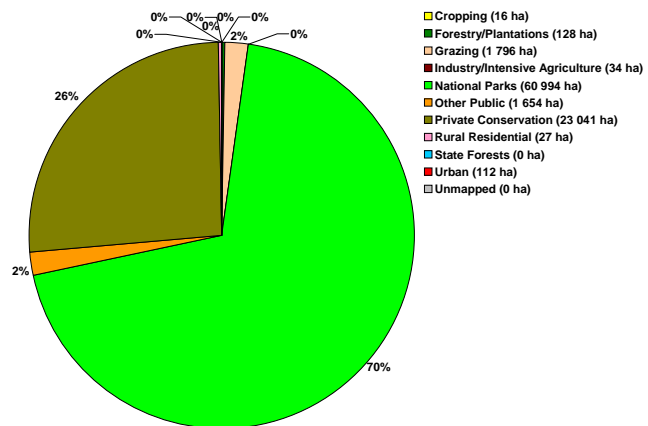


Location of Lower Shoalhaven sub-catchment within study area

## Land Use



Land use Map for Lower Shoalhaven sub-catchment

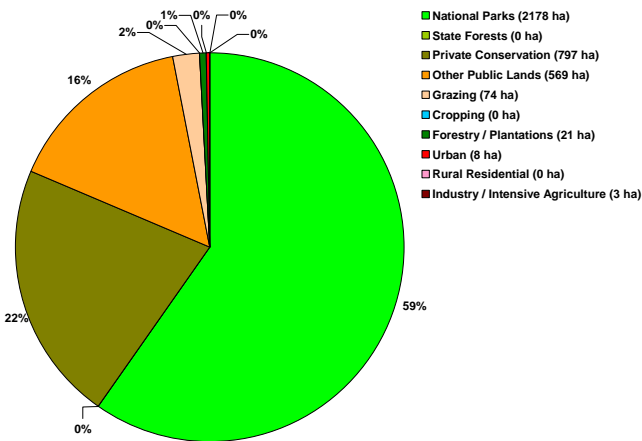


Land use within the sub-catchment

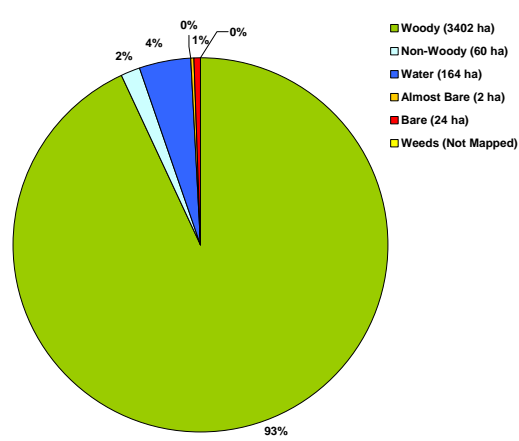
# Report Card

## Lower Shoalhaven Riparian Zone Summary

- National Parks comprise the largest area within the riparian zone (59%).
- Woody riparian cover dominates the riparian area, comprising 93% and approximately 63% of the woody riparian cover is within National Parks.
- Bare areas compose a small proportion of the riparian zone (<1%).



Land use within the riparian zone



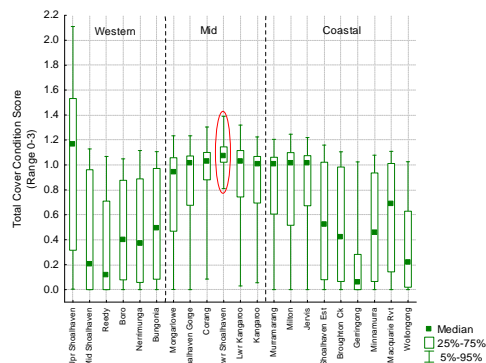
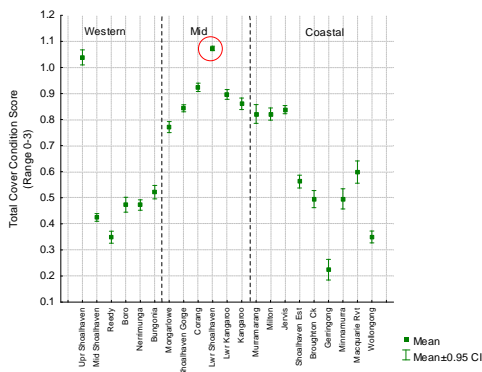
Land cover classes within the riparian zone

### Cover Class by land use within the riparian zone

Cover Class	Landuse	Conservation		Other Conservation		Agriculture			Other		
		National Parks	State Forests	Private Conservation	Other Public Lands	Grazing	Cropping	Forestry / Plantations	Urban	Rural Residential	Industry / Intensive Agriculture
Woody	Area (ha)	2154.3	0.0	789.8	385.2	44.9	0.0	20.7	6.7	0.1	0.2
	% of Cover Class	63.3%	0.0%	23.2%	11.3%	1.3%	0.0%	0.6%	0.2%	0.0%	0.0%
Non-Woody	Area (ha)	17.0	0.0	3.8	9.5	28.5	0.0	0.4	0.6	0.0	0.1
	% of Cover Class	28.3%	0.0%	6.4%	15.9%	47.5%	0.0%	0.7%	1.1%	0.1%	0.1%
Water	Area (ha)	4.2	0.0	3.0	152.8	0.8	0.0	0.0	0.2	0.0	2.5
	% of Cover Class	2.6%	0.0%	1.8%	93.4%	0.5%	0.0%	0.0%	0.1%	0.0%	1.6%
Almost Bare	Area (ha)	0.2	0.0	0.2	1.2	0.1	0.0	0.0	0.1	0.0	0.0
	% of Cover Class	10.3%	0.0%	9.9%	69.9%	5.1%	0.0%	0.0%	3.6%	0.0%	1.3%
Bare	Area (ha)	2.5	0.0	0.4	19.8	0.1	0.0	0.0	0.2	0.0	0.6
	% of Cover Class	10.5%	0.0%	1.7%	83.6%	0.5%	0.0%	0.0%	0.9%	0.0%	2.7%
Weeds	Area (ha)	N/A	N/A	N/A	N/A	N/A	N/A	N/A	N/A	N/A	N/A
	% of Cover Class	N/A	N/A	N/A	N/A	N/A	N/A	N/A	N/A	N/A	N/A

# Report Card - Woody cover

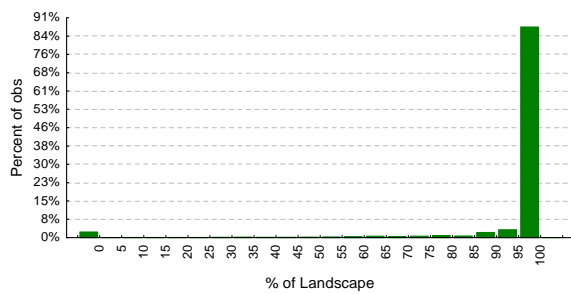
## Lower Shoalhaven – Woody Cover



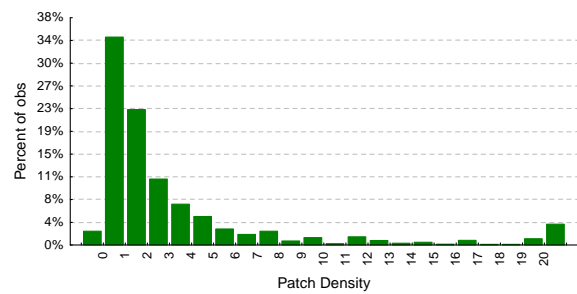
Overall Rank: 1/21  
 Zonal Rank: 1/6  
 (Ranks are based on Subcatchment Woody Cover Score)

Comparison of mean and median woody cover scores across study area.

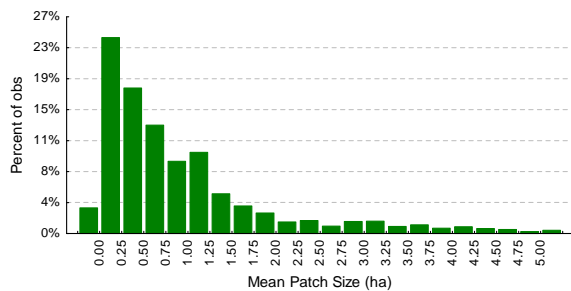
- The riparian zone in approximately 97% of the subcatchment tiles, where woody vegetation cover is present, consists of 50% or more woody cover, i.e. woody cover is very dominant in the riparian zones of these tiles.
- The relatively low values of the Patch Density graph indicate low fragmentation of the woody riparian cover while the wide spread of relatively high values of the Mean Patch Size graph indicate that the woody riparian cover is less grainy.
- The low values of the Mean Nearest Neighbour graph indicate good connectivity of the woody riparian cover within the subcatchment.



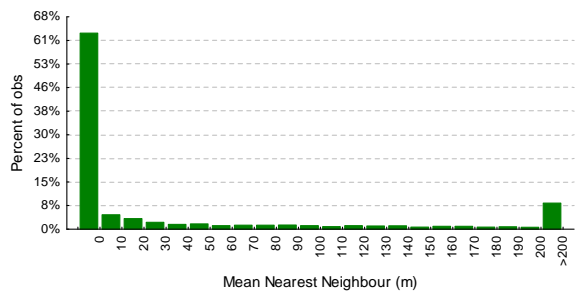
Distribution of the percentage of woody vegetation or **Percent of Landscape (PL)** within tiles in the riparian zones of the subcatchment.



Distribution of the woody vegetation Patch Density (ha) within tiles in the riparian zones.

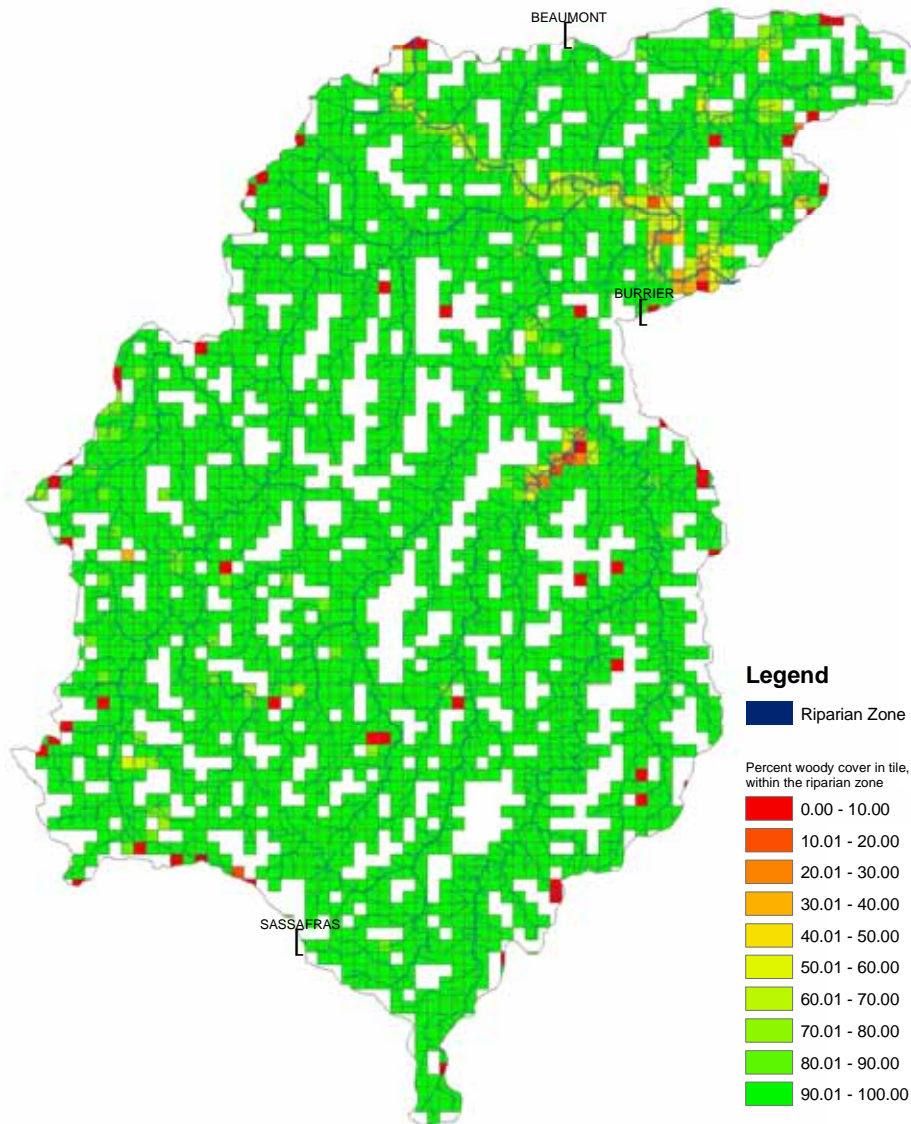


Distribution of mean patch size (ha) of woody vegetation in the riparian zones.



Distribution of the Mean Nearest Neighbour (Metres) distance between woody vegetation patches within tiles in the riparian zones.

# Report Card - Woody cover

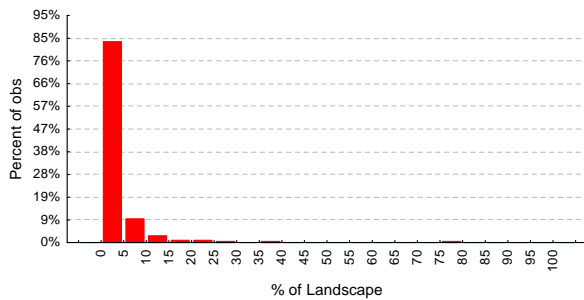


Woody cover map for Lower Shoalhaven sub-catchment

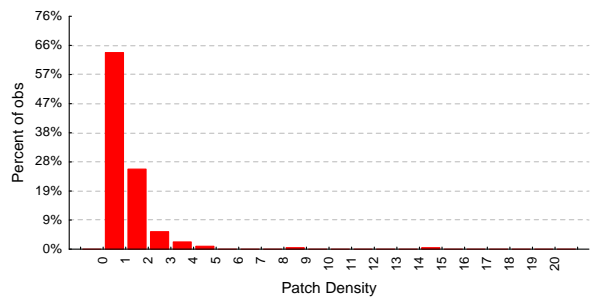
- High proportions of woody riparian cover exist throughout the subcatchment. However, the woody riparian cover appears less dominant along the Shoalhaven River and around Danjera Dam (central east location) mainly because the water areas which compose large proportions of the riparian zone were included in the calculations.

## Lower Shoalhaven – Bare

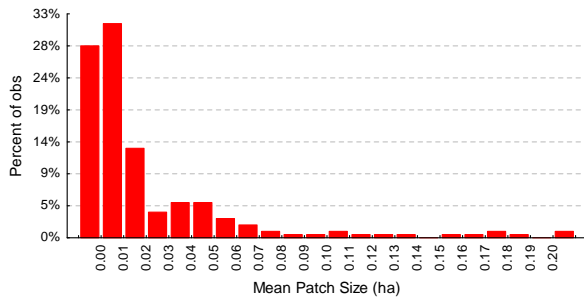
- The **% Landscape** graph shows that Bare areas generally do not dominate the riparian area in this subcatchment. Where the Bare areas are present within tiles, they occupy 5% or less of the riparian zone in approximately 80% of the tiles.
- Bare areas are generally small as indicated by the Mean Patch Size graph.



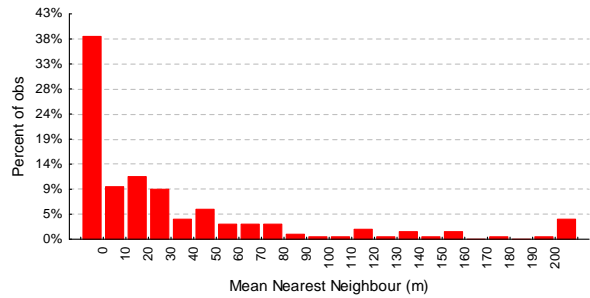
Distribution of the percentage of *Bare* area or **Percent of Landscape (PL)** within tiles in the riparian zones.



Distribution of the *Bare* Patch Density (PD) within tiles in the riparian zones.

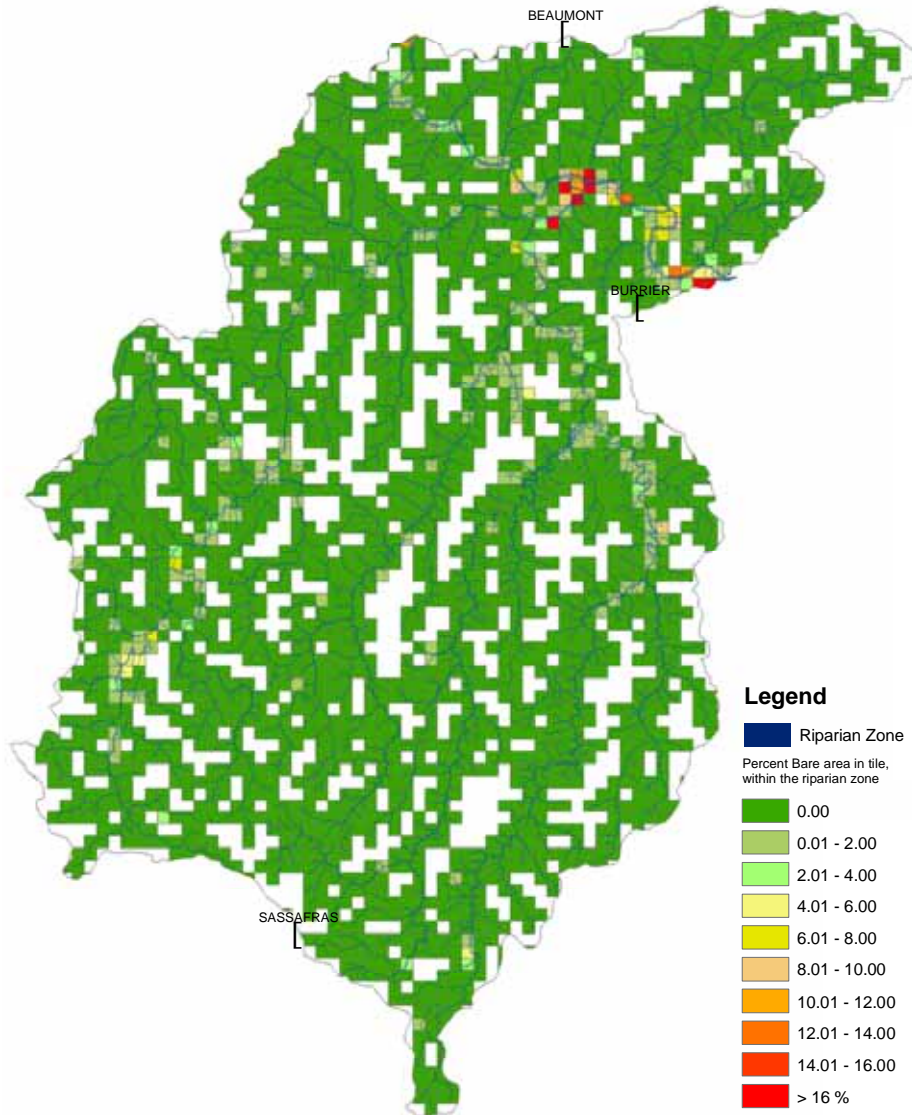


Distribution of mean patch size of *Bare* areas in the riparian zones.



Distribution of the Mean Nearest Neighbour (MNN) distance between *Bare* patches within tiles in the riparian zones.

## Lower Shoalhaven – Bare



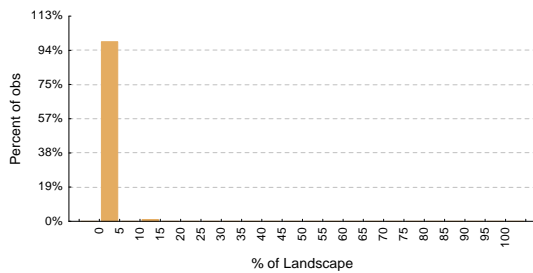
Bare cover map of Lower Shoalhaven sub-catchment

- Bare areas generally compose a small proportion of the riparian zone within the subcatchment. Riparian zones with higher proportions of bare area are localised and occur along the Shoalhaven River.

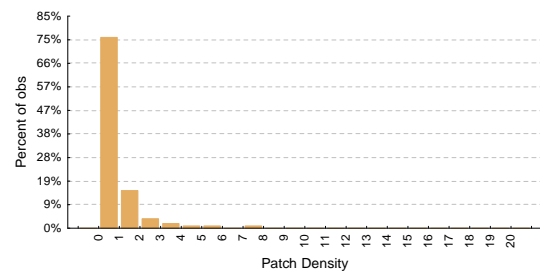
# Report Card - Almost Bare

## Lower Shoalhaven – Almost Bare

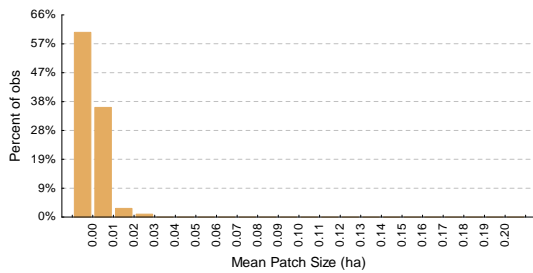
- The % Landscape graph shows that Almost Bare areas generally do not dominate the riparian area in this subcatchment. In tiles where the Almost Bare area patches are present, the patches compose less than 5% of the riparian zone in approximately 95% of the tiles.
- Almost Bare areas are generally small as indicated by the Mean Patch Size graph.



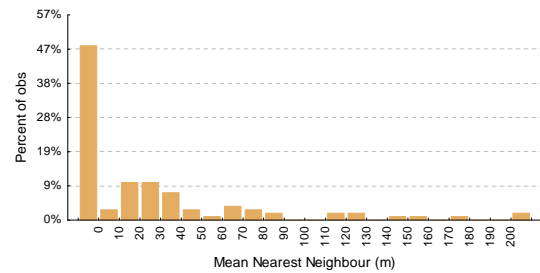
Distribution of the percentage of *Almost bare* area or **Percent of Landscape (PL)** within tiles in the riparian zones.



Distribution of the *Almost Bare* Patch Density (Ha) within tiles in the riparian zones.



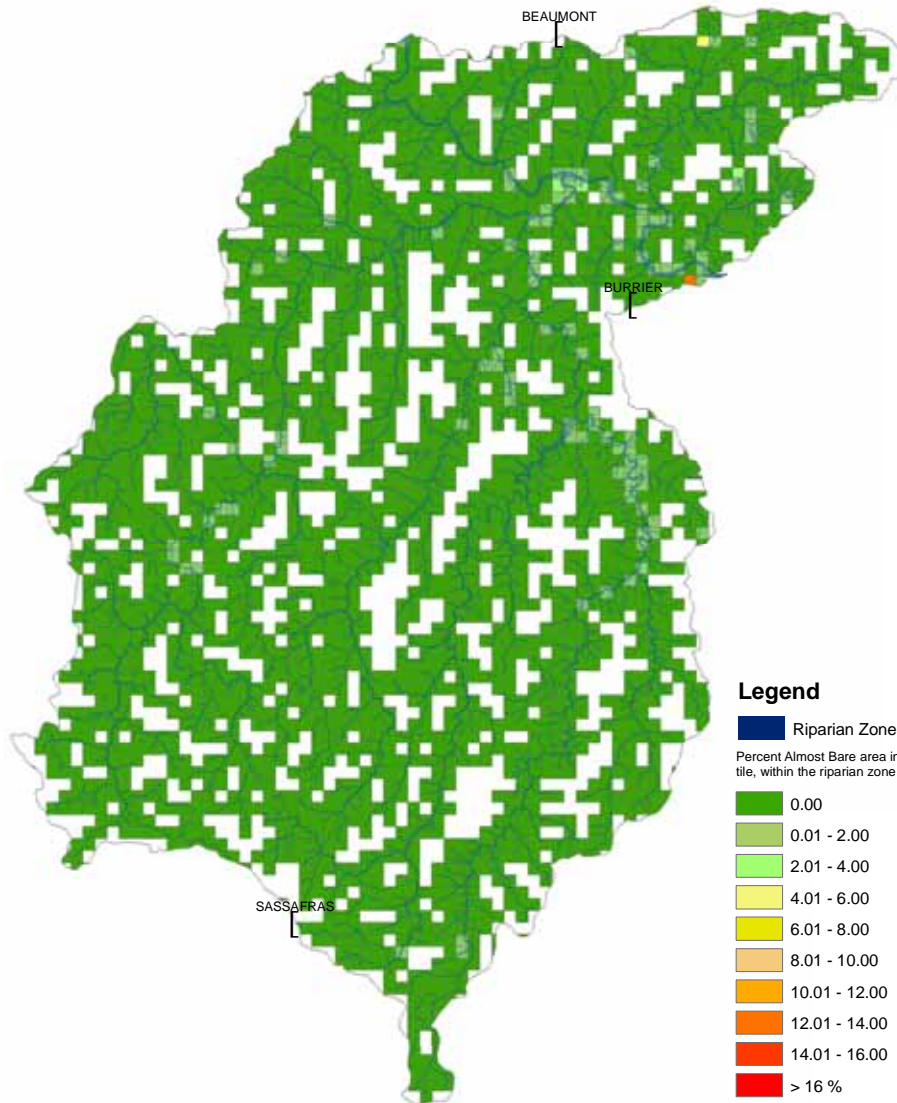
Distribution of mean patch size (Ha) of *Almost Bare* areas in the riparian zones.



Distribution of the Mean Nearest Neighbour (metres) distance between *Almost Bare* patches within tiles in the riparian zones.

# Report Card - Almost Bare

## Lower Shoalhaven – Almost Bare



Almost Bare cover map of Lower Shoalhaven sub-catchment

- Almost Bare areas compose a small proportion of the riparian zone within the subcatchment.