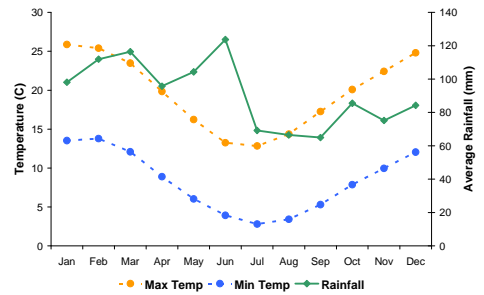


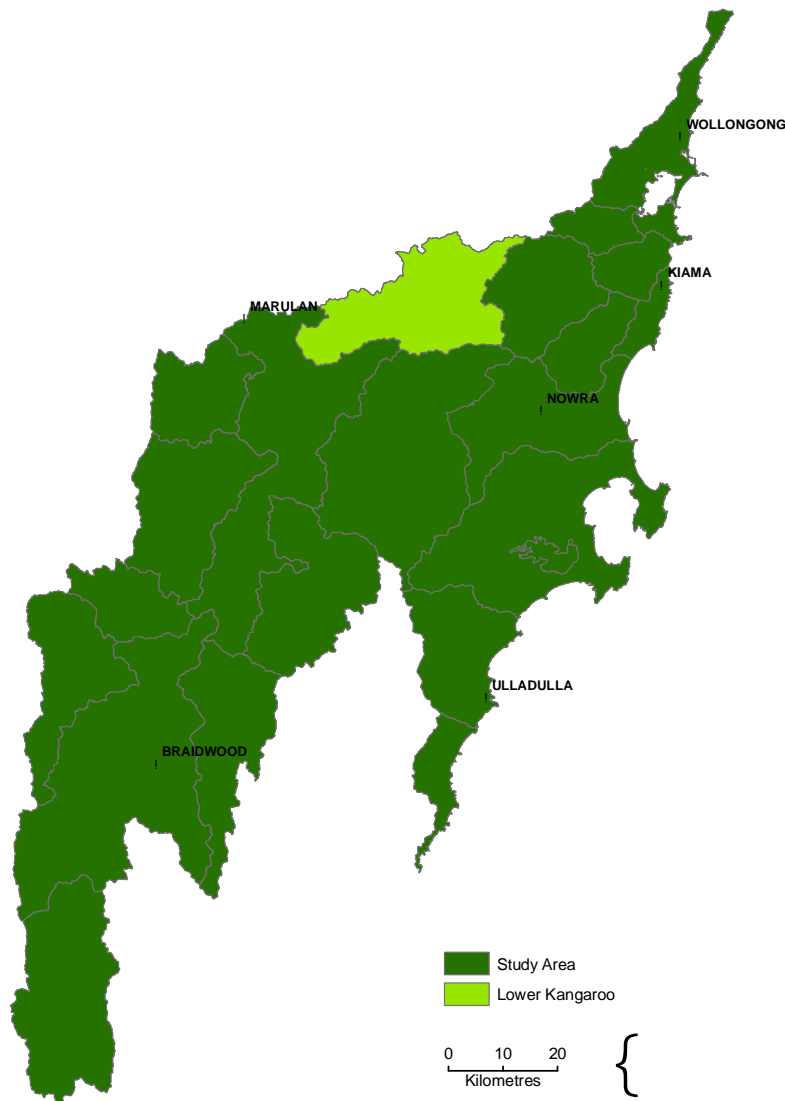
Report Card - Lower Kangaroo

General Information

<i>Sub-catchment size</i>	531 km ²
<i>Riparian landscape area</i>	25 km ²
<i>Average annual rainfall range</i>	809-1530 mm
<i>Median annual rainfall</i>	1110 mm
<i>Elevation range</i>	52-813 m
<i>Sub-catchment stream length</i>	1632 km
<i>Analysis area stream length</i>	895 km

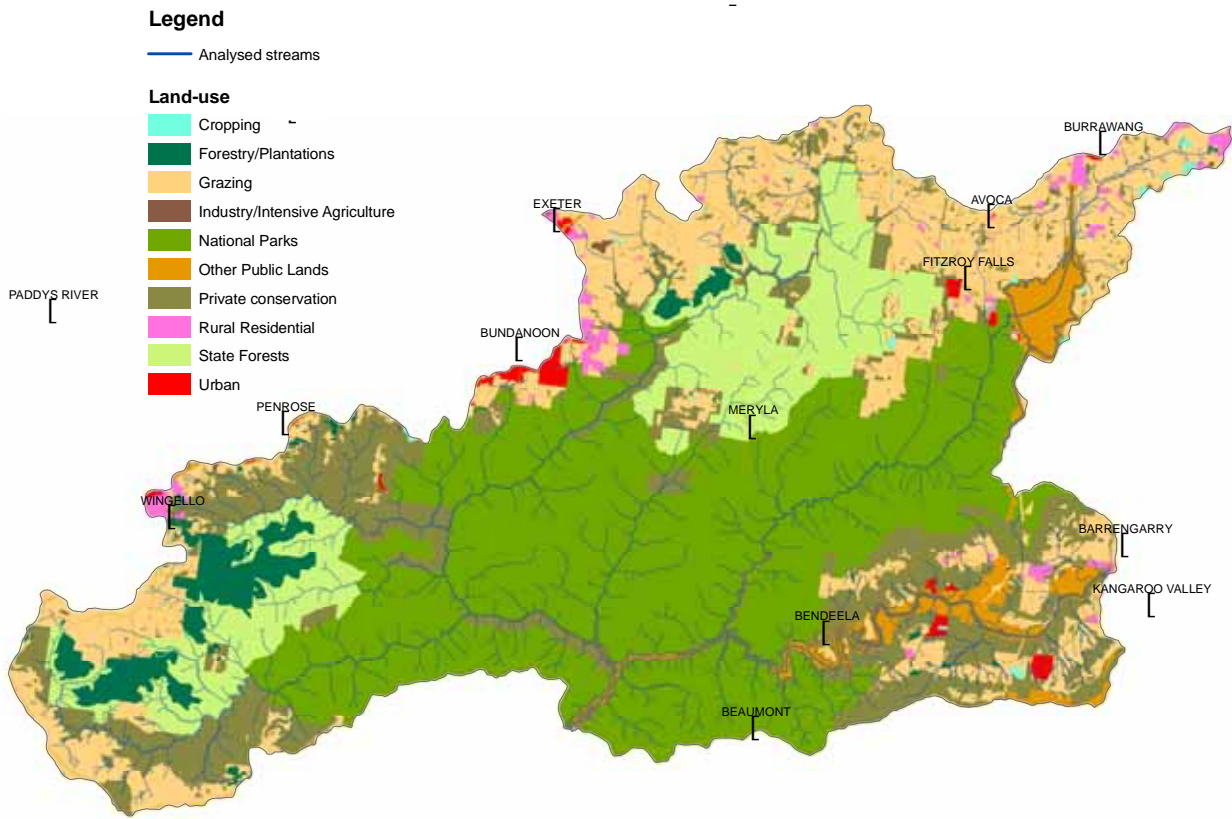


Average daily temperature and monthly rainfall data

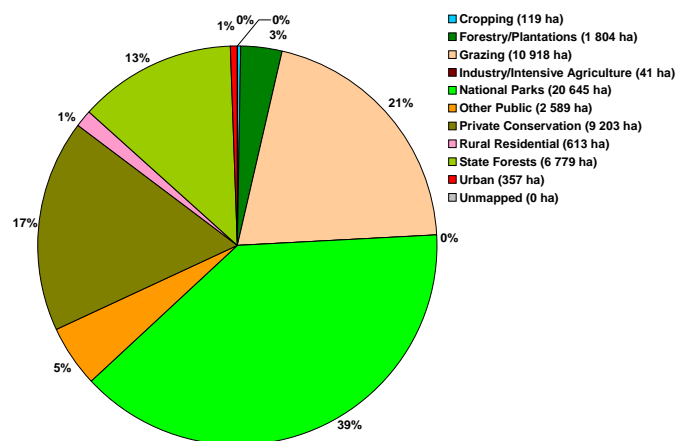


Location of Lower Kangaroo sub-catchment within study area

Land Use



Land use Map for Lower Kangaroo sub-catchment

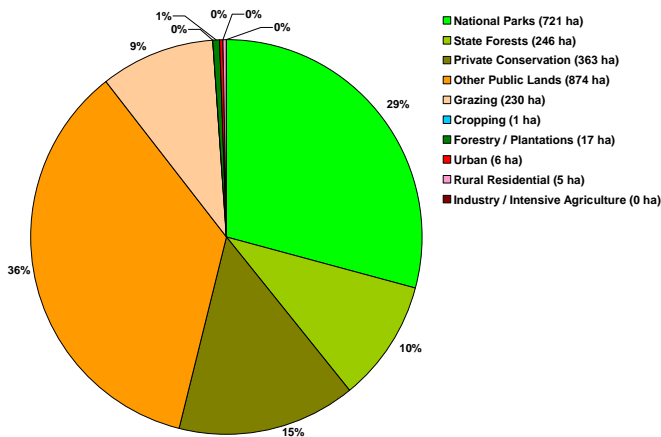


Land use within the sub-catchment

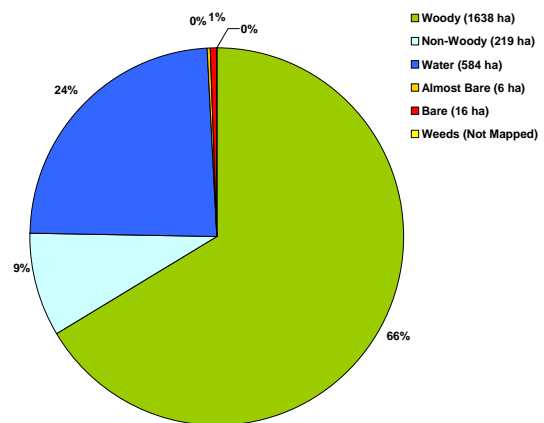
Report Card

Lower Kangaroo River Riparian Zone Summary

- Other Public Lands comprise the largest area within the riparian zone (36%) and approximately 65% of that area is under water and falls under crown waterways tenure.
- Woody riparian cover dominates the riparian area comprising 66% and approximately 58% of the woody riparian cover is located within National Parks and State Forests.
- Bare areas compose a small area proportion of the riparian zone (< 1%) and are located mainly on Other Public Lands.



Land use within the riparian zone



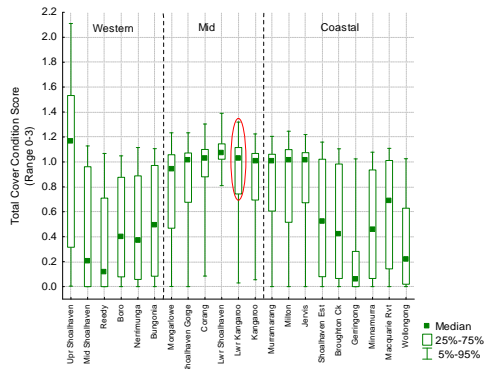
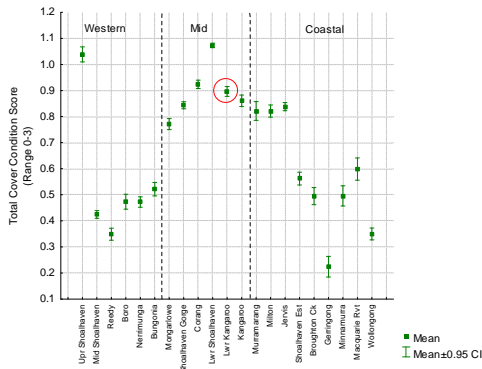
Land cover classes within the riparian zone

Cover Class by land use within the riparian zone

Cover Class	Landuse	Conservation		Other Conservation		Agriculture			Other		
		National Parks	State Forests	Private Conservation	Other Public Lands	Grazing	Cropping	Forestry / Plantations	Urban	Rural Residential	Industry / Intensive Agriculture
Woody	Area (ha)	710.7	243.2	354.9	225.1	83.4	0.3	14.1	3.3	3.1	0.0
	% of Cover Class	43.4%	14.8%	21.7%	13.7%	5.1%	0.0%	0.9%	0.2%	0.2%	0.0%
Non-Woody	Area (ha)	3.8	1.2	4.4	61.0	140.7	0.6	2.9	2.7	2.0	0.0
	% of Cover Class	1.7%	0.6%	2.0%	27.8%	64.2%	0.3%	1.3%	1.2%	0.9%	0.0%
Water	Area (ha)	5.2	1.1	3.0	570.7	3.6	0.0	0.0	0.1	0.0	0.0
	% of Cover Class	0.9%	0.2%	0.5%	97.8%	0.6%	0.0%	0.0%	0.0%	0.0%	0.0%
Almost Bare	Area (ha)	0.1	0.0	0.1	4.0	1.0	0.0	0.2	0.1	0.0	0.0
	% of Cover Class	1.8%	0.8%	1.8%	71.1%	18.3%	0.0%	3.4%	2.0%	0.8%	0.0%
Bare	Area (ha)	1.6	0.0	0.5	13.0	0.7	0.0	0.0	0.0	0.1	0.0
	% of Cover Class	10.1%	0.1%	3.2%	81.0%	4.3%	0.2%	0.3%	0.3%	0.4%	0.0%
Weeds	Area (ha)	N/A	N/A	N/A	N/A	N/A	N/A	N/A	N/A	N/A	N/A
	% of Cover Class	N/A	N/A	N/A	N/A	N/A	N/A	N/A	N/A	N/A	N/A

Report Card - Woody cover

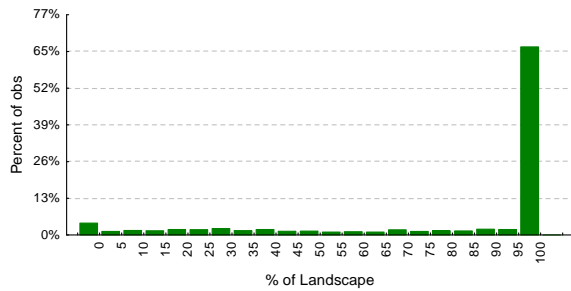
Lower Kangaroo River – Woody Cover



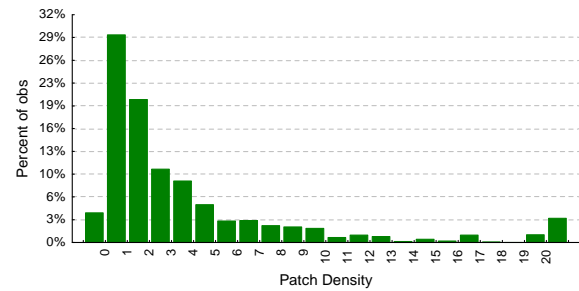
Overall Rank: 2/21
Zonal Rank: 2/6
(Ranks are based on Subcatchment Woody Cover Score)

Comparison of mean and median Woody cover scores across study area

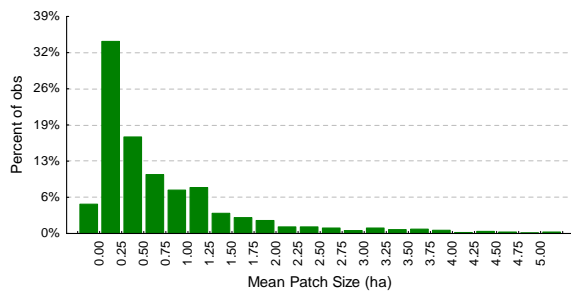
- The riparian zone in approximately 75% of the subcatchment tiles, where woody vegetation cover is present, consists of 50% or more woody cover, i.e. woody cover is very dominant in the riparian zones of these tiles.
- The relatively low values of the Patch Density graph indicate low fragmentation while the relatively high values of the Mean Patch Size graph indicate that the woody riparian cover is less grainy.



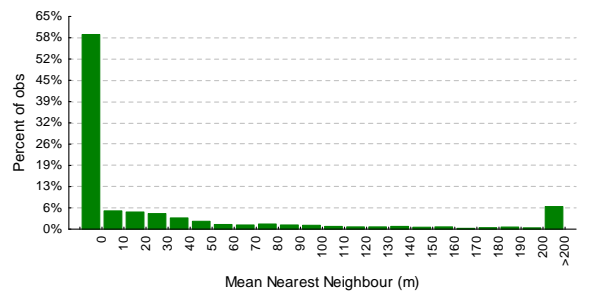
Distribution of the percentage of woody vegetation or **Percent of Landscape (PL)** within tiles in the riparian zones of the subcatchment.



Distribution of the woody vegetation Patch Density (ha) within tiles in the riparian zones.

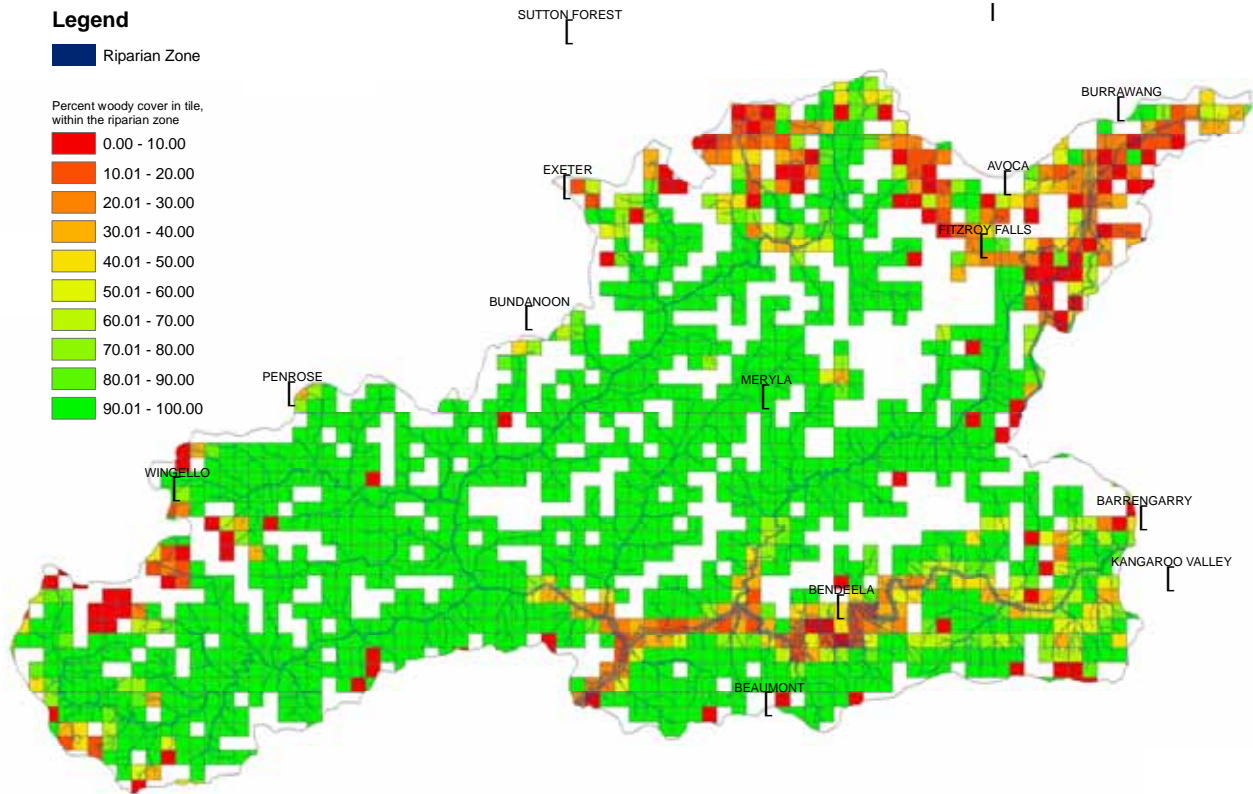


Distribution of mean patch size (ha) of woody vegetation in the riparian zones.



Distribution of the Mean Nearest Neighbour (Metres) distance between woody vegetation patches within tiles in the riparian zones.

Report Card - Woody cover



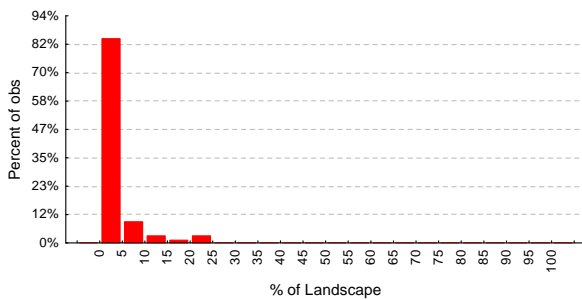
Woody cover map for Lower Kangaroo sub-catchment

- Most parts of the subcatchment have high proportions of intact woody cover within the riparian zones.
- Woody riparian cover is present in lower proportions and fragmented in areas where grazing is the main land use type in the northern and western parts of the subcatchment. Woody riparian cover also appears less dominant in the south, along/around the dam perimeter, owing to water dominating the riparian zone area.

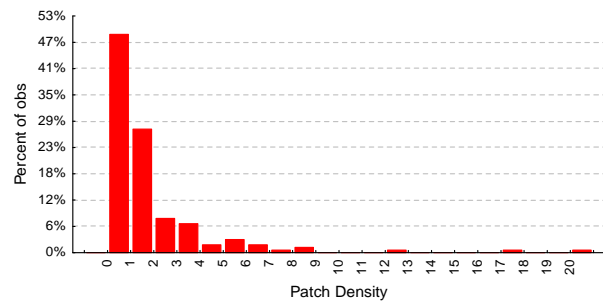
Report Card - Bare

Lower Kangaroo River – Bare

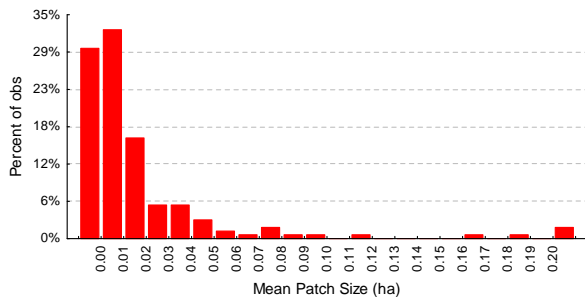
- The **% Landscape** graphs show that Bare areas generally do not dominate the riparian area in this subcatchment. Where the Bare areas are present within tiles, they occupy 5% or less of the riparian zone in approximately 83% of the tiles.
- Bare areas are generally small in size as indicated by the Mean Patch Size graph.



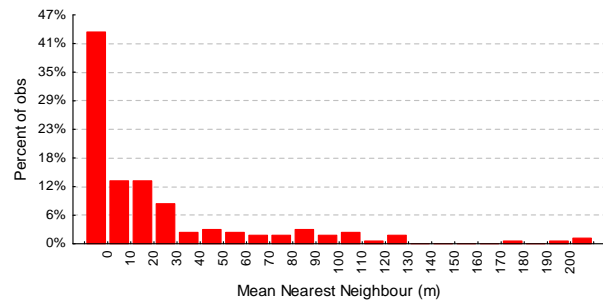
Distribution of the percentage of Bare area or Percent of Landscape (PL) within tiles in the riparian zones.



Distribution of the Bare Patch Density (PD) within tiles in the riparian zones.

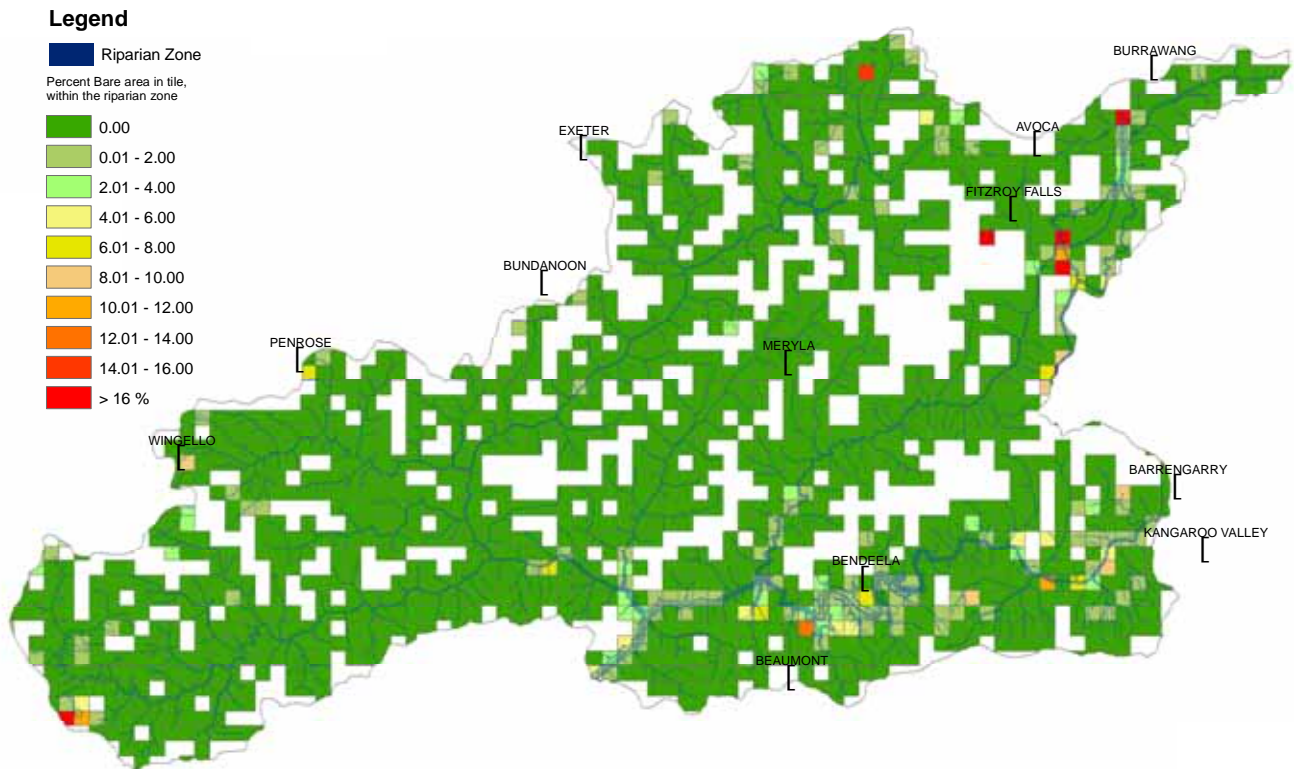


Distribution of mean patch size of Bare areas in the riparian zones.



Distribution of the Mean Nearest Neighbour (MNN) distance between Bare patches within tiles in the riparian zones.

Lower Kangaroo River – Bare



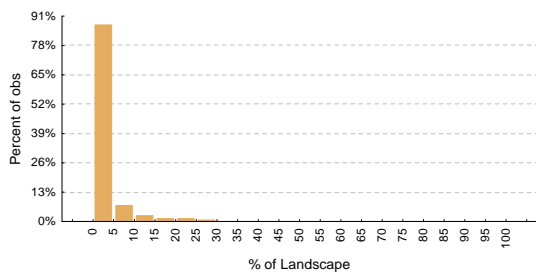
Bare cover map of Lower Kangaroo sub-catchment

- Bare areas in the subcatchment generally compose a small proportion of the riparian zone and appear concentrated in the south along the Kangaroo River and around the dam perimeter.

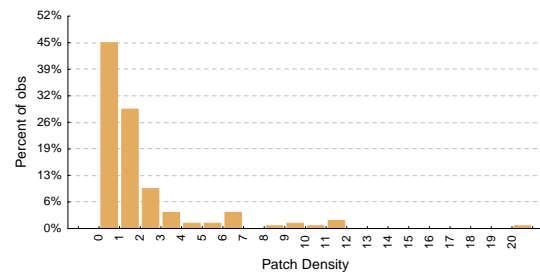
Report Card - Almost Bare

Lower Kangaroo River – Almost Bare

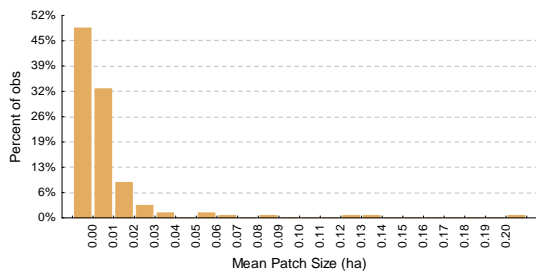
- The % **Landscape** graph shows that Almost Bare areas generally do not dominate the riparian area in this subcatchment. Where the Almost Bare areas are present within tiles, they occupy 5% or less of the riparian zone in approximately 88% of the tiles.
- Almost Bare areas are generally small in size as indicated by the Mean Patch Size graph.



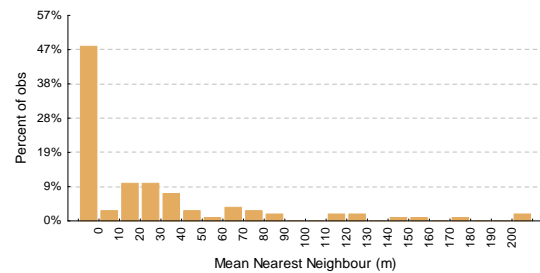
Distribution of the percentage of *Almost bare* area or **Percent of Landscape (PL)** within tiles in the riparian zones.



Distribution of the *Almost Bare* Patch Density (Ha) within tiles in the riparian zones.



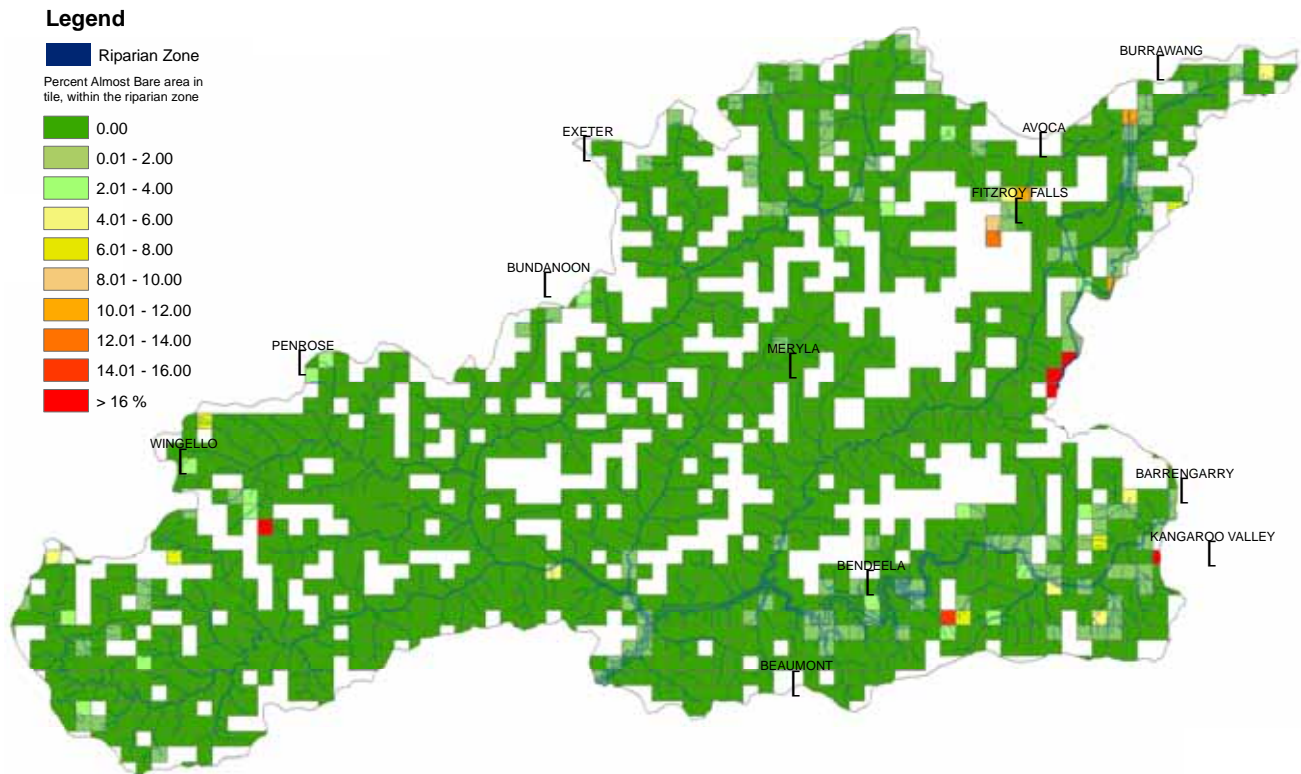
Distribution of mean patch size (Ha) of *Almost Bare* areas in the riparian zones.



Distribution of the Mean Nearest Neighbour (metres) distance between *Almost Bare* patches within tiles in the riparian zones.

Report Card - Almost Bare

Lower Kangaroo River – Almost Bare



Almost Bare cover map of Lower Kangaroo sub-catchment

- Almost Bare areas are not prevalent within the subcatchment and generally compose a small proportion of the riparian zone and appear concentrated in the south along the Kangaroo River and around the dam perimeter.