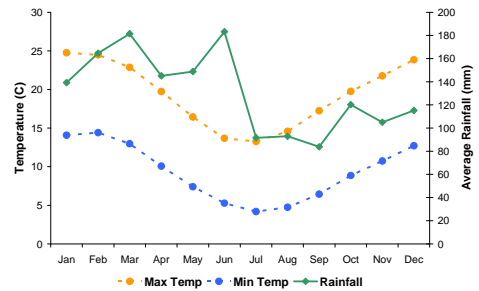


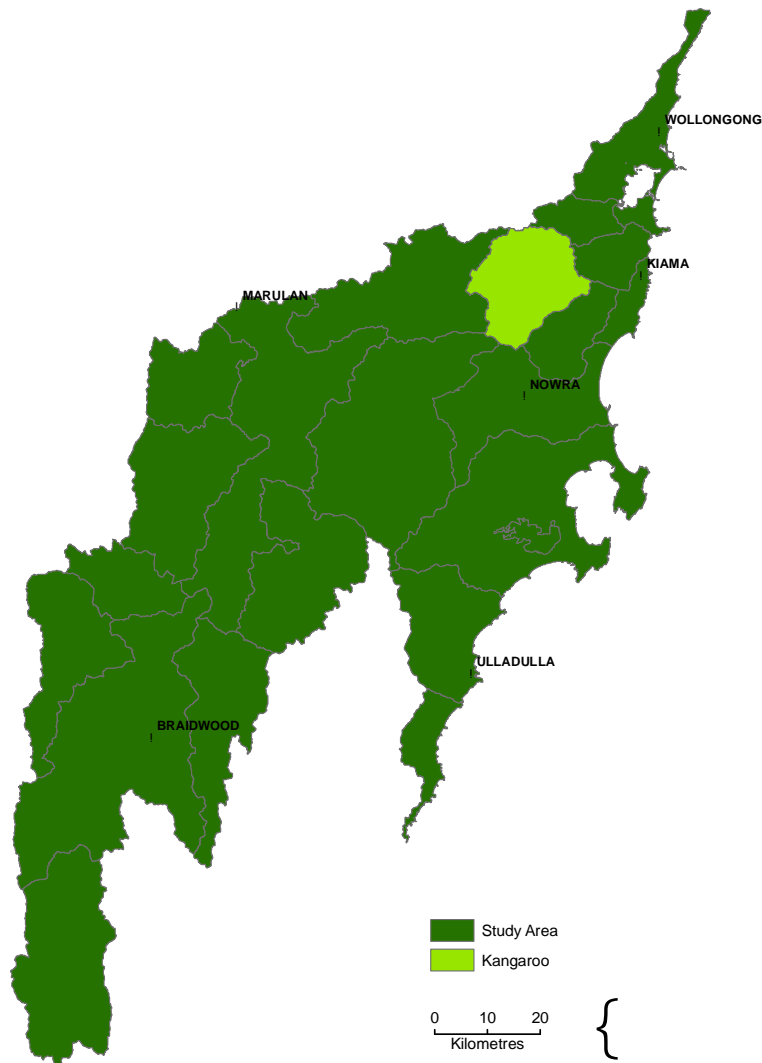
Report Card - Kangaroo River

General Information

<i>Sub-catchment size</i>	333 km ²
<i>Riparian landscape area</i>	12 km ²
<i>Average annual rainfall range</i>	1190-2010 mm
<i>Median annual rainfall</i>	1570 mm
<i>Elevation range</i>	55-803 m
<i>Sub-catchment stream length</i>	859 km
<i>Analysis area stream length</i>	529 km

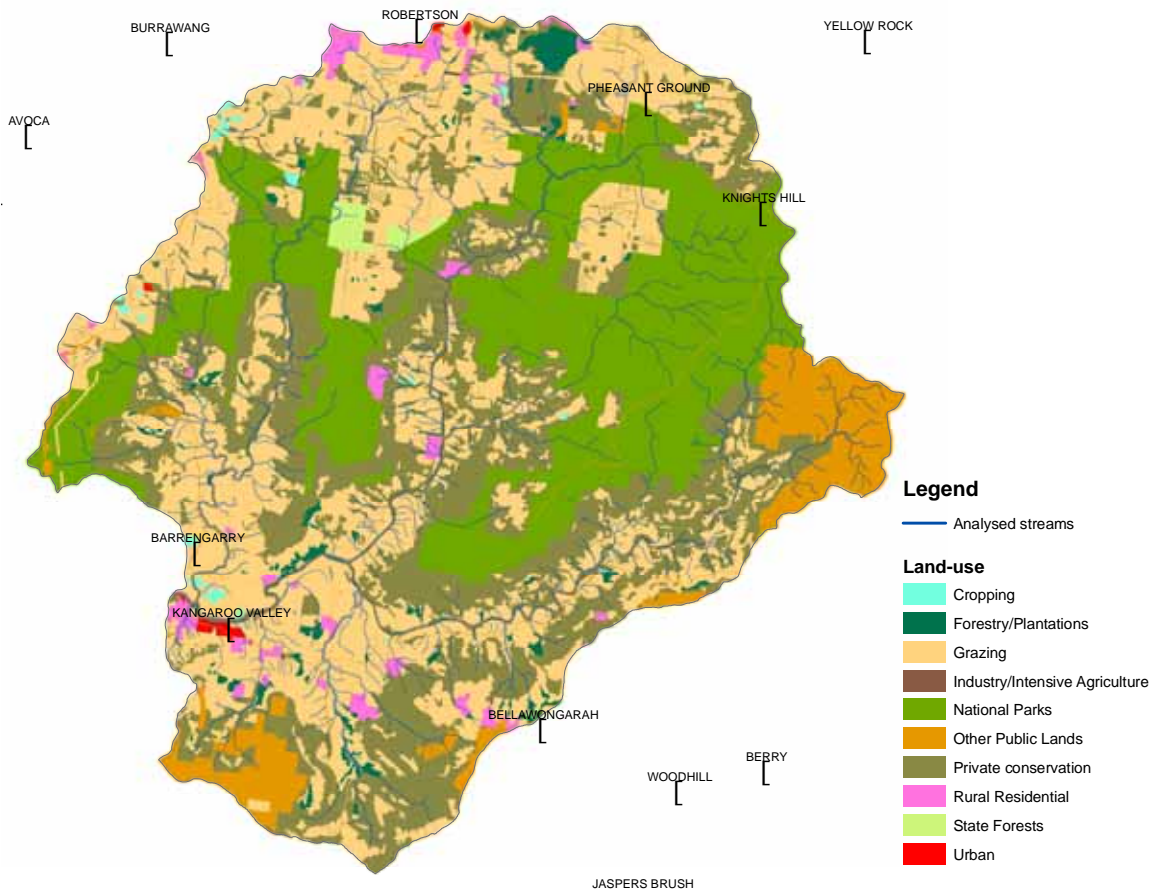


Average Daily temperature and monthly rainfall data

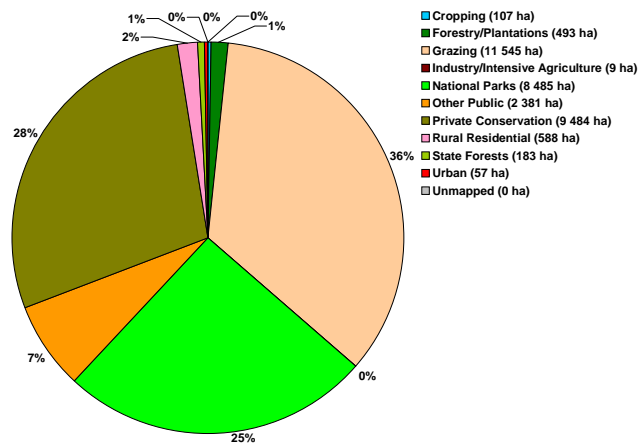


Location of Kangaroo River sub-catchment within study area

Land Use



Land use Map for Kangaroo River sub-catchment

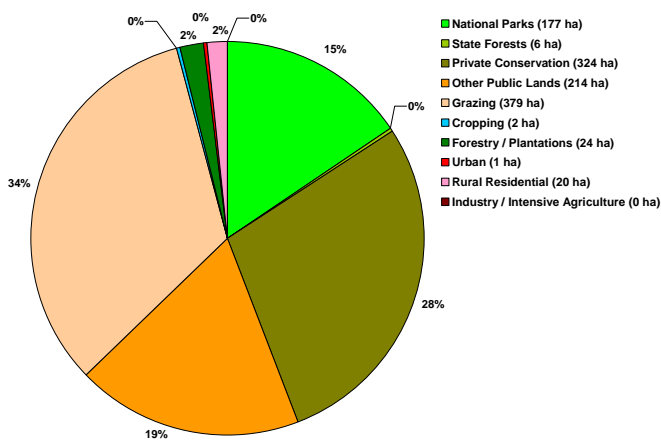


Land use within the sub-catchment

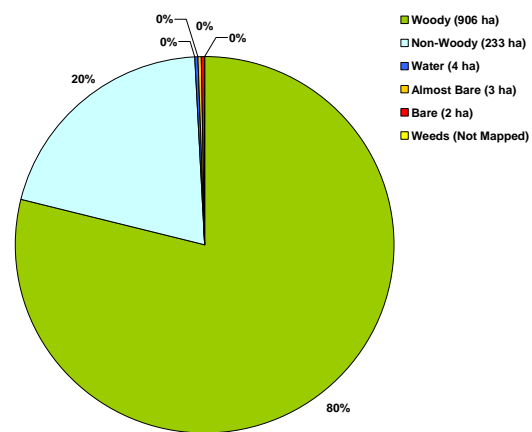
Report Card

Kangaroo River Sub-catchment Riparian Zone Summary

- Grazing and Private Conservation comprise the largest areas within the riparian zone (34 and 28% respectively).
- Woody riparian cover dominates the riparian area comprising 80%. Approximately 20% of the woody riparian area is within the National Parks and State Forests.
- Bare areas are limited in extent within the sub-catchment.



Land use within the riparian zone



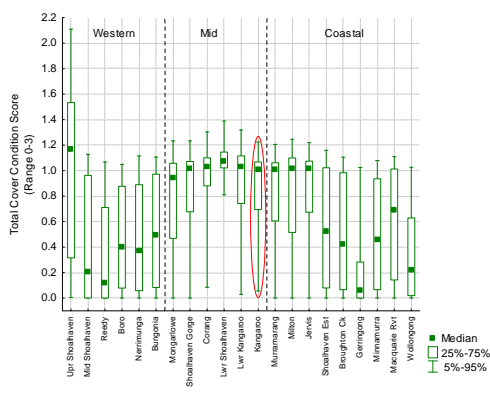
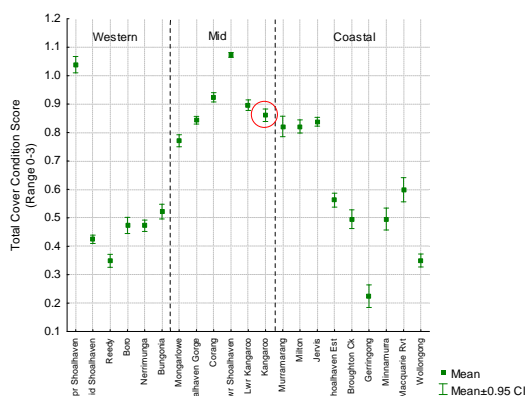
Land cover classes within the riparian zone

Cover Class by land use within the riparian zone

Cover Class	Landuse	Conservation		Other Conservation		Agriculture			Other		
		National Parks	State Forests	Private Conservation	Other Public Lands	Grazing	Cropping	Forestry / Plantations	Urban	Rural Residential	Industry / Intensive Agriculture
Woody	Area (ha)	173.68	5.61	317.49	202.66	170.74	0.38	20.13	0.58	14.33	0.09
	% of Cover Class	19.2%	0.6%	35.1%	22.4%	18.9%	0.0%	2.2%	0.1%	1.6%	0.0%
Non-Woody	Area (ha)	2.69	0.00	5.41	9.79	203.52	1.25	4.13	0.66	5.60	0.08
	% of Cover Class	1.2%	0.0%	2.3%	4.2%	87.3%	0.5%	1.8%	0.3%	2.4%	0.0%
Water	Area (ha)	0.23	0.00	0.52	1.03	2.03	0.05	0.05	0.00	0.06	0.00
	% of Cover Class	5.7%	0.0%	13.1%	26.1%	51.3%	1.1%	1.3%	0.0%	1.4%	0.0%
Almost Bare	Area (ha)	0.77	0.00	0.13	0.29	1.43	0.04	0.00	0.09	0.10	0.00
	% of Cover Class	27.1%	0.0%	4.7%	10.1%	50.3%	1.4%	0.0%	3.0%	3.4%	0.0%
Bare	Area (ha)	0.02	0.00	0.07	0.64	1.10	0.01	0.00	0.09	0.06	0.00
	% of Cover Class	0.8%	0.0%	3.7%	32.2%	55.3%	0.3%	0.0%	4.7%	3.1%	0.0%
Weeds	Area (ha)	N/A	N/A	N/A	N/A	N/A	N/A	N/A	N/A	N/A	N/A
	% of Cover Class	N/A	N/A	N/A	N/A	N/A	N/A	N/A	N/A	N/A	N/A

Report Card - Woody cover

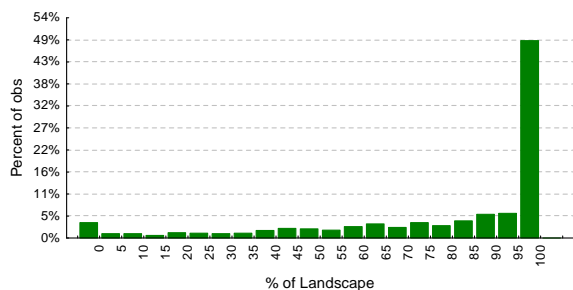
Kangaroo River – Woody Cover



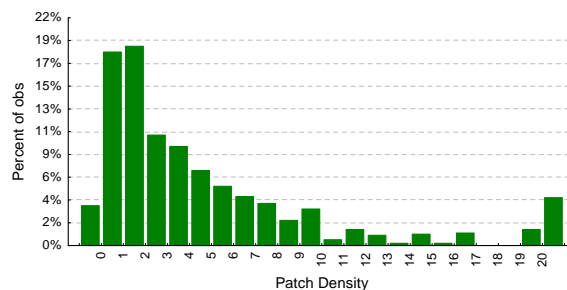
Overall Rank: 7/21
Zonal Rank: 5/6
 (Ranks are based on Subcatchment Woody Cover Score)

Comparison of mean and median Woody cover scores across study area

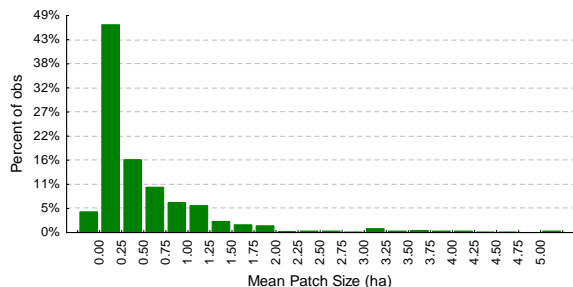
- The riparian zone in approximately 76% of the sub-catchment tiles, where woody vegetation cover is present, consists of 50% or more woody cover, i.e. woody cover is very dominant in the riparian zones of these tiles.
- The Patch Density graph indicates moderate fragmentation and the low values of the Mean Patch Size graph indicate the graininess of the woody riparian cover.



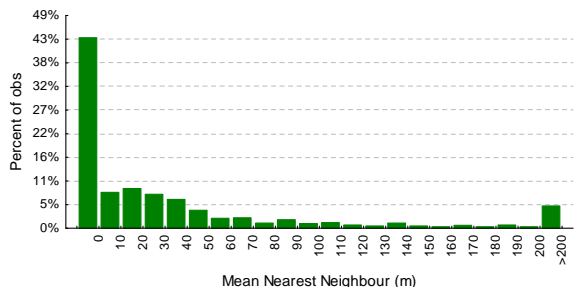
Distribution of the percentage of woody vegetation or **Percent of Landscape (PL)** within tiles in the riparian zones of the sub-catchment.



Distribution of the woody vegetation Patch Density (ha) within tiles in the riparian zones.

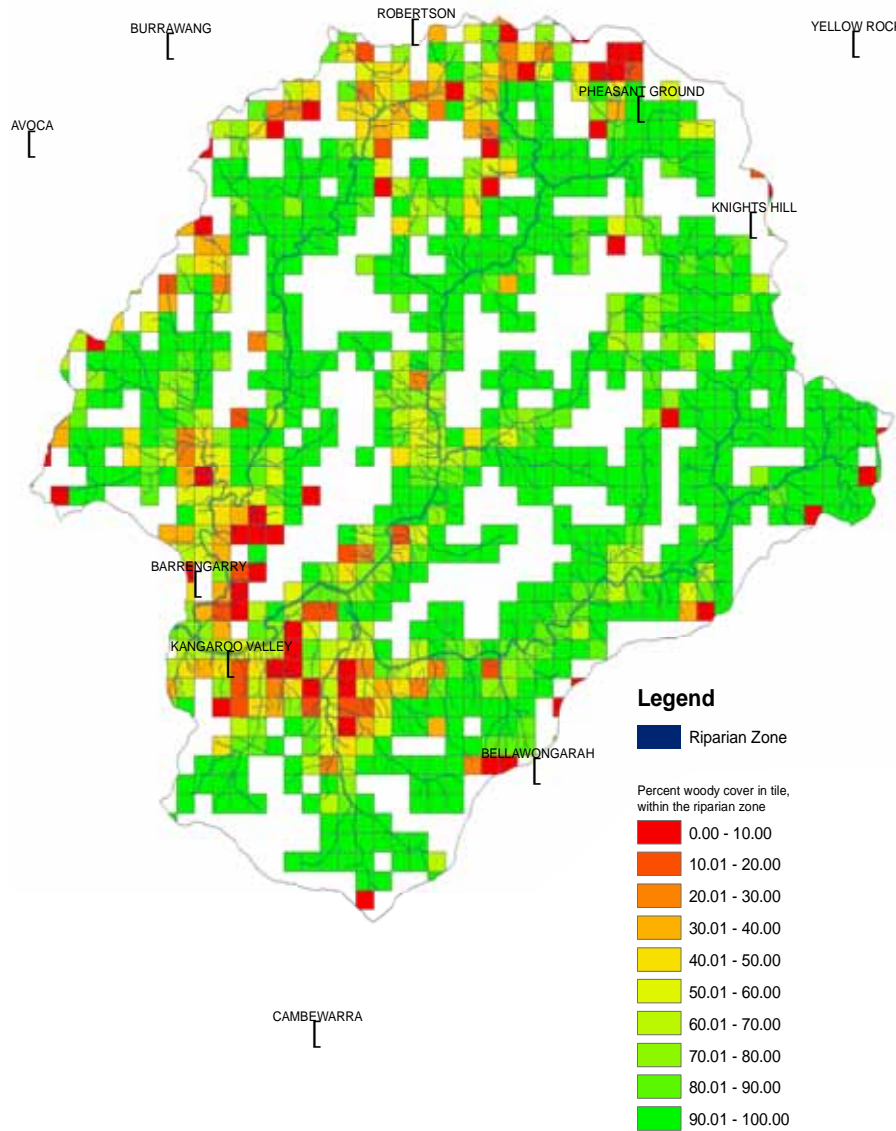


Distribution of mean patch size (ha) of woody vegetation in the riparian zones.



Distribution of the Mean Nearest Neighbour (Metres) distance between woody vegetation patches within tiles in the riparian zones.

Report Card - Woody cover

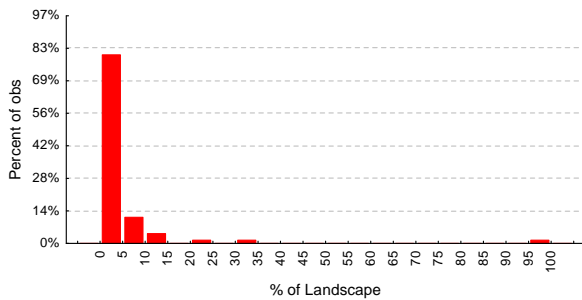


Woody cover map for Kangaroo River sub-catchment

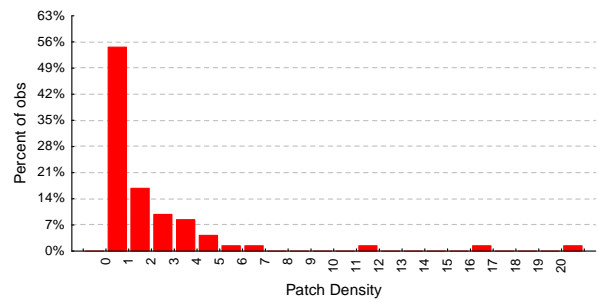
- Woody riparian cover exists in high proportions in the eastern and central parts of the sub-catchment where National Parks are the predominant land use type.
- Woody riparian cover is less dominant and fragmented in the northern and south western parts of the sub-catchment where grazing the main land use type.

Kangaroo River – Bare

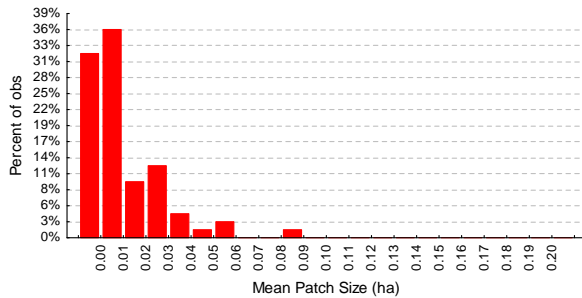
- The **% Landscape** graph shows that Bare areas generally do not dominate the riparian area in this sub-catchment. Where the Bare areas are present within tiles, they occupy 5% or less of the riparian zone in approximately 80% of the tiles.
- Bare areas are generally small as indicated by the Mean Patch Size graph.



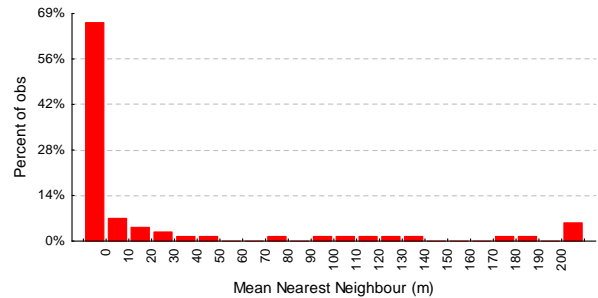
Distribution of the percentage of Bare area or Percent of Landscape (PL) within tiles in the riparian zones.



Distribution of the Bare Patch Density (PD) within tiles in the riparian zones.

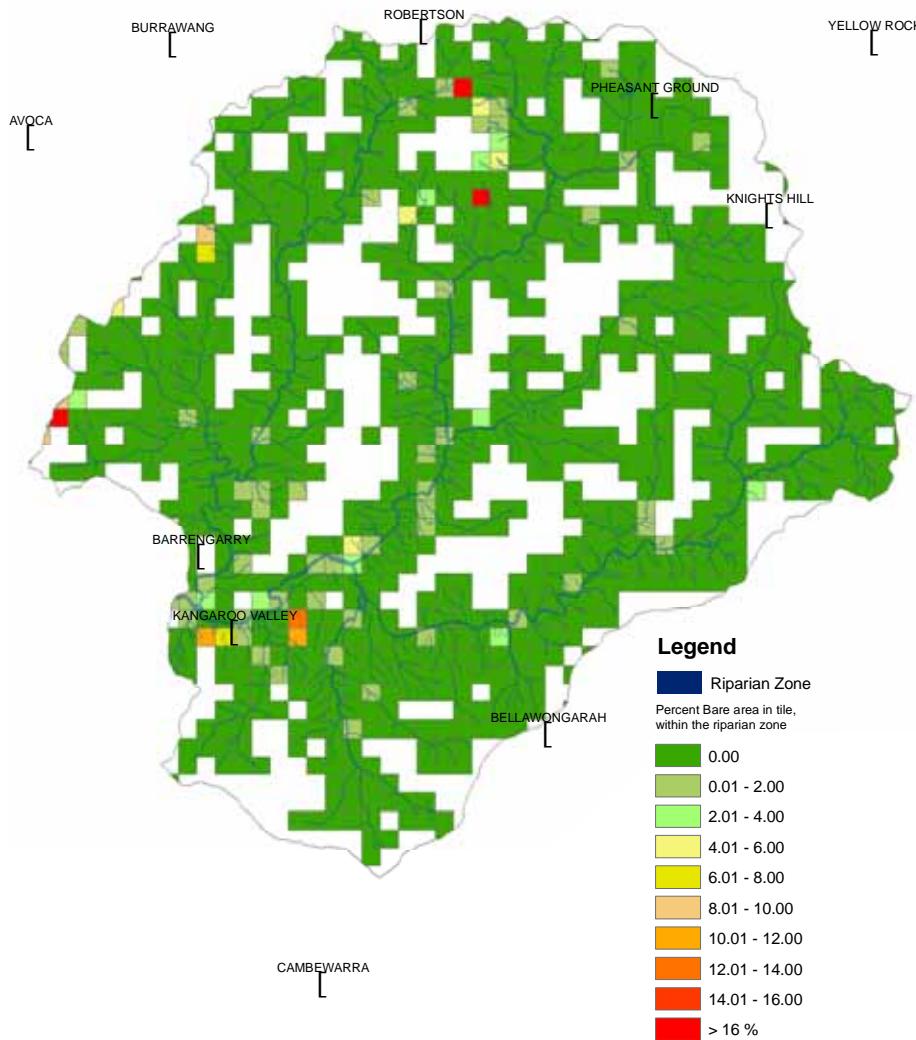


Distribution of mean patch size of Bare areas in the riparian zones.



Distribution of the Mean Nearest Neighbour (MNN) distance between Bare patches within tiles in the riparian zones.

Kangaroo River – Bare



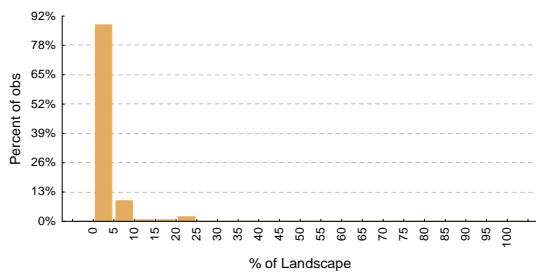
Bare cover map of Kangaroo River sub-catchment

- Bare areas in the sub-catchment are isolated and generally compose a small proportion of the riparian zone.
- Bare areas exist mainly where Grazing is the main land use type.

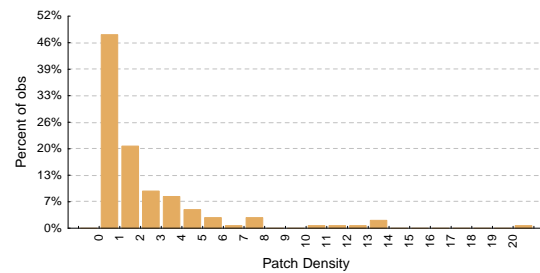
Report Card - Almost Bare

Kangaroo River – Almost Bare

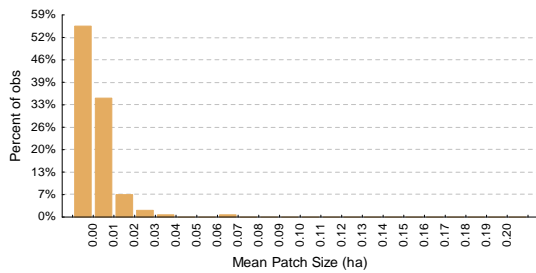
- The **% Landscape** graph shows that Almost Bare areas generally do not dominate the riparian area in this sub-catchment. Where the Almost Bare areas are present within tiles, they occupy 5% or less of the riparian zone in approximately 88% of the tiles.
- Almost Bare areas are generally small as indicated by the Mean Patch Size graph.



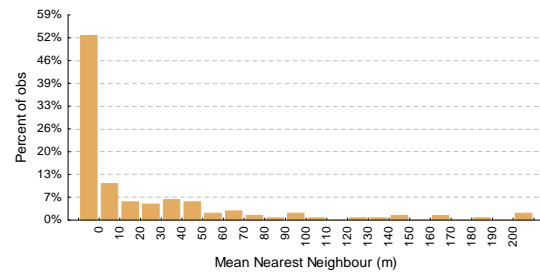
Distribution of the percentage of *Almost bare* area or **Percent of Landscape (PL)** within tiles in the riparian zones.



Distribution of the *Almost Bare* Patch Density (Ha) within tiles in the riparian zones.



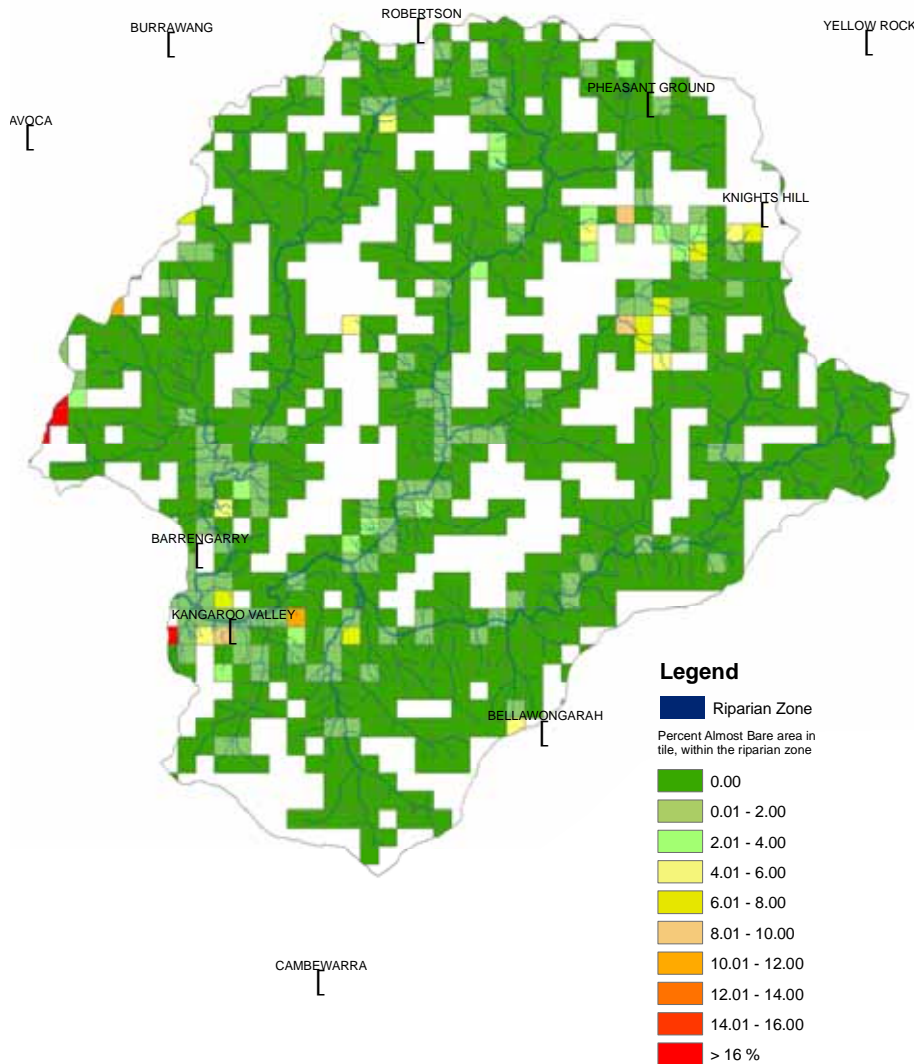
Distribution of mean patch size (Ha) of *Almost Bare* areas in the riparian zones.



Distribution of the Mean Nearest Neighbour (metres) distance between *Almost Bare* patches within tiles in the riparian zones.

Report Card - Almost Bare

Kangaroo River – Almost Bare



Almost Bare cover map of Kangaroo River sub-catchment

- Almost Bare areas in the sub-catchment generally compose a small proportion of the riparian zone and exist mainly on Grazing the land use type.