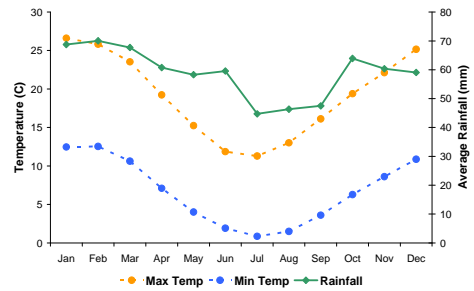


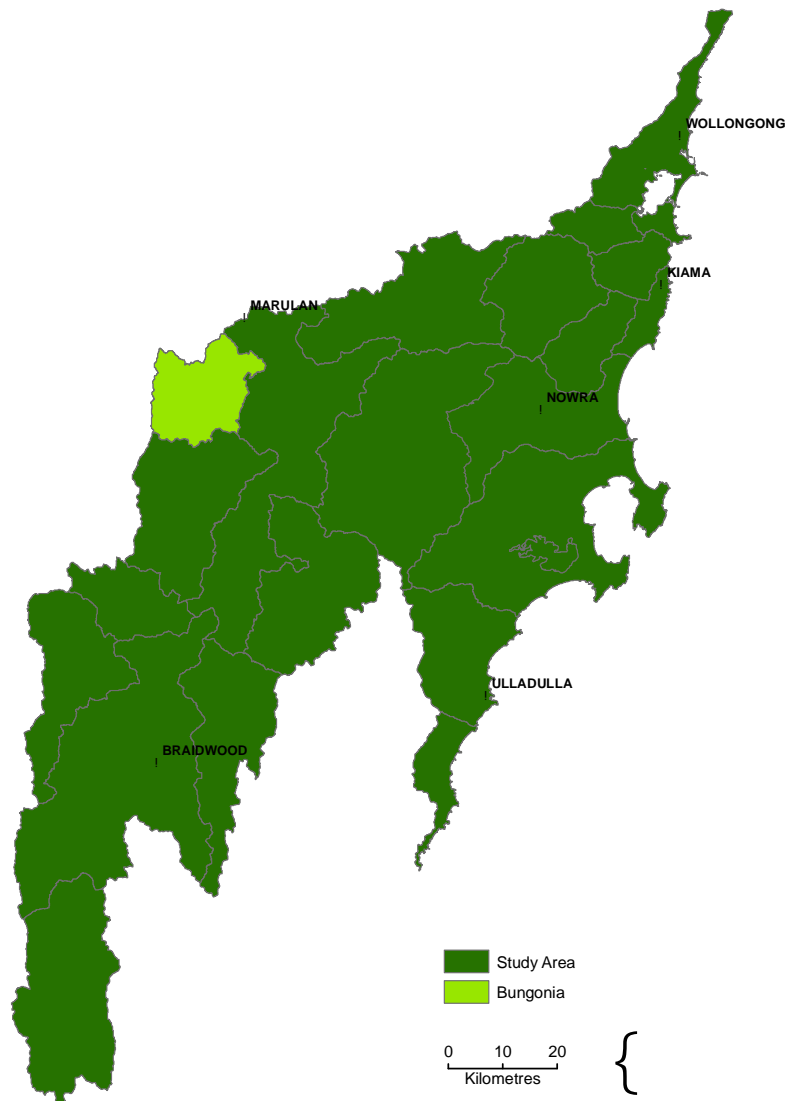
Reporting Card - Bungonia Creek

General Information

<i>Sub-catchment size</i>	275 km ²
<i>Riparian landscape area</i>	13 km ²
<i>Average annual rainfall range</i>	668-830 mm
<i>Median annual rainfall</i>	704 mm
<i>Elevation range</i>	121-862 m
<i>Sub-catchment stream length</i>	1212 km
<i>Analysis area stream length</i>	659 km



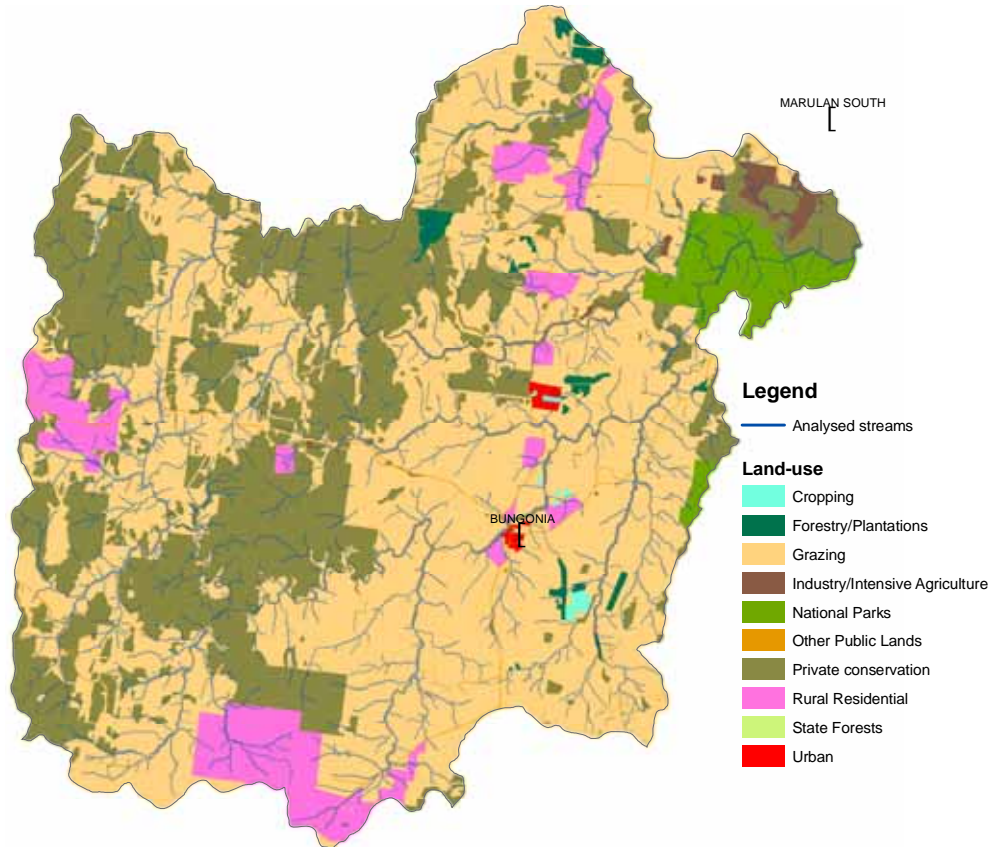
Average daily temperature and monthly rainfall data



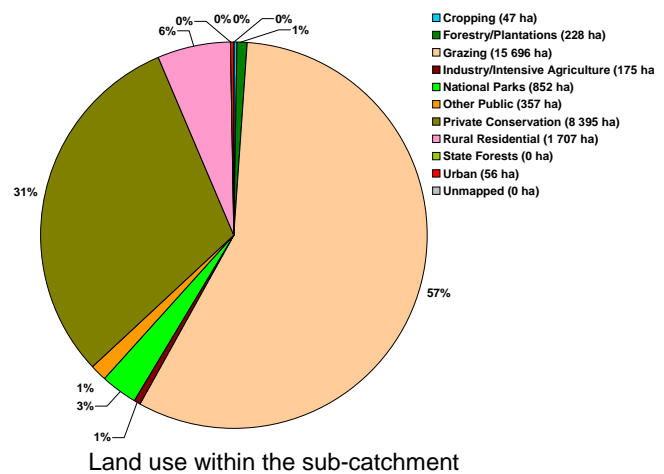
Location of Bungonia sub-catchment within study area

Report Card

Land Use



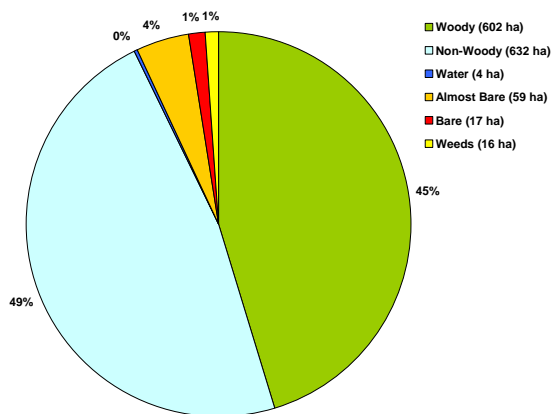
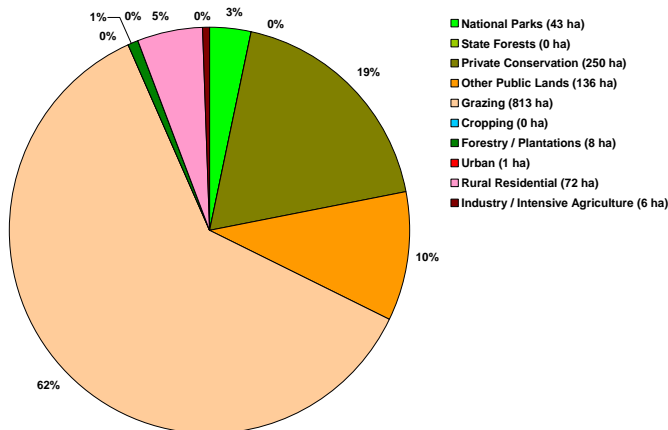
Land use map for Bungonia sub-catchment



Land use within the sub-catchment

Bungonia Creek Riparian Zone Summary

- Grazing comprises the largest area within the riparian zone (62%).
- Approximately 45% of the riparian area is covered by woody vegetation. About 39% of the woody riparian cover occurs on the private conservation land use type and a similar amount (38%) occurs on the Grazing land use type.
- Bare and Almost Bare areas compose small proportions (1% and 4% respectively) of the riparian area and exist predominantly on the grazing land use type.
- Weeds (mostly Willows) compose a small proportion of the riparian area (1%) and exist predominantly within the Other Public Lands and Grazing land use types.



Land use within the riparian zone

Land cover classes within the riparian zone

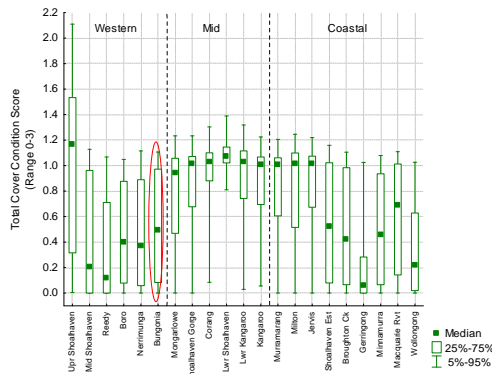
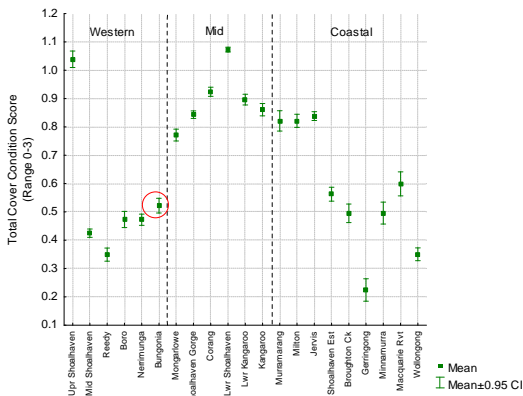
Cover Class by land use within the riparian zone

Report Card

Cover Class	Landuse	Conservation		Other Conservation		Agriculture			Other		
		National Parks	State Forests	Private Conservation	Other Public Lands	Grazing	Cropping	Forestry / Plantations	Urban	Rural Residential	Industry / Intensive Agriculture
Woody	Area (ha)	38.9	0.0	233.8	59.2	227.8	0.0	4.4	0.2	36.4	1.4
	% of Cover Class	6.5%	0.0%	38.8%	9.8%	37.8%	0.0%	0.7%	0.0%	6.0%	0.2%
Non-Woody	Area (ha)	3.7	0.0	14.2	62.7	515.1	0.1	2.6	0.5	32.1	0.8
	% of Cover Class	0.6%	0.0%	2.3%	9.9%	81.5%	0.0%	0.4%	0.1%	5.1%	0.1%
Water	Area (ha)	0.2	0.0	0.0	0.1	2.9	0.0	0.0	0.0	0.3	0.0
	% of Cover Class	5.2%	0.0%	1.3%	4.1%	79.9%	0.0%	0.0%	0.0%	9.1%	0.3%
Almost Bare	Area (ha)	0.1	0.0	1.1	5.0	49.3	0.0	0.3	0.1	1.7	1.5
	% of Cover Class	0.1%	0.0%	1.8%	8.4%	83.5%	0.0%	0.5%	0.2%	2.9%	2.5%
Bare	Area (ha)	0.2	0.0	1.1	2.1	9.4	0.0	0.2	0.1	1.8	2.3
	% of Cover Class	1.0%	0.0%	6.4%	12.5%	54.7%	0.0%	1.0%	0.4%	10.6%	13.5%
Weeds	Area (ha)	0.0	0.0	0.1	7.3	8.7	0.0	0.0	0.0	0.1	0.0
	% of Cover Class	0.0%	0.0%	0.9%	45.0%	53.6%	0.0%	0.0%	0.0%	0.5%	0.0%

Reporting Card - Woody cover

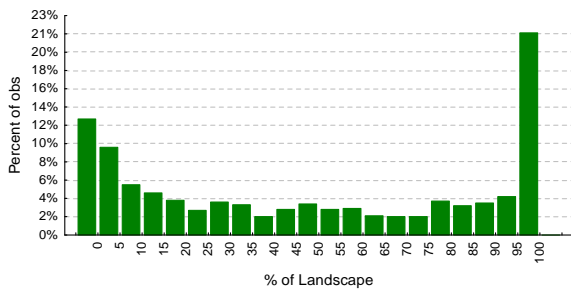
Bungonia – Woody Cover



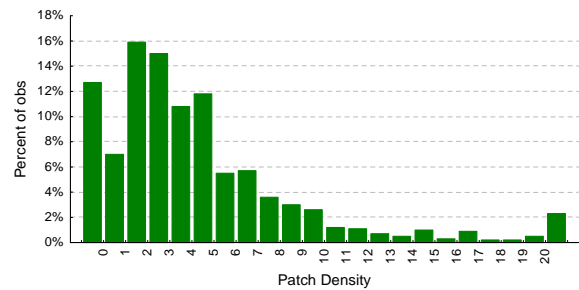
Overall Rank:15/21
Zonal Rank: 4/6
(Ranks are based on Sub-catchment Woody Cover Score)

Comparison of mean and median Woody cover scores across study area.

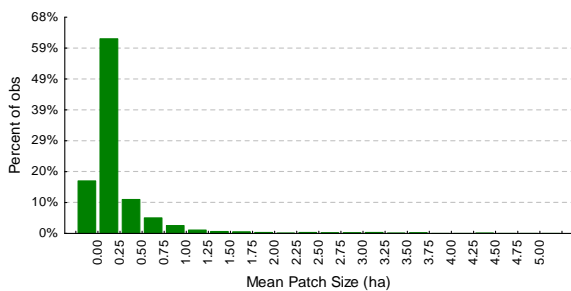
- The riparian zone in approximately 48% of the sub-catchment tiles, where woody vegetation cover is present, consists of between 50 and 100% woody cover, i.e. woody cover is very dominant in the riparian zones of these tiles. However, woody riparian cover is much less dominant in 37% of the sub-catchment tiles, where it consists of 20% or less of the riparian area within a tile.
- The woody riparian vegetation cover Patch density graph indicates moderate fragmentation of the woody riparian cover
- The low values of Mean Patch Size graph indicate the graininess of the woody riparian cover.



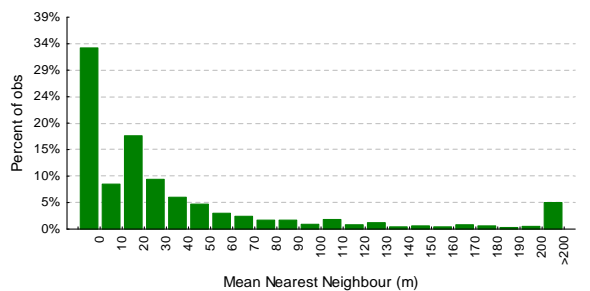
Distribution of the percentage of woody vegetation or **Percent of Landscape (PL)** within tiles in the riparian zones of the sub-catchment.



Distribution of the woody vegetation Patch Density (ha) within tiles in the riparian zones.

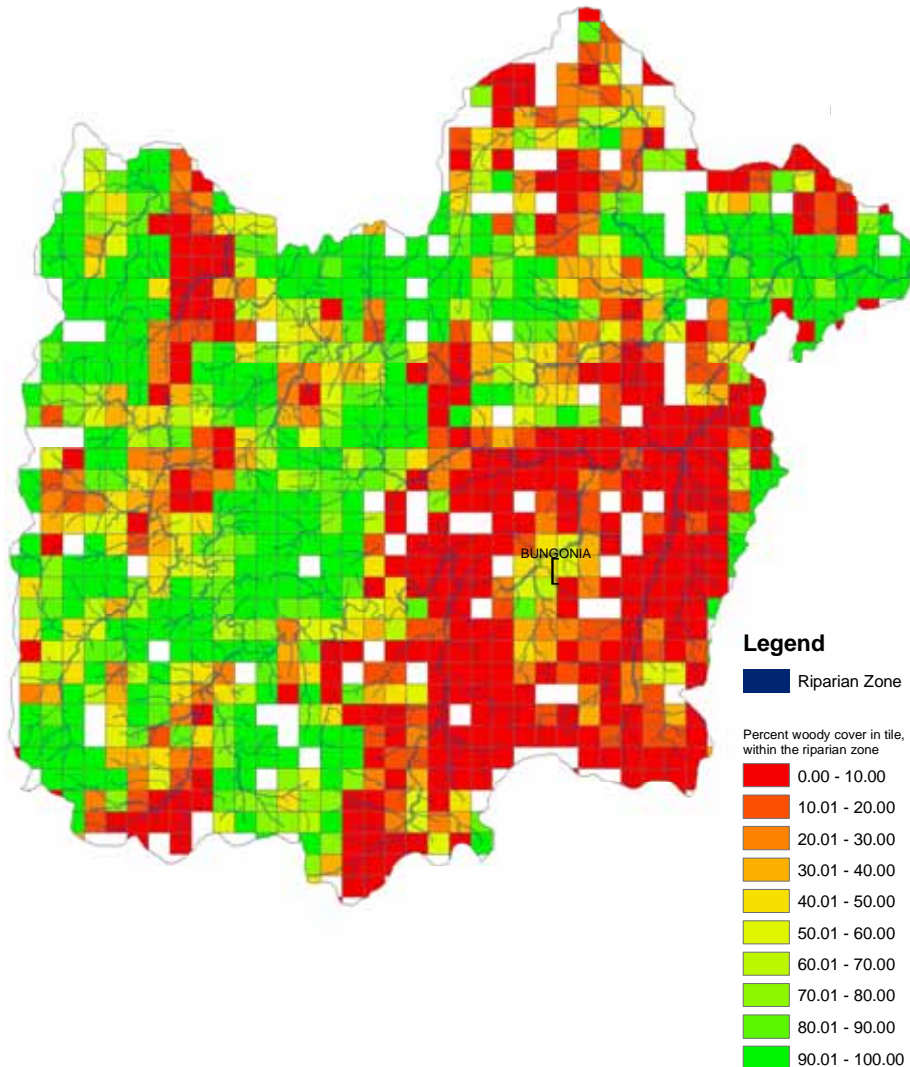


Distribution of mean patch size (ha) of woody vegetation in the riparian zones.



Distribution of the Mean Nearest Neighbour (Metres) distance between woody vegetation patches within tiles in the riparian zones.

Reporting Card - Woody cover



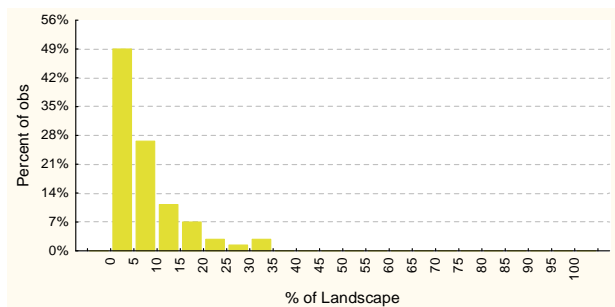
Woody cover map of Bungonia sub-catchment

- Woody riparian cover is fragmented and less dominant on the Grazing land use type which is concentrated on the south eastern and north eastern parts of sub-catchment. Fragmented and less dominant woody riparian cover also occurs on grazing areas in the western parts of the sub-catchment
- Woody riparian cover is largely intact and dominant in the corridors of the Private Conservation land use type that run from the west and almost link with the National Park to the north east of the sub-catchment.

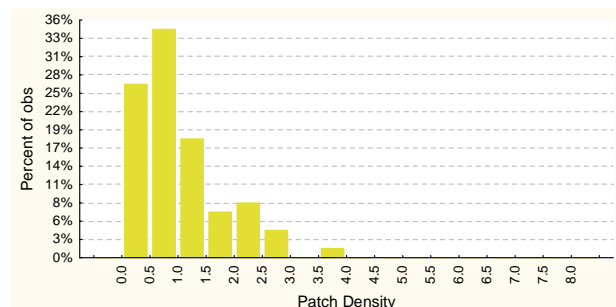
Reporting Card - Weeds (Willows)

Bungonia – Weeds (Willows)

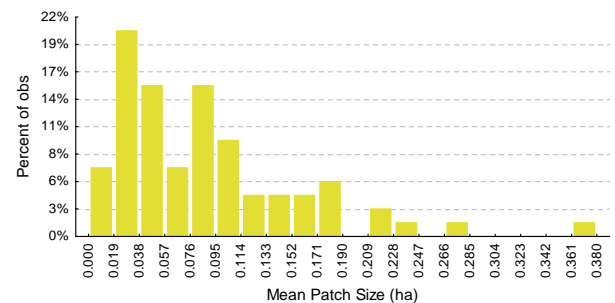
- The **% of Landscape** graph indicates that weeds generally do not dominate the riparian zone in the sub-catchment. In approximately 49% of the tiles where the weeds (mostly Willows) exist, they occupy 5% or less of the riparian zone.
- Weeds generally exist in relatively small patch sizes. In approximately 67% the sub-catchment tiles where weeds exist, the weeds Mean Patch Size is approximately 0.1 ha or less.



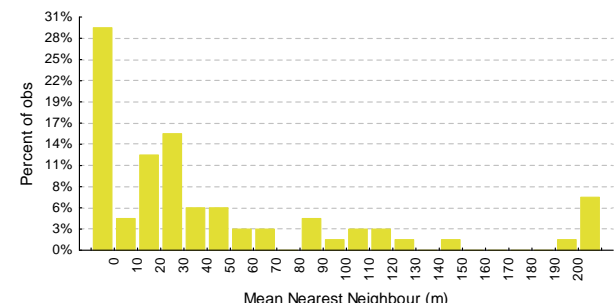
Distribution of the percentage of Weeds or **Percent of Landscape (PL)** within tiles in the riparian zone.



Distribution of the Weeds Patch Density (PD) within tiles in the riparian zones.



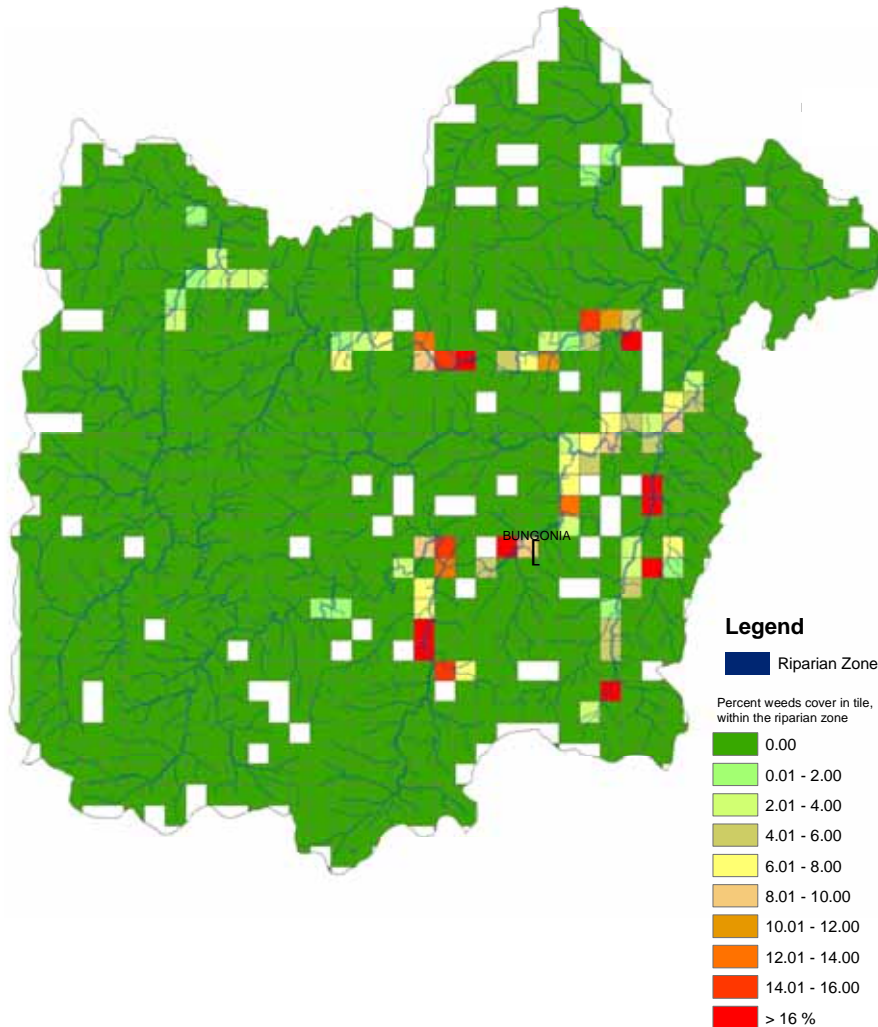
Distribution of mean patch size (ha) of weeds in the riparian zones.



Distribution of the Mean Nearest Neighbour (Metres) distance between Weeds patches within tiles in the riparian zones.

Reporting Card - Weeds (Willows)

Bungonia – Weeds (Willows)

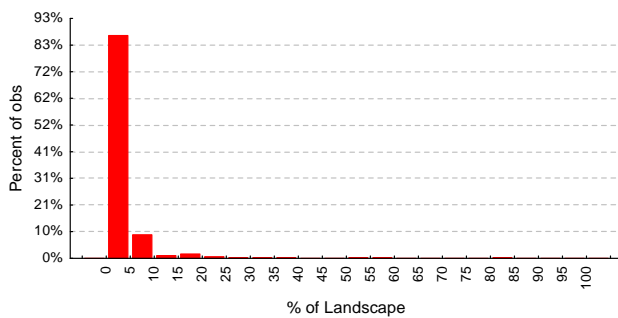


Weeds cover map of Bungonia sub-catchment

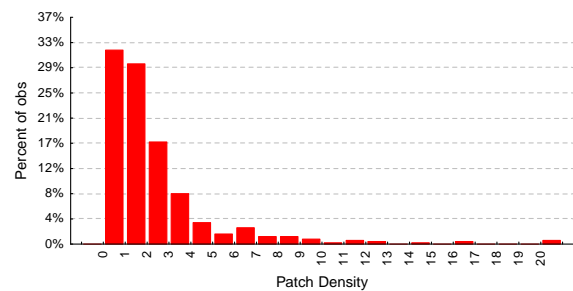
- The Weeds (mainly Willows) appear to be relatively localised in distribution in this sub-catchment. Riparian zones with the highest proportion of Weeds are located in the central eastern parts of the sub-catchment.

Bungonia – Bare

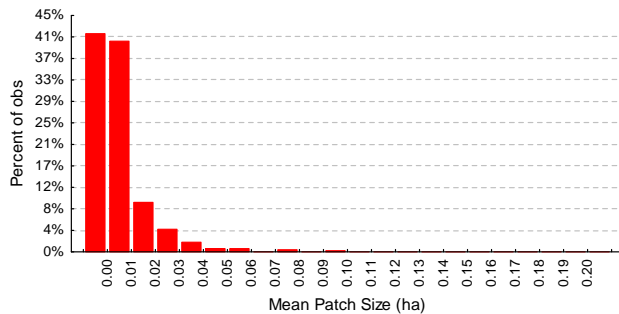
- The **% Landscape** graph shows that Bare areas generally do not dominate the riparian area in this sub-catchment. Where the Bare areas are present within tiles, they occupy 5% or less of the riparian zone in approximately 86% of the tiles.
- Bare areas are generally small as indicated by the Mean Patch Size graph.



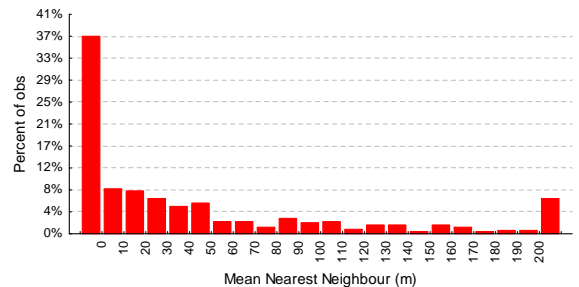
Distribution of the percentage of *Bare* area or **Percent of Landscape (PL)** within tiles in the riparian zones.



Distribution of the *Bare* Patch Density (PD) within tiles in the riparian zones.

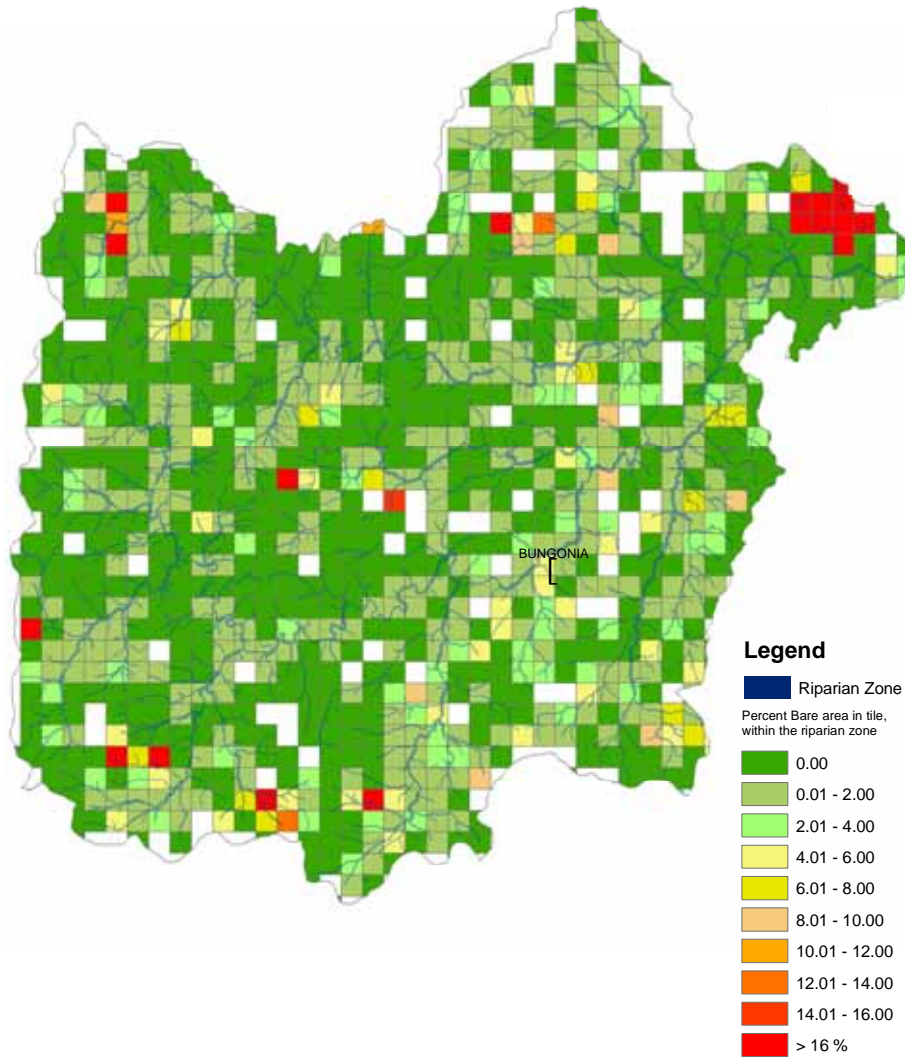


Distribution of mean patch size of *Bare* areas in the riparian zones.



Distribution of the Mean Nearest Neighbour (MNN) distance between *Bare* patches within tiles in the riparian zones.

Bungonia – Bare



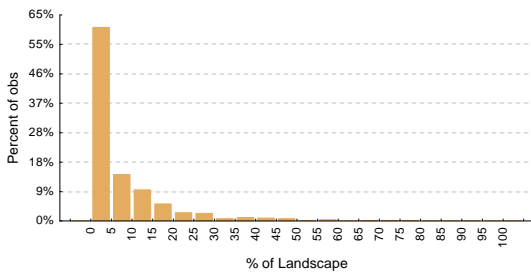
Bare cover map of Bungonia sub-catchment

- Bare areas are distributed throughout the sub-catchment particularly in riparian zones where grazing is the main land use.
- The largest contiguous patches of Bare riparian areas occur in the north eastern corner of the sub-catchment where the land use type is Industry / Intensive Agriculture.

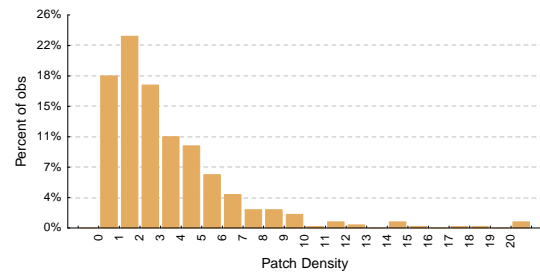
Reporting Card - Almost Bare

Bungonia – Almost Bare

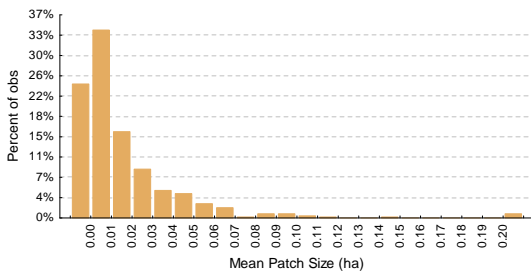
- The % Landscape graph shows that the Almost Bare areas generally do not dominate the riparian area in this sub-catchment. Where the Almost Bare areas are present within tiles, they occupy 5% or less of the riparian zone in approximately 60% of the tiles.
- Almost Bare areas are generally small as indicated by the Mean Patch Size graph.



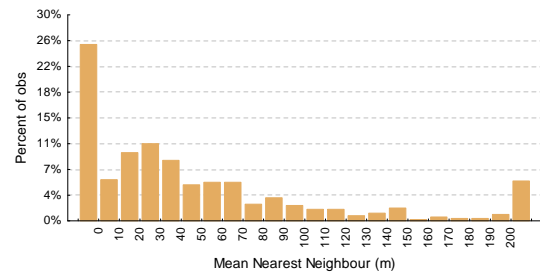
Distribution of the percentage of *Almost bare* area or **Percent of Landscape (PL)** within tiles in the riparian zones.



Distribution of the *Almost Bare* Patch Density (Ha) within tiles in the riparian zones.



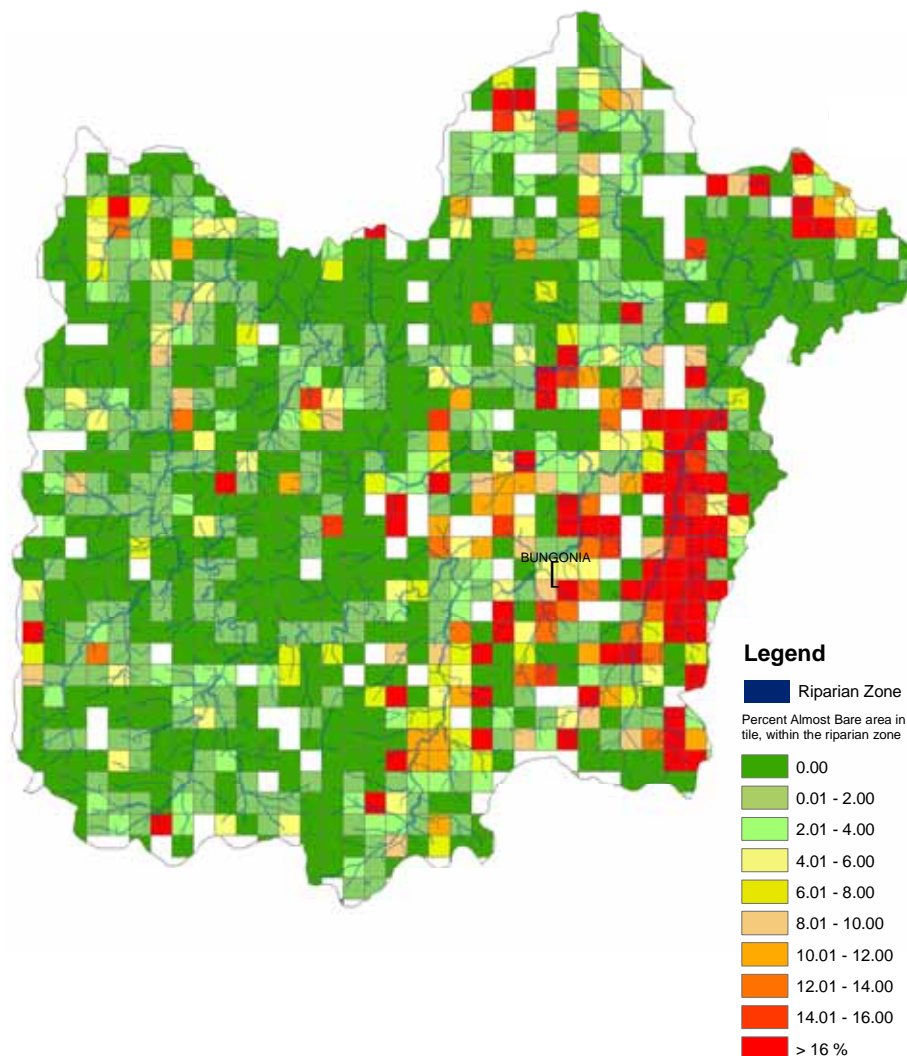
Distribution of mean patch size (Ha) of *Almost Bare* areas in the riparian zones.



Distribution of the Mean Nearest Neighbour (metres) distance between *Almost Bare* patches within tiles in the riparian zones.

Reporting Card - Almost Bare

Bungonia – Almost Bare



Almost Bare cover map of Bungonia sub-catchment

- Almost Bare areas are distributed throughout the sub-catchment particularly in riparian zones where grazing is the main land use.
- The largest contiguous patches of Almost Bare riparian areas occur in the central eastern riparian zones of the sub-catchment to the east of Bungonia.