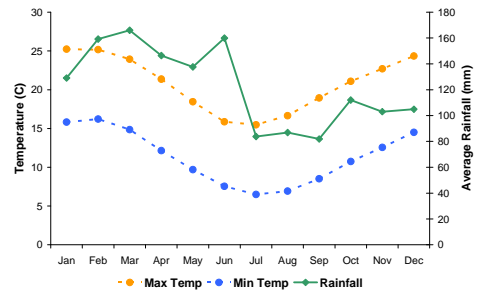


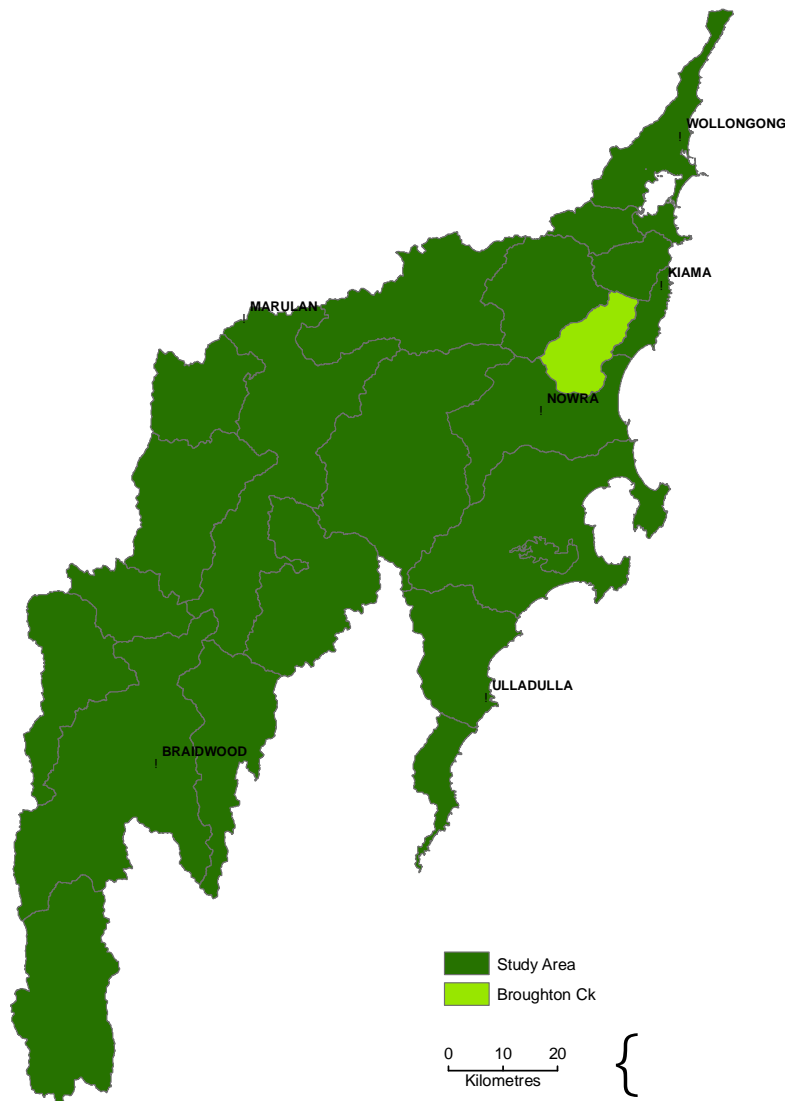
Report Card - Broughton Creek

General Information

Sub-catchment size	181 km ²
Riparian landscape area	10 km ²
Average annual rainfall range	1170-2030 mm
Median annual rainfall	1400 mm
Elevation range	2-660 m
Sub-catchment stream length	689 km
Analysis area stream length	441 km

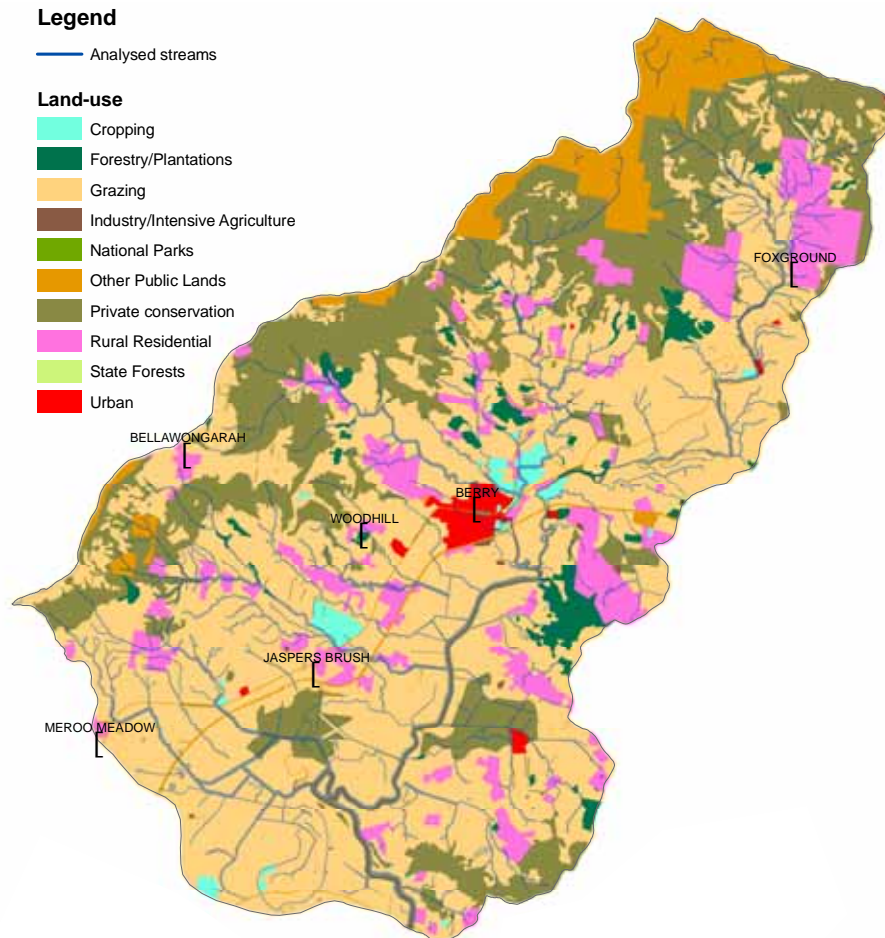


Average daily temperature and monthly rainfall data

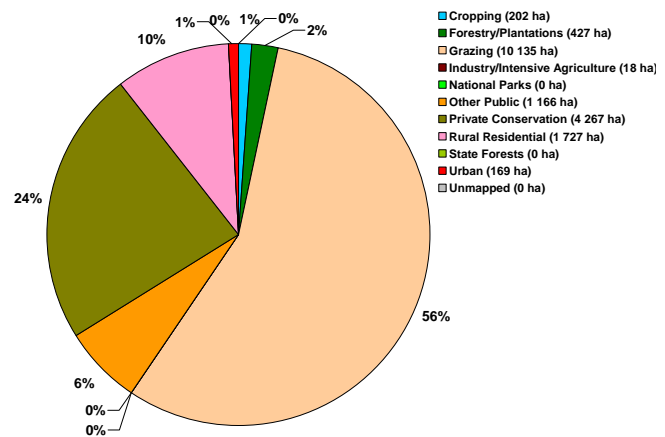


Location of Broughton Creek sub-catchment within study area

Land use



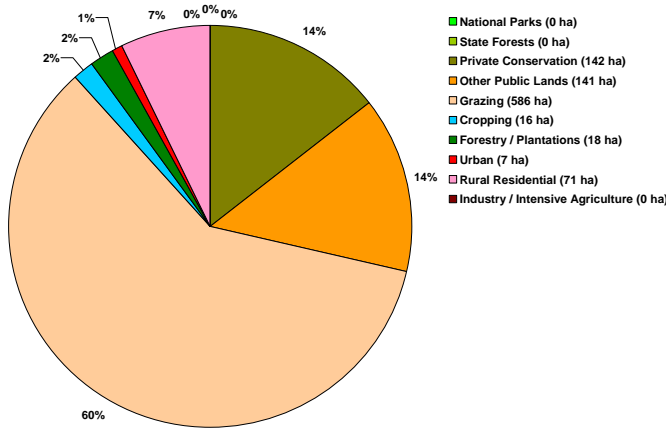
Land use map for Broughton Creek sub-catchment



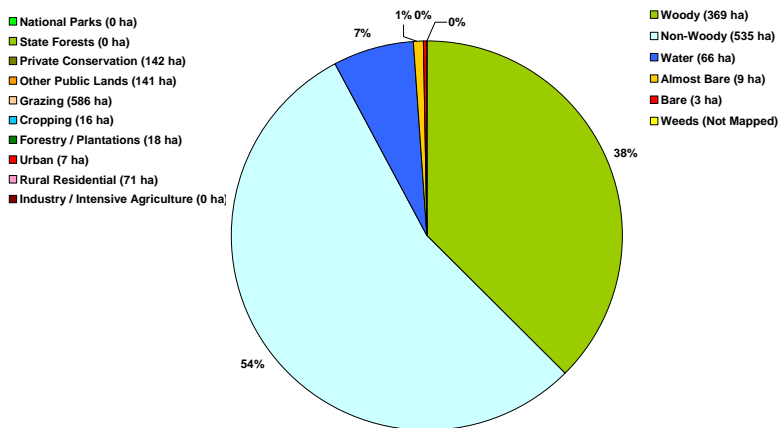
Report Card

Broughton Creek Riparian Zone Summary

- Grazing comprises the largest area within the riparian zone (60%) and, in terms of cover type, Non-woody is the most predominant cover type (54 %) within the riparian zone.
- Grazing and Private Conservation contribute the largest areas of woody riparian cover to the sub-catchment total.
- Bare and Almost Bare compose small proportions of the riparian zone and mostly occur on the Grazing and Other Public Conservation land use types.



Land use within the riparian zone



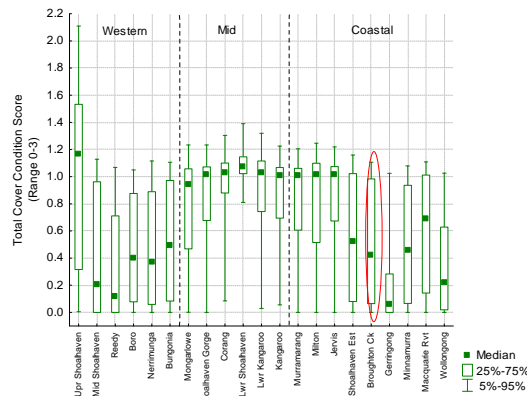
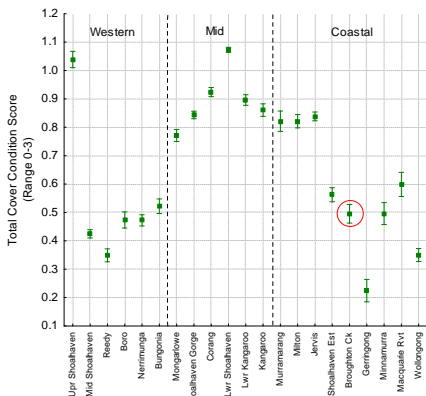
Land cover classes within the riparian zone

Cover Class by land use within the riparian zone

Cover Class	Landuse	Conservation		Other Conservation		Agriculture			Other		
		National Parks	State Forests	Private Conservation	Other Public Lands	Grazing	Cropping	Forestry / Plantations	Urban	Rural Residential	Industry / Intensive Agriculture
Woody	Area (ha)	0.0	0.0	107.3	40.1	158.2	5.9	17.7	2.3	37.7	0.1
	% of Cover Class	0.0%	0.0%	29.1%	10.9%	42.8%	1.6%	4.8%	0.6%	10.2%	0.0%
Non-Woody	Area (ha)	0.0	0.0	32.4	35.0	418.5	10.4	0.6	4.7	33.6	0.1
	% of Cover Class	0.0%	0.0%	6.0%	6.5%	78.2%	1.9%	0.1%	0.9%	6.3%	0.0%
Water	Area (ha)	0.0	0.0	0.2	61.9	3.7	0.1	0.0	0.0	0.0	0.0
	% of Cover Class	0.0%	0.0%	0.3%	94.0%	5.6%	0.1%	0.0%	0.0%	0.0%	0.0%
Almost Bare	Area (ha)	0.0	0.0	1.9	3.0	3.9	0.0	0.0	0.0	0.1	0.0
	% of Cover Class	0.0%	0.0%	21.0%	33.4%	43.2%	0.5%	0.1%	0.5%	1.4%	0.0%
Bare	Area (ha)	0.0	0.0	0.0	0.5	2.2	0.1	0.0	0.1	0.1	0.0
	% of Cover Class	0.0%	0.0%	1.0%	16.2%	75.1%	1.8%	0.0%	2.7%	2.1%	1.1%
Weeds	Area (ha)	N/A	N/A	N/A	N/A	N/A	N/A	N/A	N/A	N/A	N/A
	% of Cover Class	N/A	N/A	N/A	N/A	N/A	N/A	N/A	N/A	N/A	N/A

Reporting Card - Woody cover

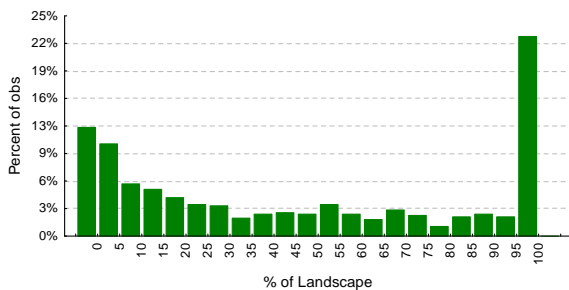
Broughton Creek – Woody Cover



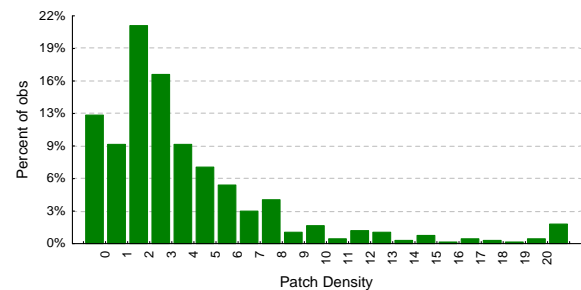
Overall Rank: 18/21
Zonal Rank: 6/9
(Ranks area based on Sub-catchment Woody Cover Score)

Comparison of mean and median woody cover scores across study area.

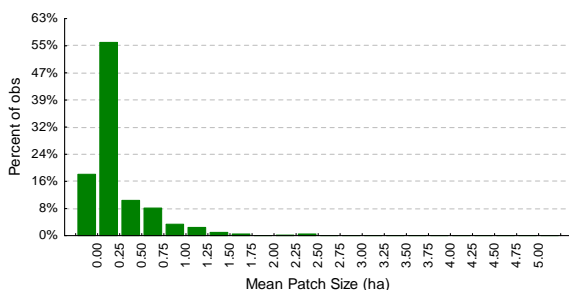
- The riparian zone in approximately 31% of the sub-catchment tiles, where woody vegetation cover is present, consists of between 50 and 100% woody cover, i.e. woody cover is very dominant in the riparian zones of these tiles. However, woody riparian cover is much less dominant in 35% of the sub-catchment tiles, where it consists of 20 % or less of the riparian area within a tile.
- The Patch Density graph indicates moderate fragmentation while the low values in of the Mean Patch Size graph indicate a graininess of the woody riparian cover in the sub-catchment.



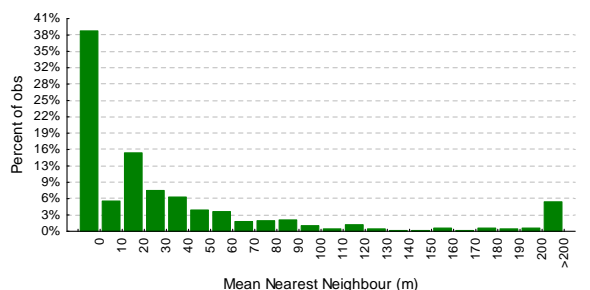
Distribution of the percentage of woody vegetation or **Percent of Landscape (PL)** within tiles in the riparian zones of the sub-catchment.



Distribution of the woody vegetation Patch Density (ha) within tiles in the riparian zones.

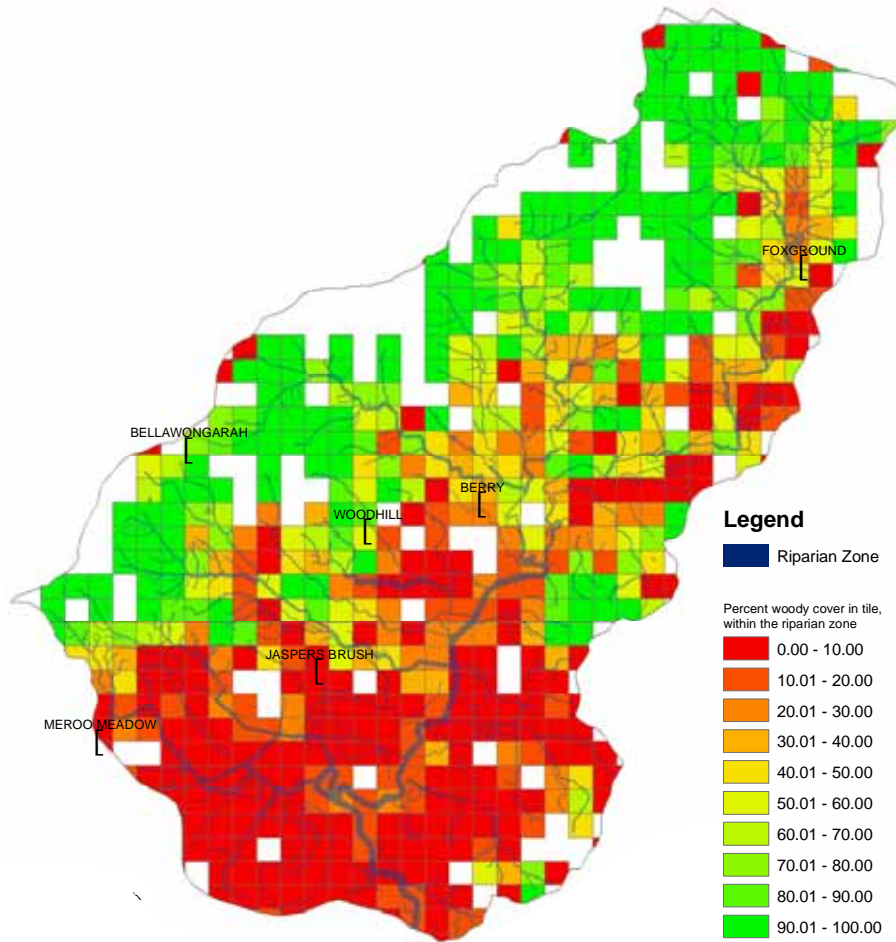


Distribution of mean patch size (ha) of woody vegetation in the riparian zones.



Distribution of the Mean Nearest Neighbour (Metres) distance between woody vegetation patches within tiles in the riparian zones.

Reporting Card - Woody cover



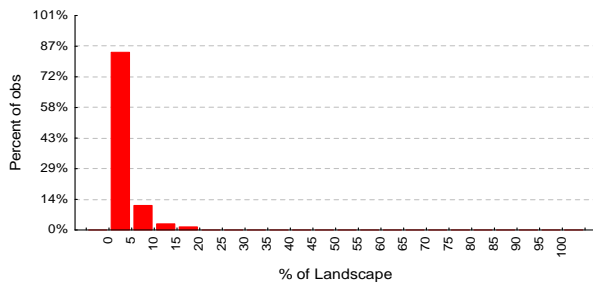
•

Woody cover map of Broughton Creek sub-catchment

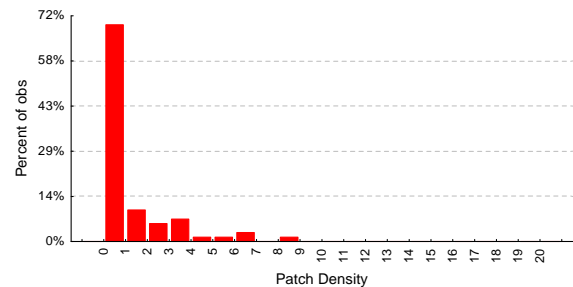
- Woody riparian cover is fragmented and less dominant in the southern and eastern parts of the sub-catchment. Grazing is the predominant land use in these parts of the sub-catchment.
- Woody riparian cover is more dominant and intact on riparian zones to the west and north of the sub-catchment.

Broughton Creek – Bare

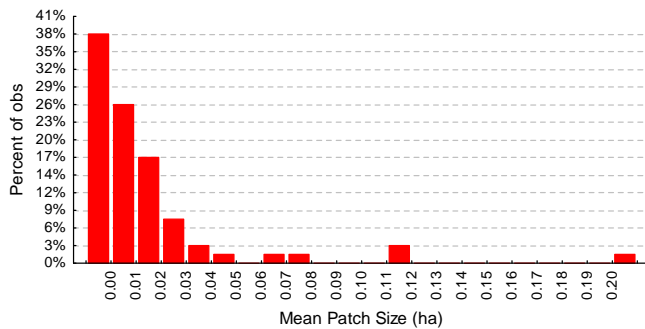
- The **% Landscape** graph shows that Bare areas generally do not dominate the riparian area in this sub-catchment. Where the Bare areas are present within tiles, they occupy 5% or less of the riparian zone in approximately 85% of the tiles.
- Bare areas are generally small as indicated by the Mean Patch Size graph.



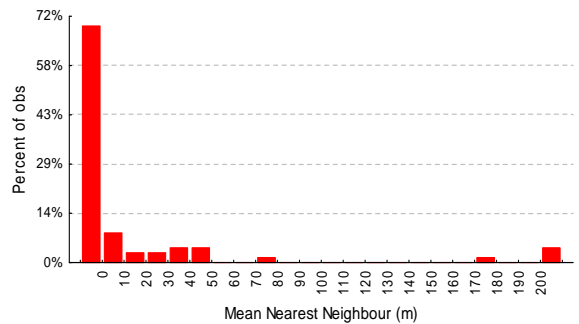
Distribution of the percentage of Bare area or Percent of Landscape (PL) within tiles in the riparian zones.



Distribution of the Bare Patch Density (PD) within tiles in the riparian zones.

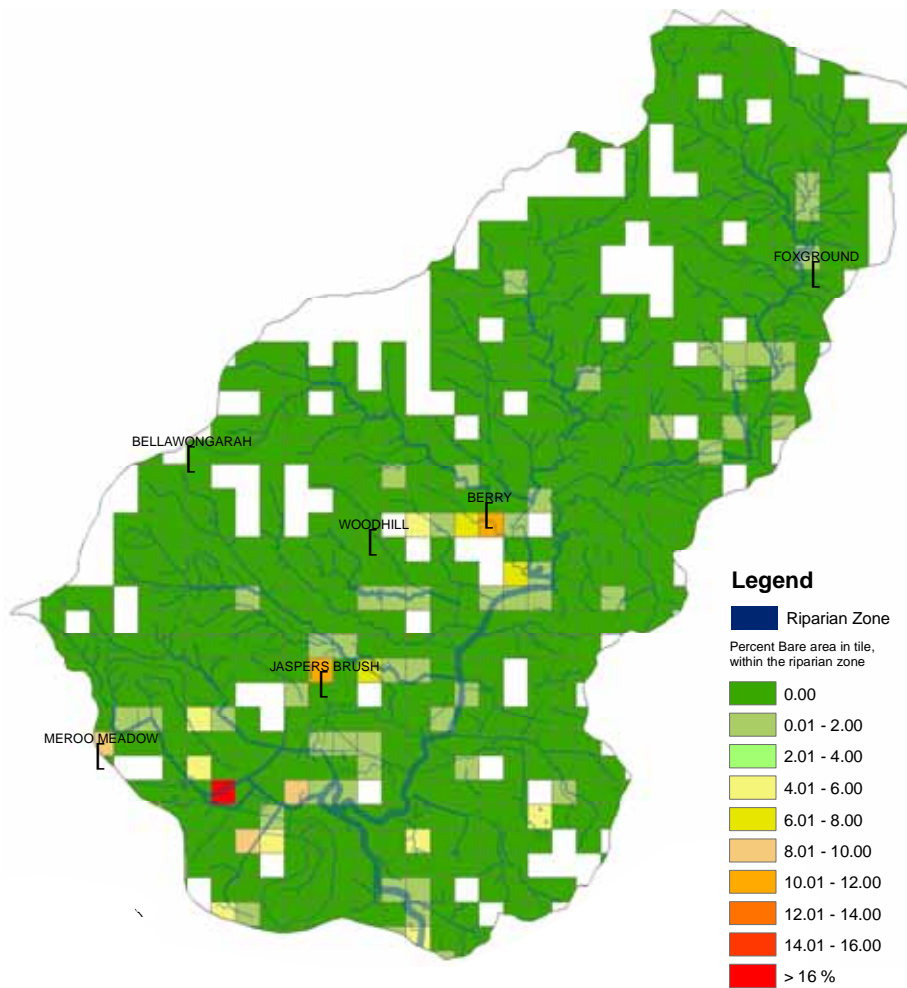


Distribution of mean patch size of Bare areas in the riparian zones.



Distribution of the Mean Nearest Neighbour (MNN) distance between Bare patches within tiles in the riparian zones.

Broughton Creek – Bare



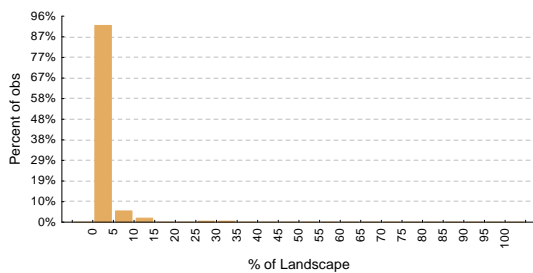
Bare cover map of Broughton Creek sub-catchment

- Bare areas are not prevalent within this sub-catchment and, where they are present the Bare areas generally compose a small proportion of the riparian zone within a tile.

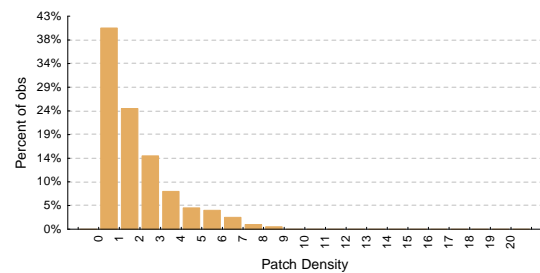
Reporting Card - Almost Bare

Broughton Creek – Almost Bare

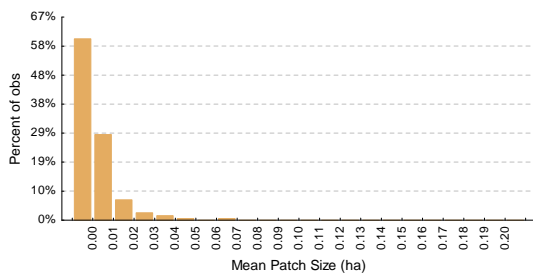
- The **% Landscape** graph shows that Almost Bare areas generally do not dominate the riparian area in this sub-catchment. Where the Bare areas are present within tiles, they occupy 5% or less of the riparian zone in approximately 90% of the tiles.
- Almost Bare areas are generally small as indicated by the Mean Patch Size graph.



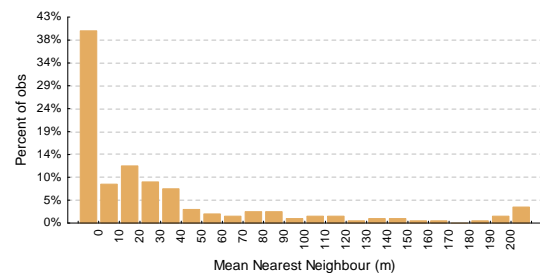
Distribution of the percentage of *Almost bare* area or **Percent of Landscape (PL)** within tiles in the riparian zones.



Distribution of the *Almost Bare* Patch Density (Ha) within tiles in the riparian zones.



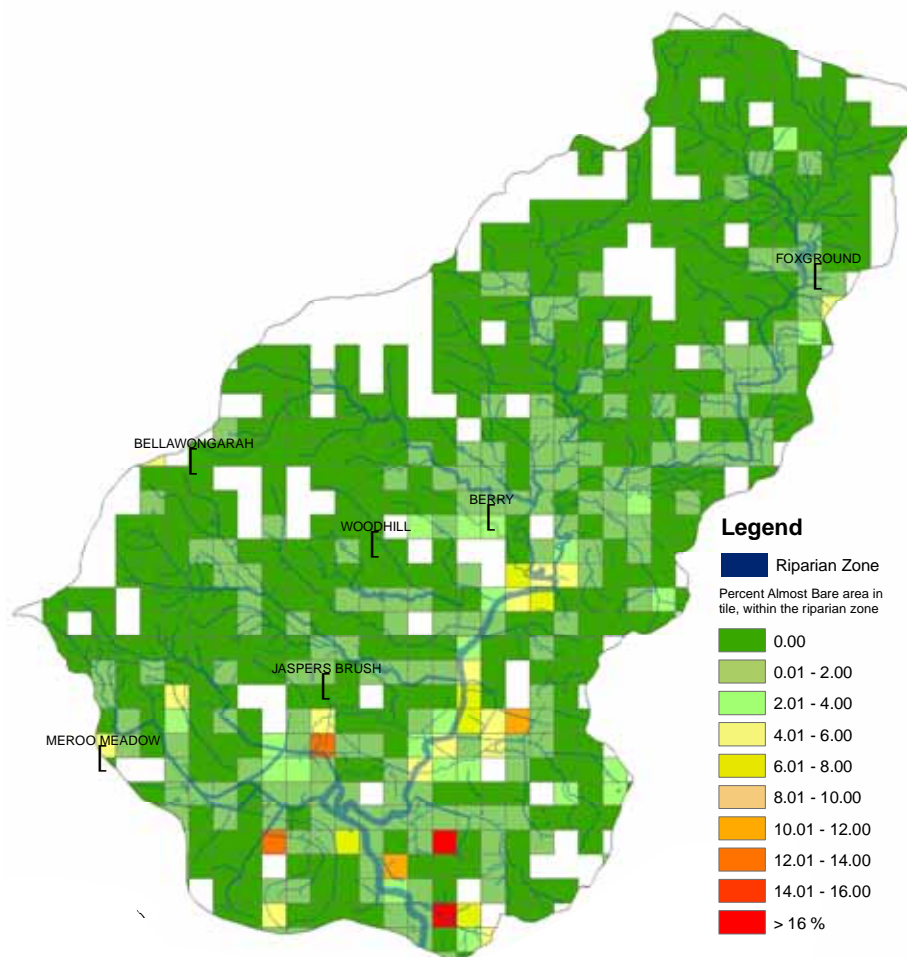
Distribution of mean patch size (Ha) of *Almost Bare* areas in the riparian zones.



Distribution of the Mean Nearest Neighbour (metres) distance between *Almost Bare* patches within tiles in the riparian zones.

Reporting Card - Almost Bare

Broughton Creek – Almost Bare



Almost Bare cover map of Broughton Creek sub-catchment

- Almost Bare areas are not prevalent within this sub-catchment and, where they are present the Almost Bare areas generally compose a small proportion of the riparian zone within a tile.