



Critical water planning for the Murrumbidgee Valley

Issue 22 | 16 March 2009

CURRENT WATER AVAILABILITY

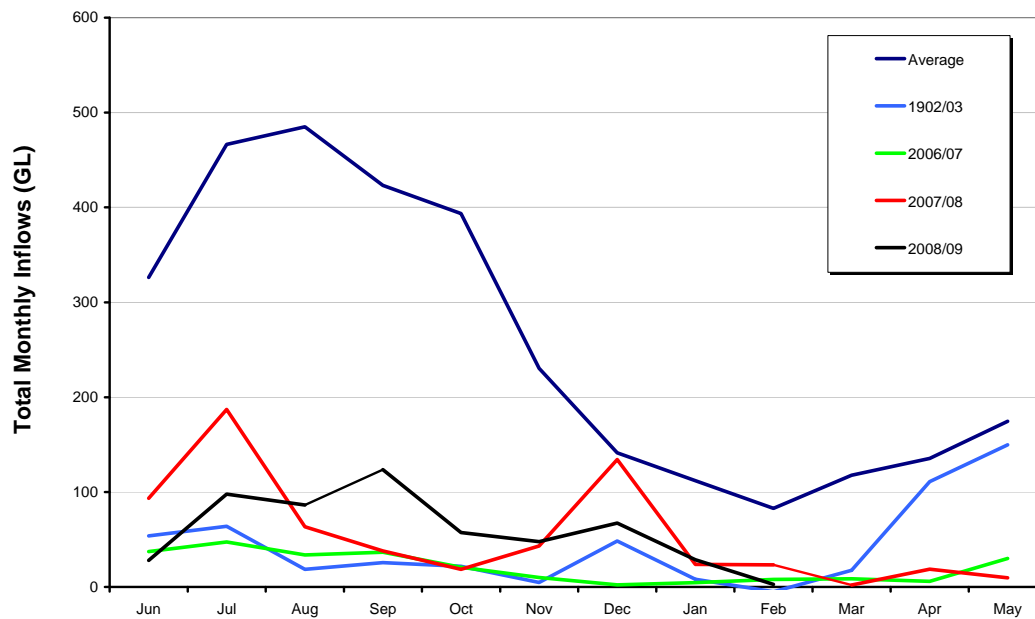
Rainfall across the Murrumbidgee Valley over the past month has been very light and patchy, with little useful inflow occurring. Thredbo village received 32.5 millimetres (mm) of rain Gundagai received 10.2 mm, Griffith 21.6 mm and Hay 12.8 mm respectively.

The following table shows Murrumbidgee Valley storage levels as at 11 March 2009.

Storage @ 11 March 2009	Volume (GL)	Percent of capacity	Change in Volume 12 February to 11 March 2009 (GL)	Volume at this time last year.
Burrinjuck Dam	510	50	-21	428
Blowering Dam	506	30	-92	471
Total	1016			899

INFLOW GRAPH

Total Murrumbidgee Valley System Natural Inflows (excluding Snowy)
Selected Drought Years-v-Long term average



Inflows into the Murrumbidgee Valley's storages are now at a point that is worse than in 2006/07.

WHAT THIS MEANS

Water availability to users in the Murrumbidgee remains well below the average with a substantial autumn break required to ensure that there is enough water available to supply carryover and conveyance can be delivered on 1 July 2009.

There is enough water reserved to meet all critical human needs; that is to provide restricted town water in the Murrumbidgee valley and to supply a small amount of water to Murrumbidgee and Coleambally Irrigation to provide basic stock and domestic supply.

There is currently enough water to supply a portion of carryover on 1 July 2009. All future inflows will now be reserved until carryover can be fully delivered.

CARRYOVER RULES

While the Murrumbidgee Water Sharing Plan remains suspended, high and general security licences will be permitted to carryover a maximum of 30 per cent of entitlement.

Accounts will be limited to 95 per cent (including carryover + allocation) of entitlement for high security entitlement holders, until the general security allocation exceeds 95 per cent.

Water will be carried over automatically at the end of the water year; there is no need to complete any paperwork. Account balance information can be obtained from State Water Customer Service Officers.

Town water supply and stock and domestic supply cannot be carried over.

All licence holders should be aware that if the Water Sharing Plan is recommenced, then the rules in the Plan will apply.

TRADE

All water in accounts is tradeable. However, all trades (including interstate trades) must be received by State Water by 31 May 2009.

TOWN WATER SUPPLY IN 2008/09

Town water allocations remain at 95 per cent of entitlement and water to meet critical human needs for 2009/10 has been reserved. Town water supply authorities are responsible for managing water restrictions within their licensed entitlement.

Councils and town water supply authorities are reminded that the drought is far from over and that they should remain conservative with all water use. Without significant improvement in water availability, councils and town water supply authorities should be prepared to commence July 1 at Level 4 water restrictions (no outside water use).

COMPLIANCE

The Department of Water and Energy's Drought Contingency Planning Program will only work if everyone adheres to the restrictions and is careful with **all** water use. To ensure that the system is run fairly, the community should report any suspected breaches to the Department's Compliance Unit via phone 1800 633 362 or by email to watercompliance@dwe.nsw.gov.au. All reports are confidential.

WATER AVAILABILITY OUTLOOK

The following table shows the indicative probabilities as of 11 March 2009 of water availability if record low inflows continue.

Date	Critical human needs	Delivery of Carryover	50% High Security Allocation	95% High Security Allocation
1 July	100%	65%	35%	25%
1 August	100%	75%	60%	40%
1 September	100%	90%	80%	65%

This includes minimal conveyance for Murrumbidgee Irrigation and Coleambally Irrigation Limited

Total carryover from last year estimated to be approximately 250 GL

Yanco creek requirements met (65 GL)

End of System commitments met (91GL)

Contact: Bunty Driver 03 5898 3900